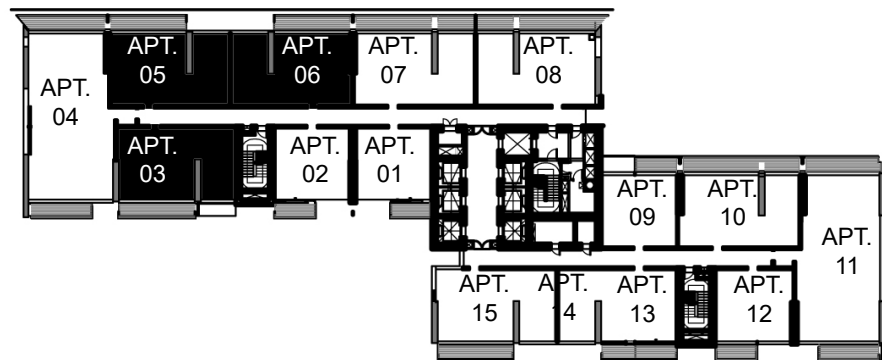
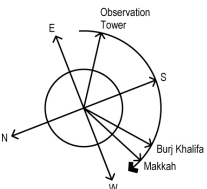
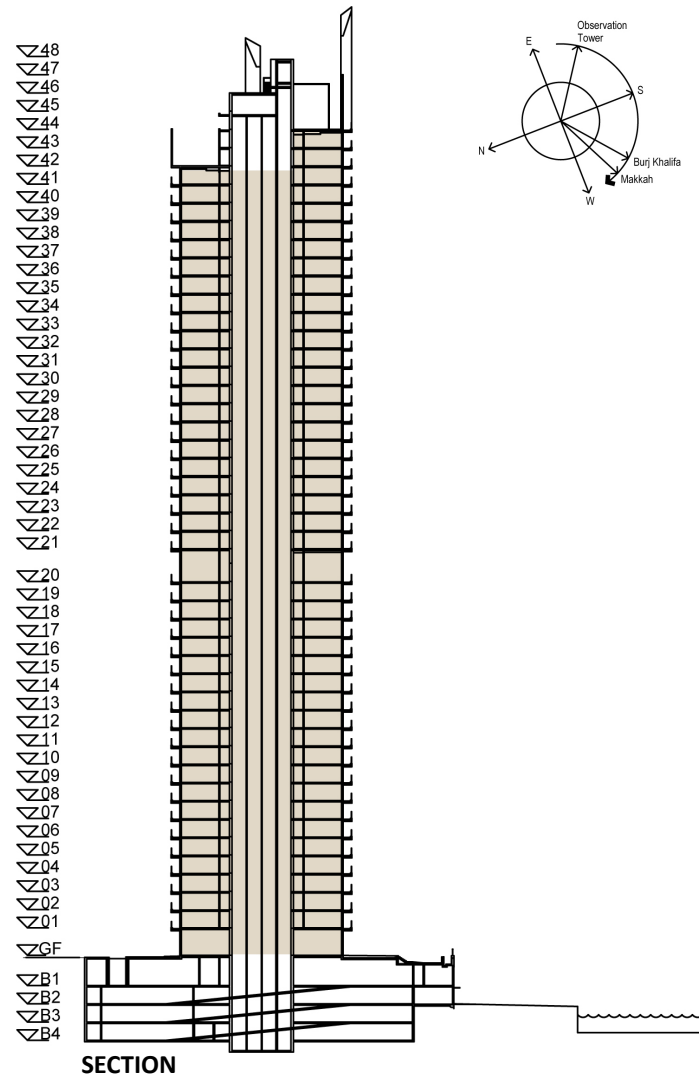


PALACE RESIDENCES DUBAI CREEK HARBOUR

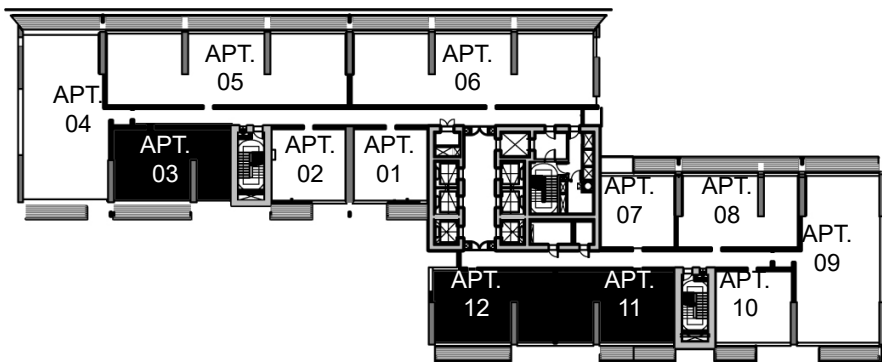
2 BEDROOM - TYPE A

LEVEL 1 TO 43

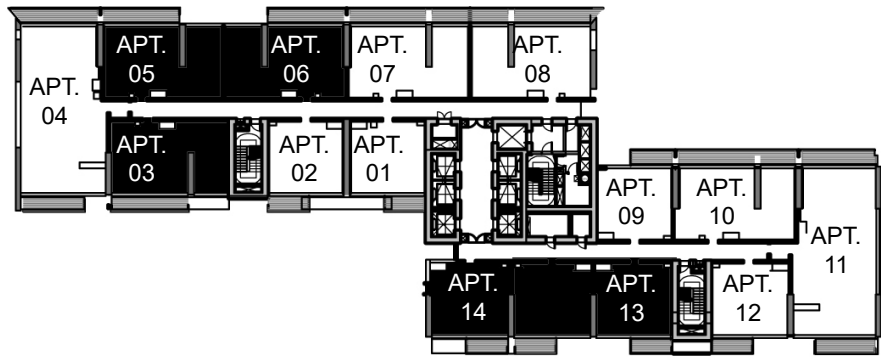
LEVEL	UNIT NO	UNIT AREA		BALCONY AREA		TOTAL AREA	
		SQM.	SQFT.	SQM.	SQFT.	SQM.	SQFT.
TYPICAL 1-19	UNIT 03	88.39	951.42	13.77	148.22	102.16	1099.64
	UNIT 05	87.74	944.43	13.84	148.97	101.58	1093.40
	UNIT 06	88.56	953.25	13.84	148.97	102.40	1102.22
TYPICAL 21-39	UNIT 03	88.39	951.42	13.77	148.22	102.16	1099.64
	UNIT 05	87.74	944.43	13.84	148.97	101.58	1093.40
	UNIT 06	88.56	953.25	13.84	148.97	102.40	1102.22
	UNIT 13	88.30	950.45	13.43	144.56	101.73	1095.01
TYPICAL 40-41	UNIT 14	88.86	956.48	13.43	144.56	102.29	1101.04
	UNIT 03	88.39	951.42	13.66	147.04	102.05	1098.46
	UNIT 11	88.30	950.45	13.43	144.56	101.73	1095.01
TYPICAL 42-43	UNIT 12	88.86	956.48	13.43	144.56	102.29	1101.04
	UNIT 03	88.39	951.42	13.66	147.04	102.05	1098.46



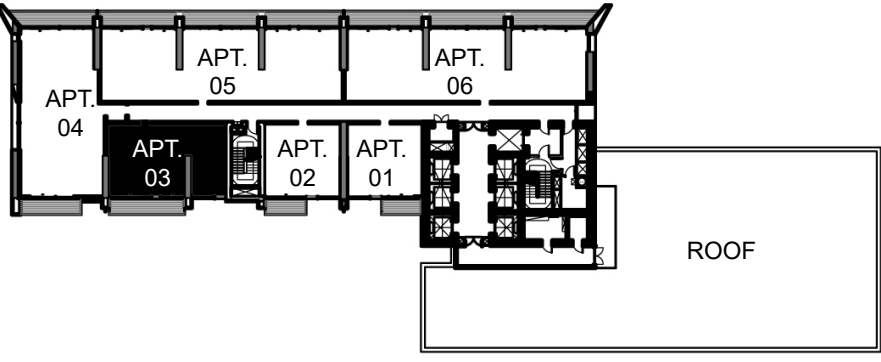
KEY PLAN 1-19



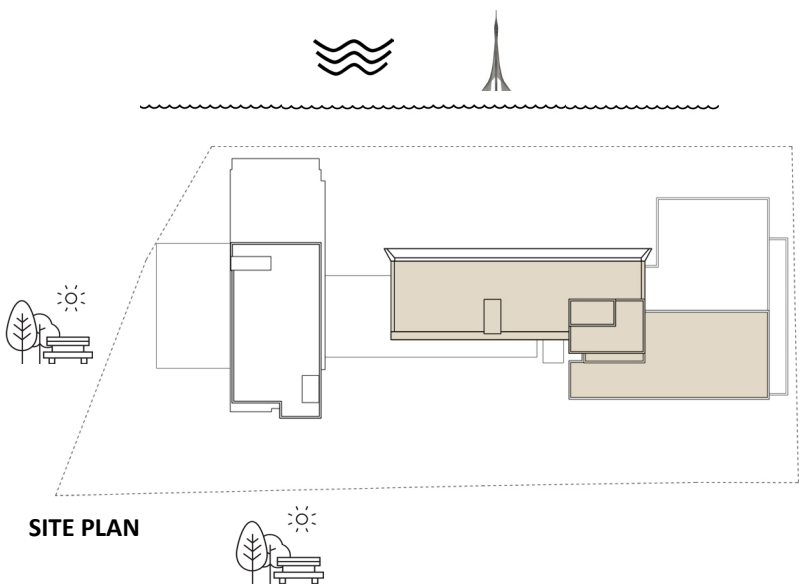
KEY PLAN 40-41



KEY PLAN 21-39



KEY PLAN 42-43



FLOOR PLAN 1. All dimensions are in imperial and metric, and measured from finish to finish excluding construction tolerances. 2. All materials, dimensions, and drawings are approximate only. 3. Information is subject to change without notice, at developer's absolute discretion. 4. Actual area may vary from the stated area. 5. Drawings not to scale. 6. All images used are for illustrative purposes only and do not represent the actual size, features, specifications, fittings, and furnishings. 7. The developer reserves the right to make revisions / alterations, at it's absolute discretion, without any liability whatsoever.