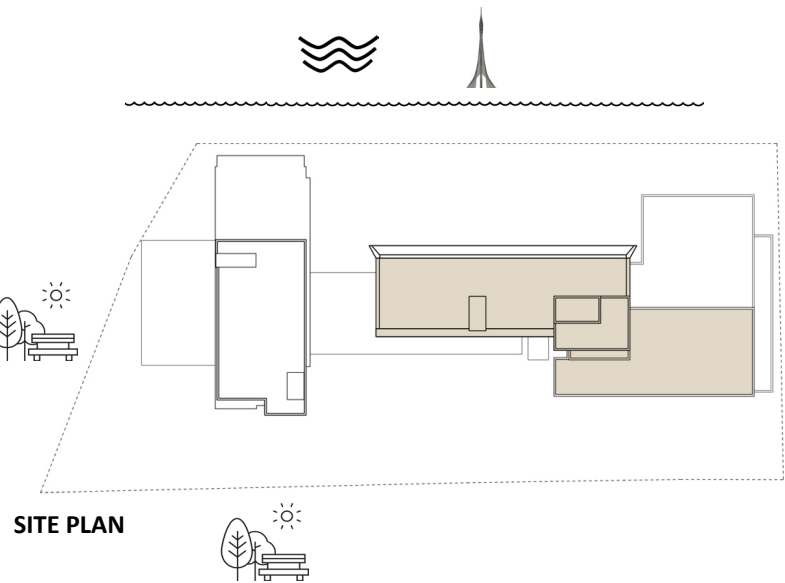
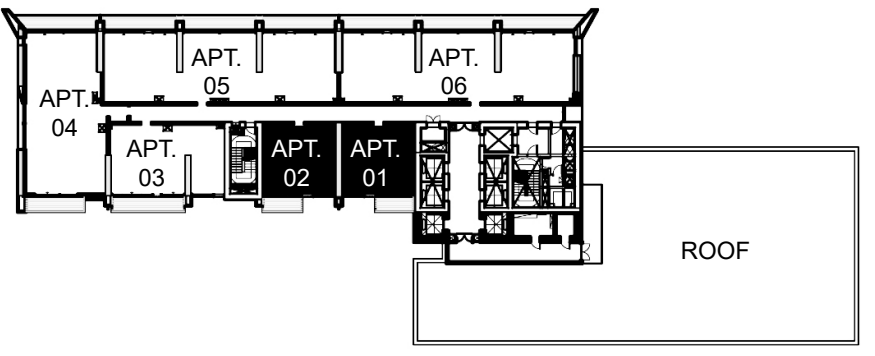
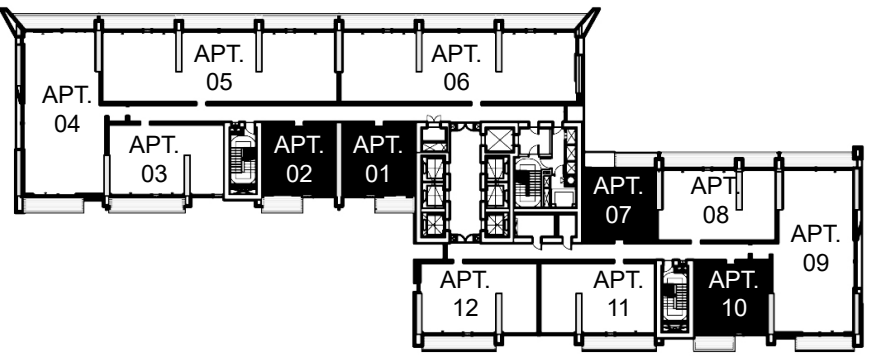
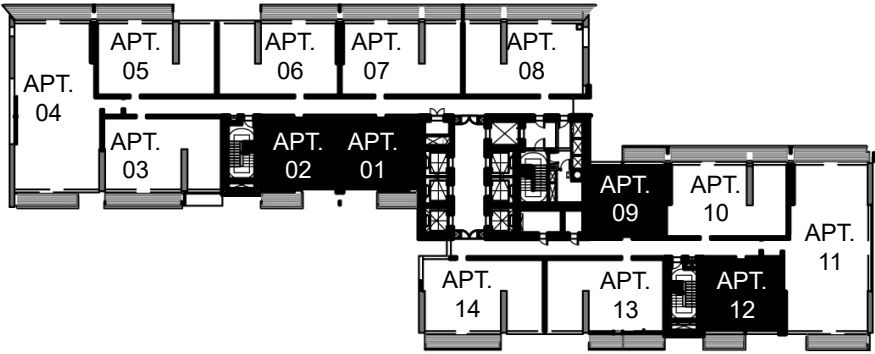
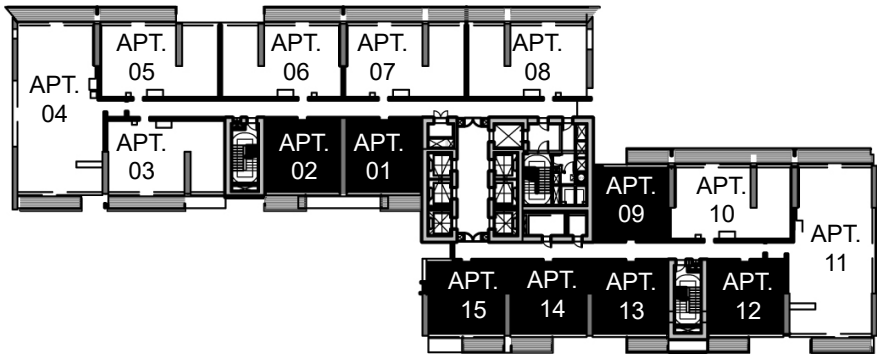
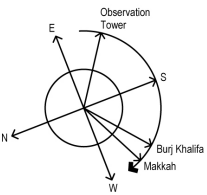
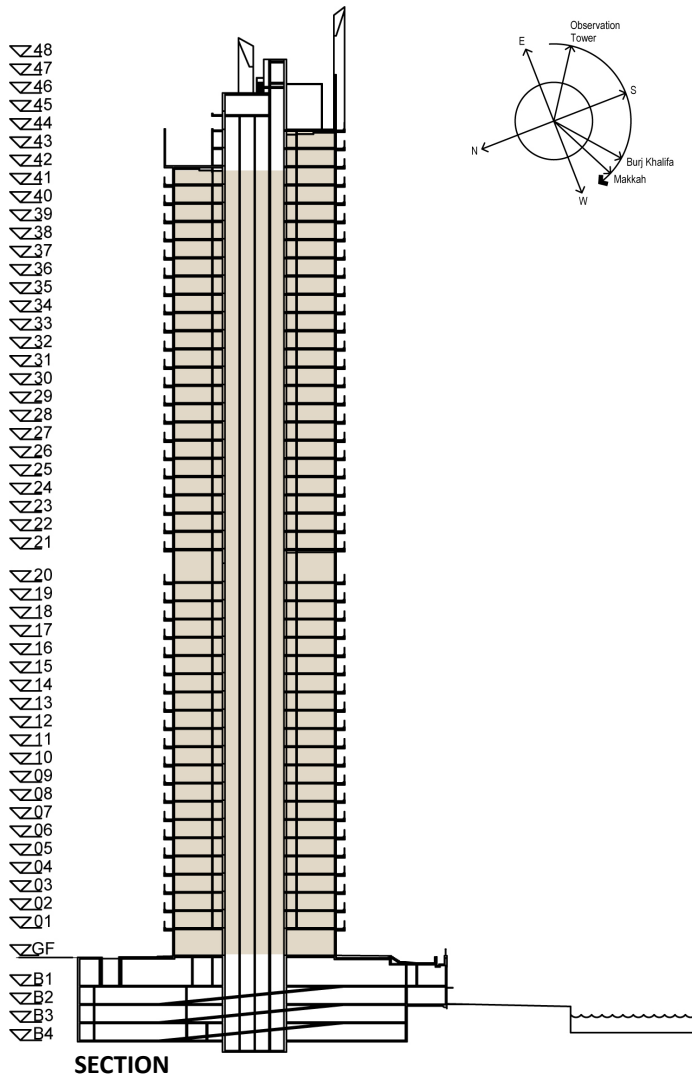


PALACE RESIDENCES DUBAI CREEK HARBOUR

I BEDROOM

LEVEL I TO 43

LEVEL	UNIT NO	UNIT AREA		BALCONY AREA		TOTAL AREA	
		SQM.	SQFT.	SQM.	SQFT.	SQM.	SQFT.
TYPICAL 1-19	UNIT 01	57.59	619.89	7.08	76.21	64.67	696.10
	UNIT 02	57.53	619.25	7.52	80.94	65.05	700.19
	UNIT 09	56.87	612.14	7.81	84.07	64.68	696.21
	UNIT 12	57.91	623.34	7.57	81.48	65.48	704.82
	UNIT 13	57.75	621.62	7.59	81.70	65.34	703.32
	UNIT 14	58.22	626.67	7.59	81.70	65.81	708.37
TYPICAL 21-39	UNIT 01	57.59	619.89	7.08	76.21	64.67	696.10
	UNIT 02	57.53	619.25	7.52	80.94	65.05	700.19
	UNIT 09	56.87	612.14	7.81	84.07	64.68	696.21
	UNIT 12	57.92	623.45	7.57	81.48	65.49	704.93
TYPICAL 40-41	UNIT 01	57.59	619.89	7.08	76.21	64.67	696.10
	UNIT 02	57.53	619.25	7.52	80.94	65.05	700.19
	UNIT 07	56.87	612.14	7.81	84.07	64.68	696.21
	UNIT 10	57.92	623.45	7.57	81.48	65.49	704.93
TYPICAL 42-43	UNIT 01	57.59	619.89	7.08	76.21	64.67	696.10
	UNIT 02	57.53	619.25	7.52	80.94	65.05	700.19



FLOOR PLAN 1. All dimensions are in imperial and metric, and measured from finish to finish excluding construction tolerances. 2. All materials, dimensions, and drawings are approximate only. 3. Information is subject to change without notice, at developer's absolute discretion. 4. Actual area may vary from the stated area. 5. Drawings not to scale. 6. All images used are for illustrative purposes only and do not represent the actual size, features, specifications, fittings, and furnishings. 7. The developer reserves the right to make revisions / alterations, at it's absolute discretion, without any liability whatsoever.