



# DAR AL ARKAN



DUBAI  
DOWNTOWN  
THE RESIDENCES

DAR AL ARKAN

ARE **YOU READY**

Betterhomes.



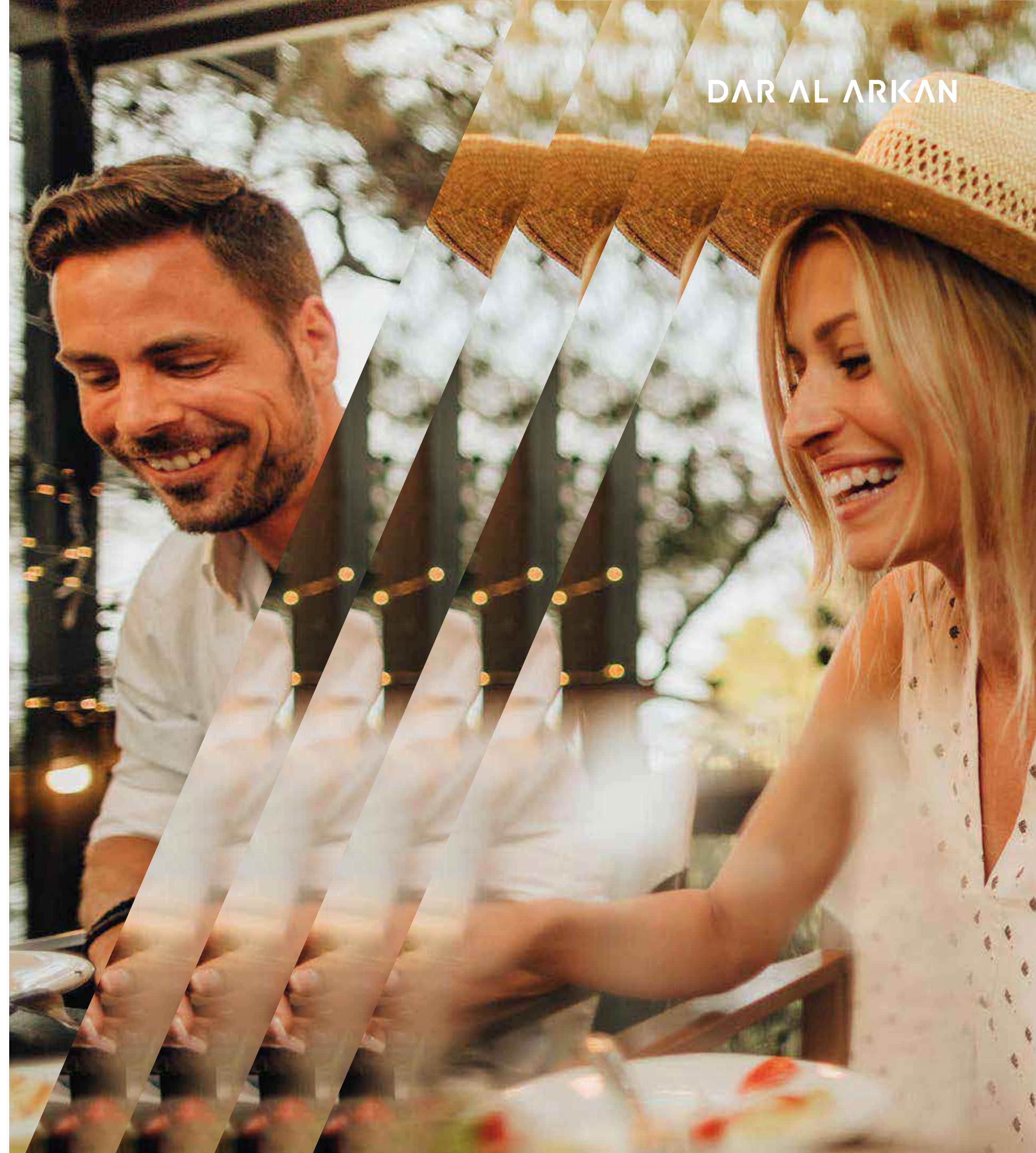
DAR AL ARKAN

# TO **MULTIPLY**

**YOUR  
LIVING EXPERIENCE**

Betterhomes.

DAR AL ARKAN





DAR AL ARKAN

TIMES  
**INFINITY?**

Betterhomes.

WELCOME  
TO YOUR  
HOME  
AT THE  
W RESIDENCES  
DUBAI -  
DOWNTOWN

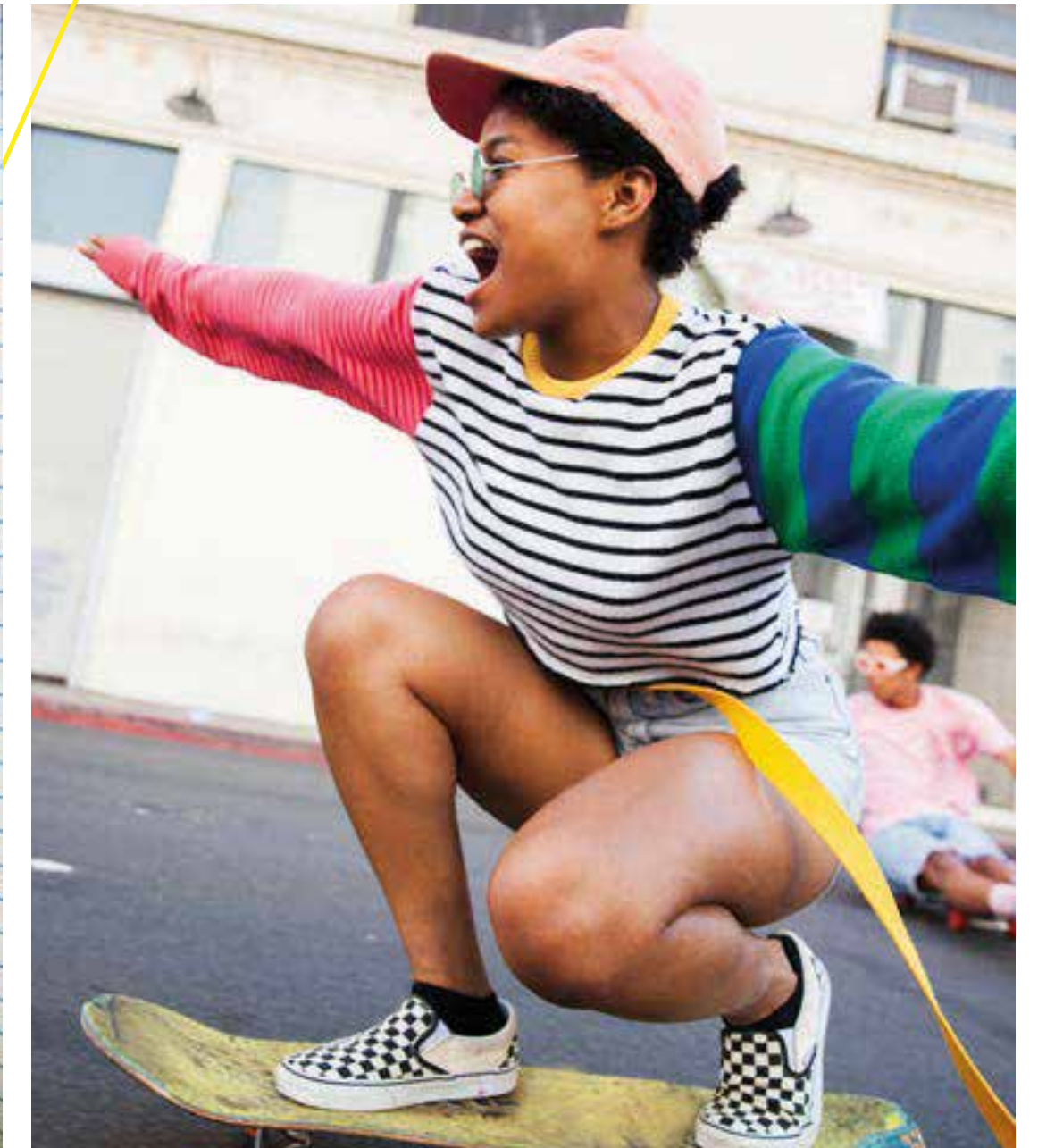
DAR AL ARKAN





# BOLD ATTITUDE

Born from the bold attitude and 24/7 culture of New York City, W Hotels has disrupted and redefined the hospitality scene for over two decades. Trailblazing its way around the globe, W Hotels is defying expectations and breaking the norms of traditional luxury wherever the iconic W sign lands.





DAR AL ARKAN

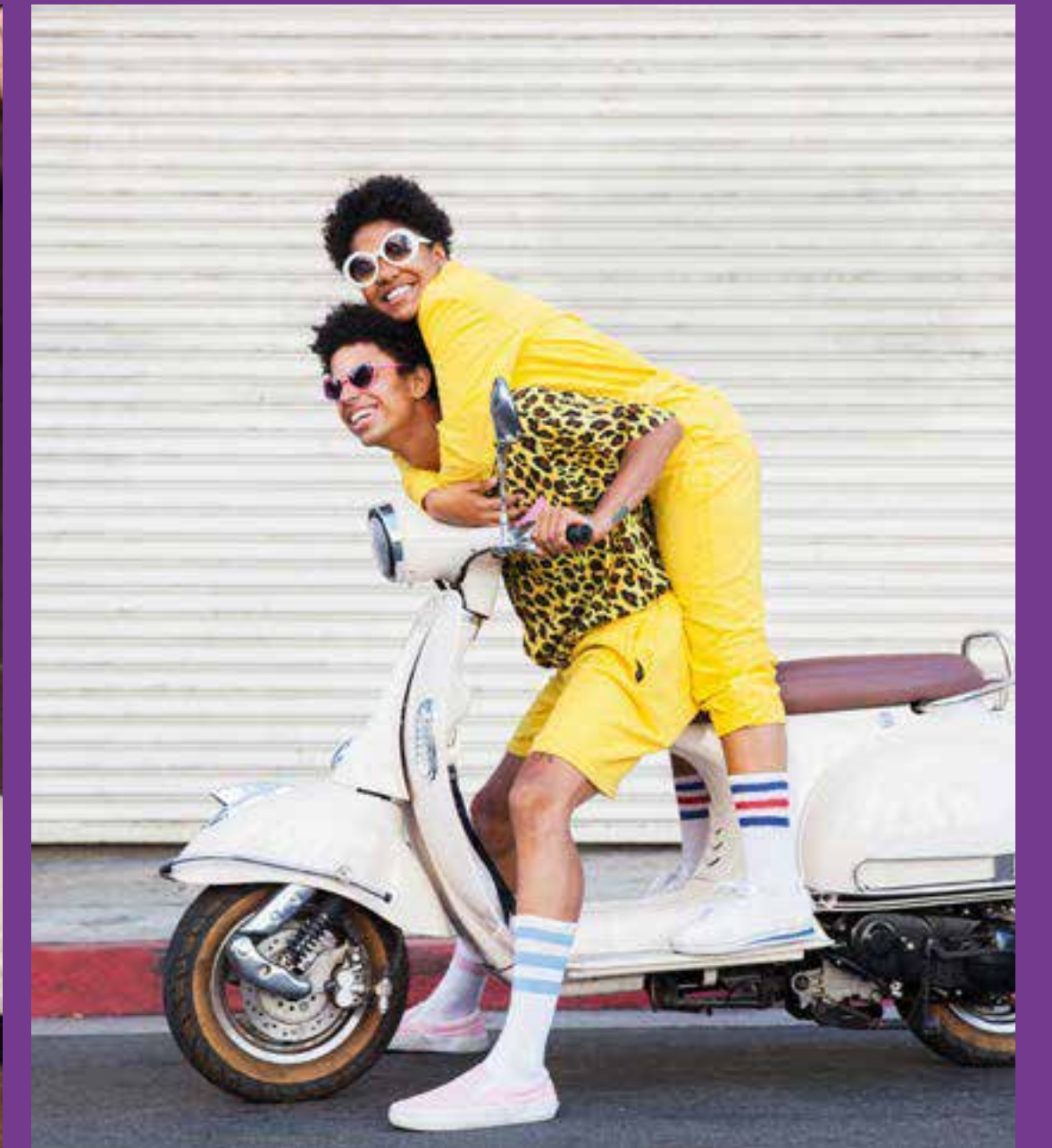


# WHATEVER/ WHENEVER<sup>®</sup>

Disruption is at the core of W Hotels' DNA. It embodies the antithesis of the traditional, the answer to the next generation of affluent consumers. By stimulating creative collisions through Design, Music and Fashion, W Hotels sets a new standard for extraordinary hotel living.

# CITIZENS OF THE WORLD

As a fluent interpreter of cultural shifts and social trends, W Hotels blends its witty personality with local flair and atmosphere, creating once-in-a-lifetime experiences for its residents and guests.





## DAR AL ARKAN

# SOLID GROUND

Dar Al Arkan landed the lead role in the real estate universe thanks to 27 years of accomplishments. World-class architects, top-quality materials, management and maintenance, successful collaborations have built a steady trust among the most affluent clients.

# FRACTAL BEAUTY

The sophisticated architecture recalls the beat of a vibrant city that never stops, but also the perfect geometries of nature. A vertical bloom of 49 floors, made of 384 exquisitely crafted residences, that dialogues harmonically with the solid concrete base.



DAR AL ARKAN



Betterhomes

# IN THE HEART OF DOWNTOWN DUBAI

W Residences Dubai – Downtown is situated in the spotlight of the city's vibrant life. The Burj Khalifa is just outside the window, the Dubai Mall and the Dancing Fountains are only a few steps away. Elegant streets, majestic buildings, chic leisure points, the most exclusive venues: it all happens here.



Betterhomes.

DAR AL ARKAN

WHERE  
IT ALL  
HAPPENS



# LOCATION



DUBAI  
DOWNTOWN  
THE RESIDENCES

DUBAI CANAL

DUBAI OPERA

DUBAI FOUNTAIN

SOUK AL BAHAR

BURJ KHALIFA

DUBAI MALL

5 MINUTES

**BURJ KHALIFA**

4 MINUTES

**THE DUBAI FOUNTAIN**

3 MINUTES

**THE DUBAI CANAL**

6 MINUTES

**THE DUBAI MALL**

6 MINUTES

**THE DUBAI OPERA**





# VERY FIRST SIGHT

Curved, floor-to-ceiling glass facades offer exceptional open views over the city, a breathtaking panorama dedicated to an exclusive elite. Not just today, but forever. Because the tower orientation is carefully planned to mitigate being blocked from facing towers in the future.



# UNCONVENTIONAL. UPSCALE. UNMISSABLE.

Step in a world of rebel luxury, iconic design, sophisticated materials, tactile pleasure. The experience begins in the W Lounge, where a sophisticated and stylish atmosphere awakens your senses.

Enter one of the exclusive 384 residences and start feeling at home from the very first moment. Floor to ceiling glass facades and staggered balconies allow plenty of sunlight in every room, while accent wallpapers underline their vibrant personality.







# WORLD- CLASS AMENITIES

W Residences Dubai – Downtown offers superlative amenities dedicated to residents and their guests, turning every moment into a truly memorable experience.

- The Clubhouse: a VIP lounge where new connections spark in front of a signature cocktail or a gourmet lunch
- Advance fitness center
- Media Room with a private cinema, gaming room and a chill area
- Board Room offering refined meeting rooms and a co-working space
- Infinity pool overlooking Burj Khalifa
- Extensive terraces with lounge and seating areas
- Walking track through a lush landscape
- Guest Suites upon request
- “Platinum Elite” status in Marriott Bonvoy for two years





# DETOX. RETOX.REPEAT.

The secret of success lies in a healthy and active lifestyle. At The Residences, residents can recharge themselves in the futuristic fitness center, where they will find the most advanced equipment and plenty of space to workout, play and meditate.

# INSIDER ACCESS

Inside The Residences, residents and guests are granted the exclusive access to the Clubhouse: a VIP lounge where new connections spark in front of a signature cocktail or a gourmet lunch.



# SPACE FOR IDEAS

The common areas are designed to fuel relations, creativity and leisure.

In the Media Room, residents can unwind in the private cinema, the gaming room and the chill area. The Board Room offers refined meeting rooms and a co-working space, to meet any business need.





# LIVE ABOVE DREAMS

Living at the top is not a metaphor here. Discover the colossal rooftop that dominates the city, the ideal place to watch the fireworks over Burj Khalifa on New Year's Eve, with a stunning 360° view of the city.

Dive into the 60 meters wide pool of the podium, enjoy a light snack and let yourself be pampered.



Betterhomes.

DAR AL ARKAN





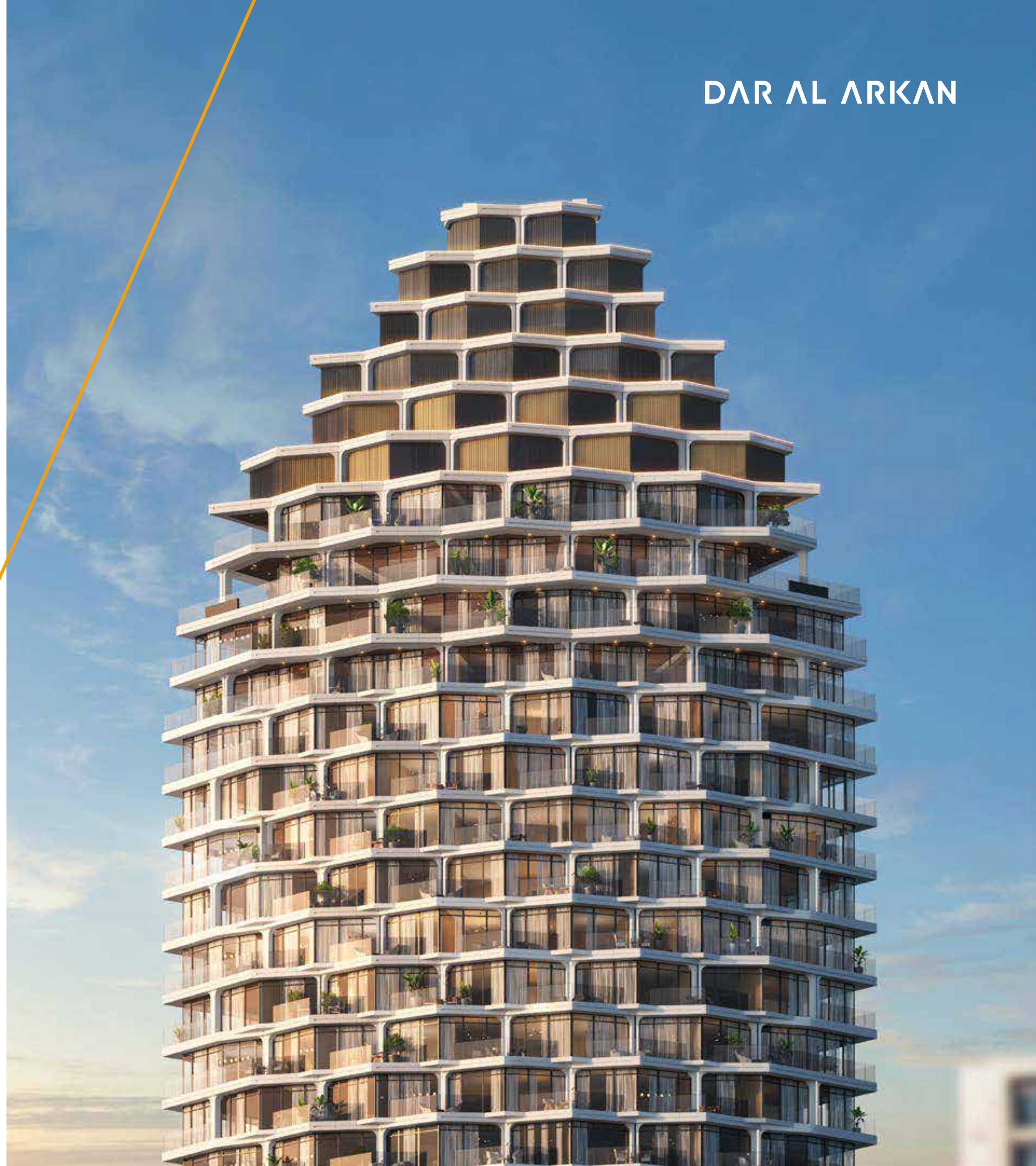
# HOMES WITH BENEFITS

Benefits of residents go beyond W Residences. The Residences owners will benefit from the "Platinum Elite" status in Marriott Bonvoy for two years, that includes Dedicated Elite support, complimentary lounge access, 10% off Best Available Rate and many more amenities in over 7400+ hotels around the globe.



DAR AL ARKAN

# FLOOR PLANS

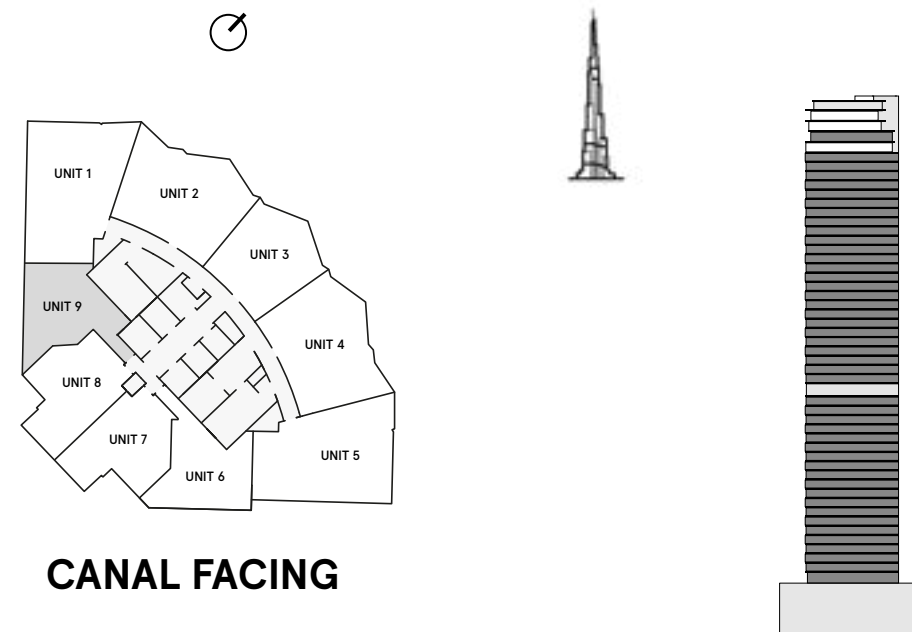


# W RESIDENCES DUBAI - DOWNTOWN

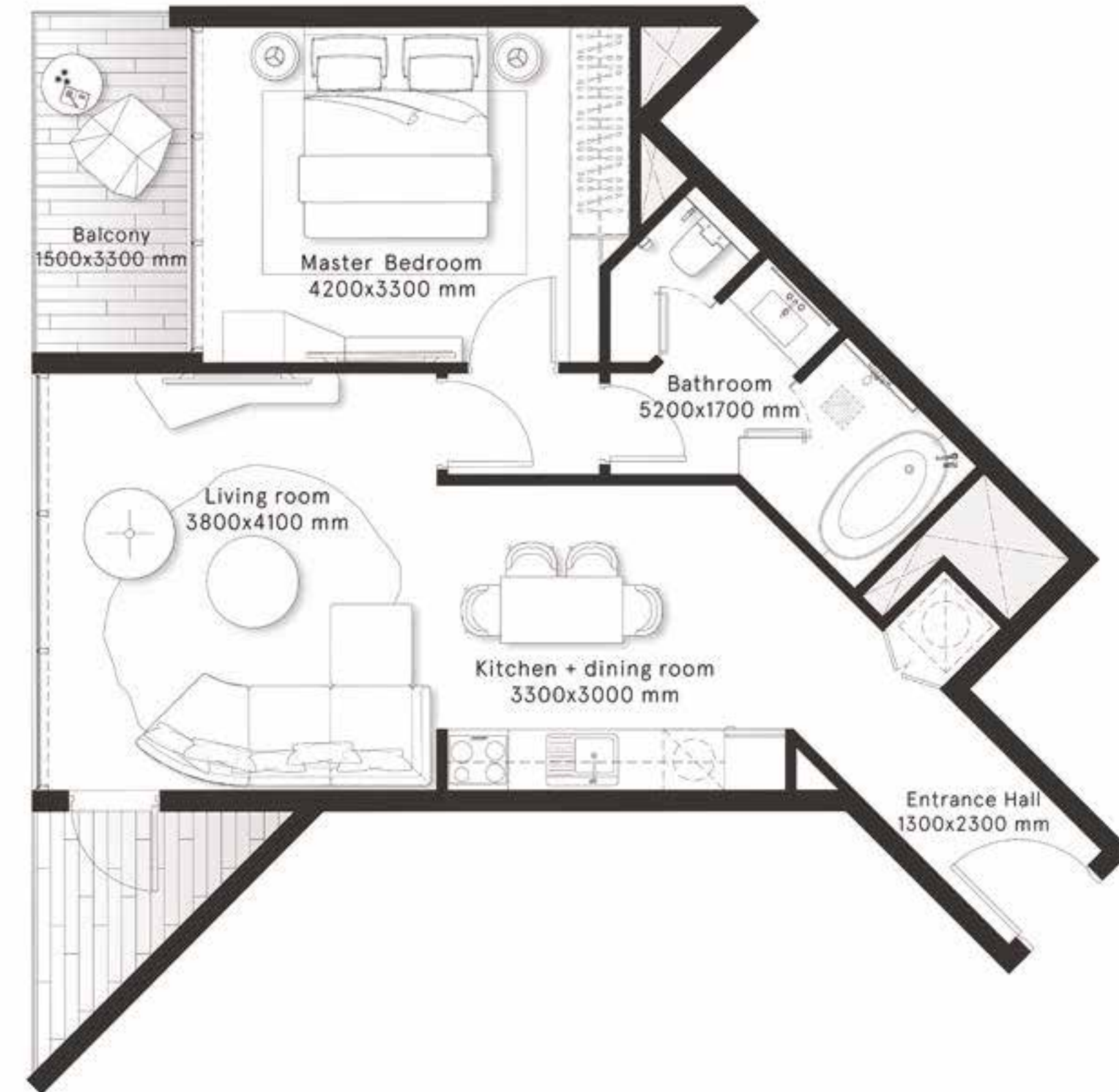
## 1 Bedroom Type A

FLOORS  
1-46,48

CITY  
VIEWS



<b>INTERNAL AREA</b>	656.8 sq ft
<b>BALCONY AREA</b>	97.7 sq ft
<b>TOTAL AREA</b>	<b>754.5 sq ft</b>

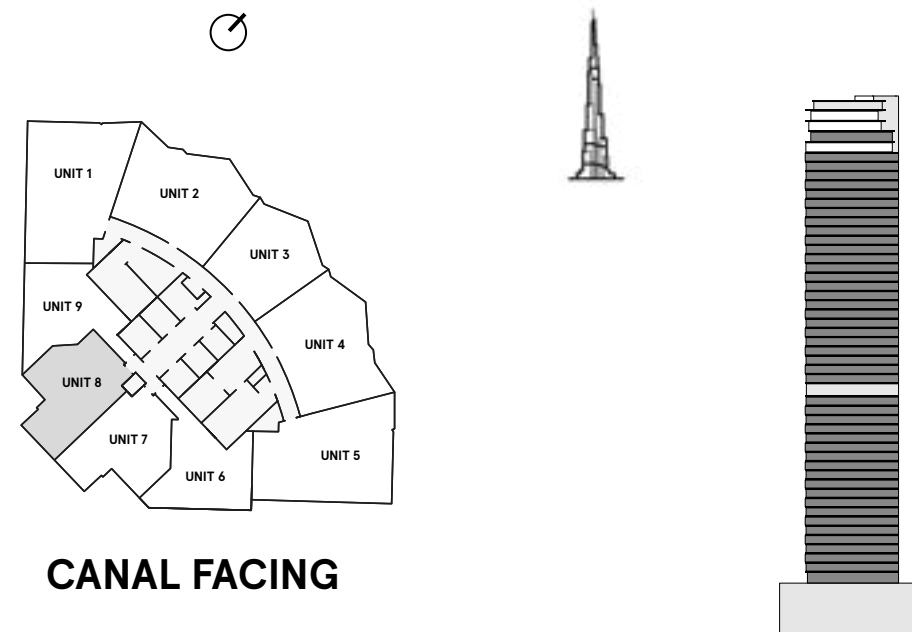


# W RESIDENCES DUBAI - DOWNTOWN

## 1 Bedroom Type B

FLOORS  
1-46,48

CITY  
VIEWS



<b>INTERNAL AREA</b>	603.7 sq ft
<b>BALCONY AREA</b>	101 sq ft
<b>TOTAL AREA</b>	<b>704.7 sq ft</b>

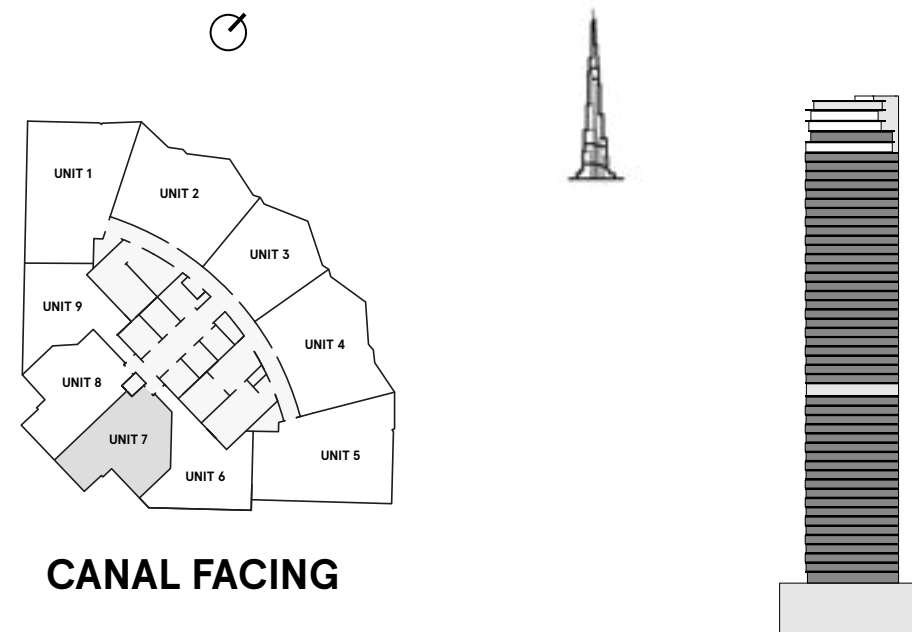


# W RESIDENCES DUBAI - DOWNTOWN

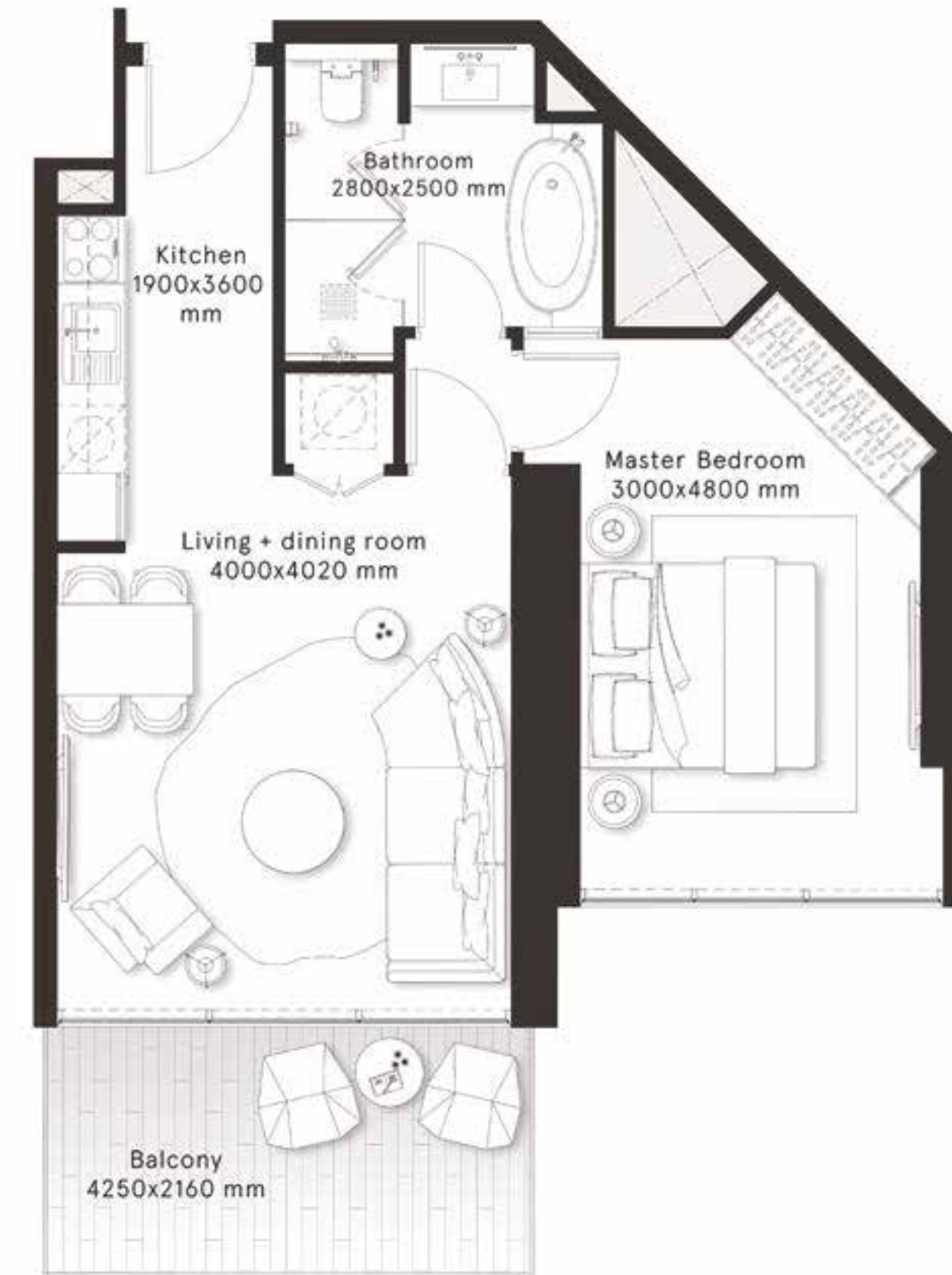
## 1 Bedroom Type B1

FLOORS  
1-46,48

CITY  
VIEWS



<b>INTERNAL AREA</b>	609.2 sq ft
<b>BALCONY AREA</b>	101 sq ft
<b>TOTAL AREA</b>	<b>710.2 sq ft</b>

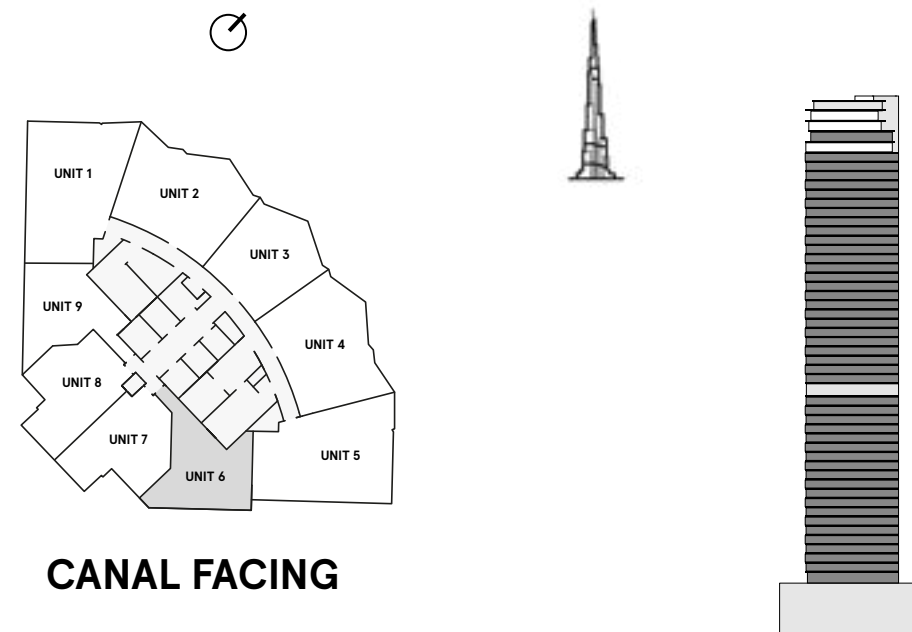


# W RESIDENCES DUBAI - DOWNTOWN

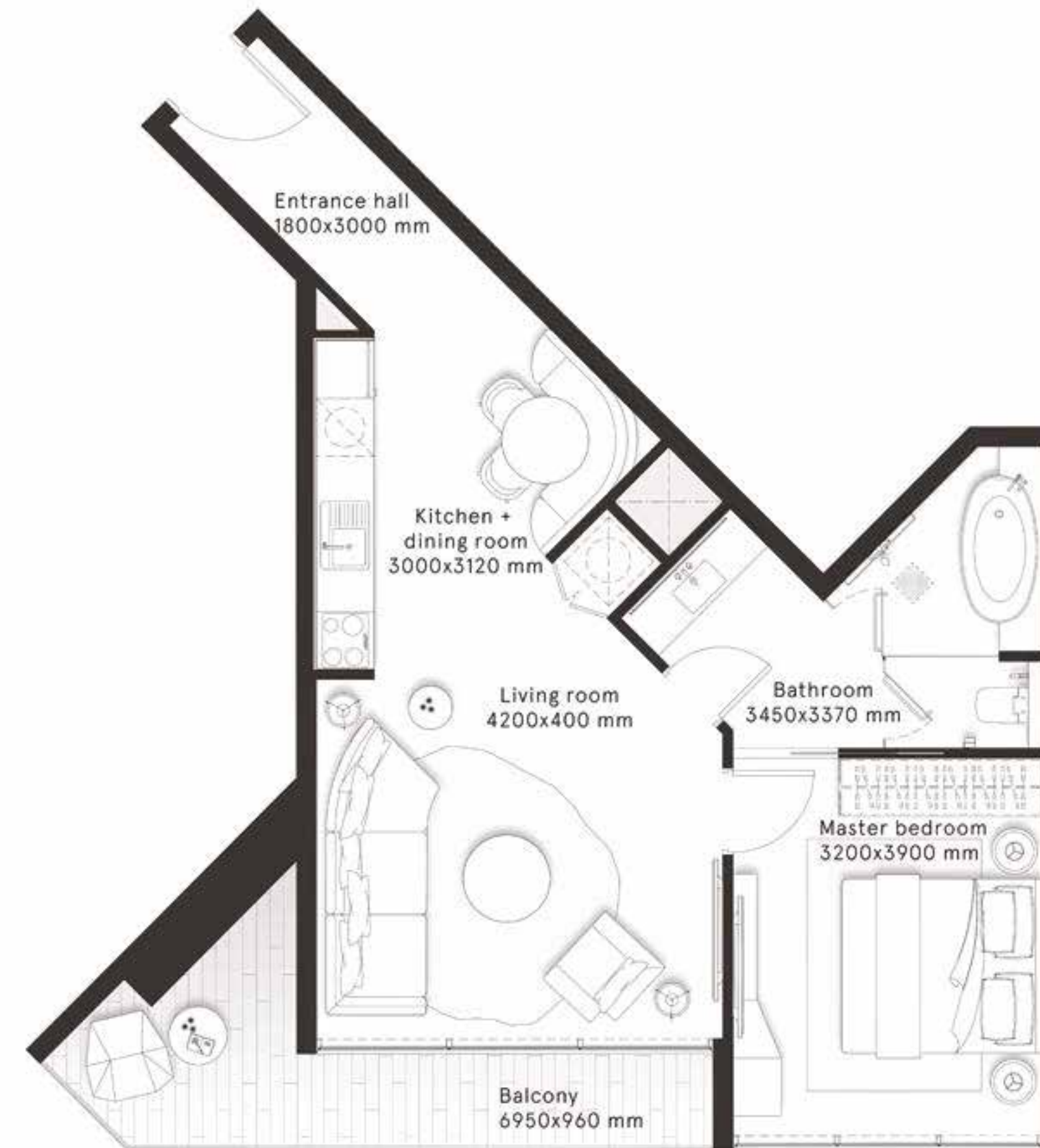
## 1 Bedroom Type C

FLOORS  
1-46,48

CITY  
VIEWS



<b>INTERNAL AREA</b>	646.8 sq ft
<b>BALCONY AREA</b>	107 sq ft
<b>TOTAL AREA</b>	<b>753.8 sq ft</b>



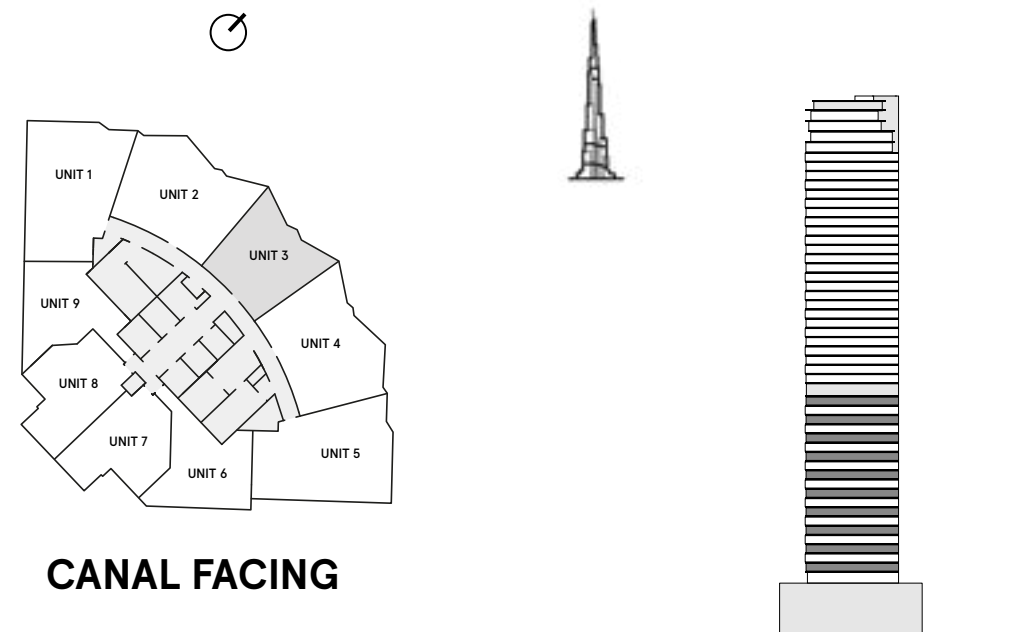


# W RESIDENCES DUBAI - DOWNTOWN

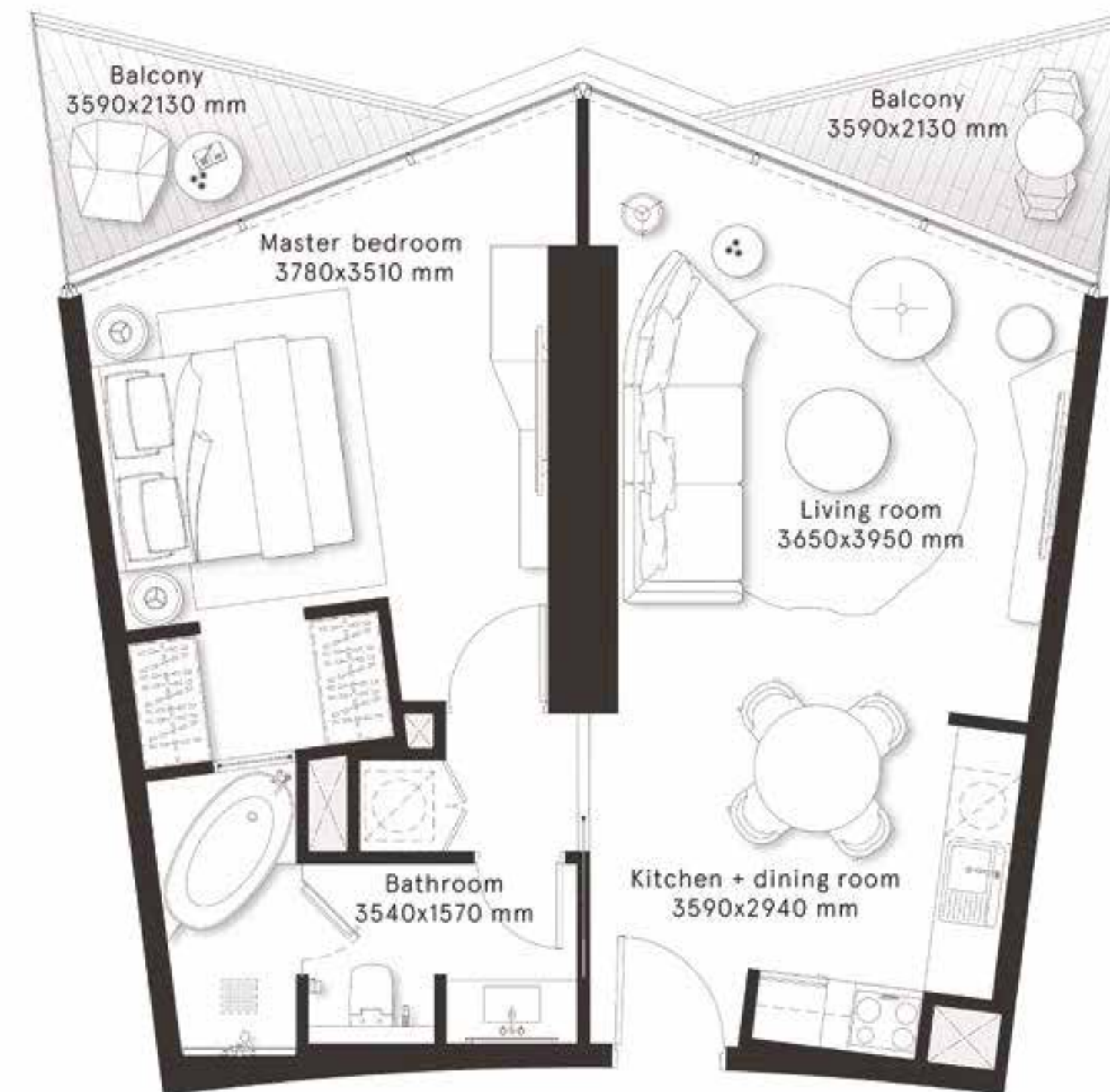
## 1 Bedroom Type D

FLOORS  
2,4,6,8,10,12,14,16,18,20

CITY  
VIEWS



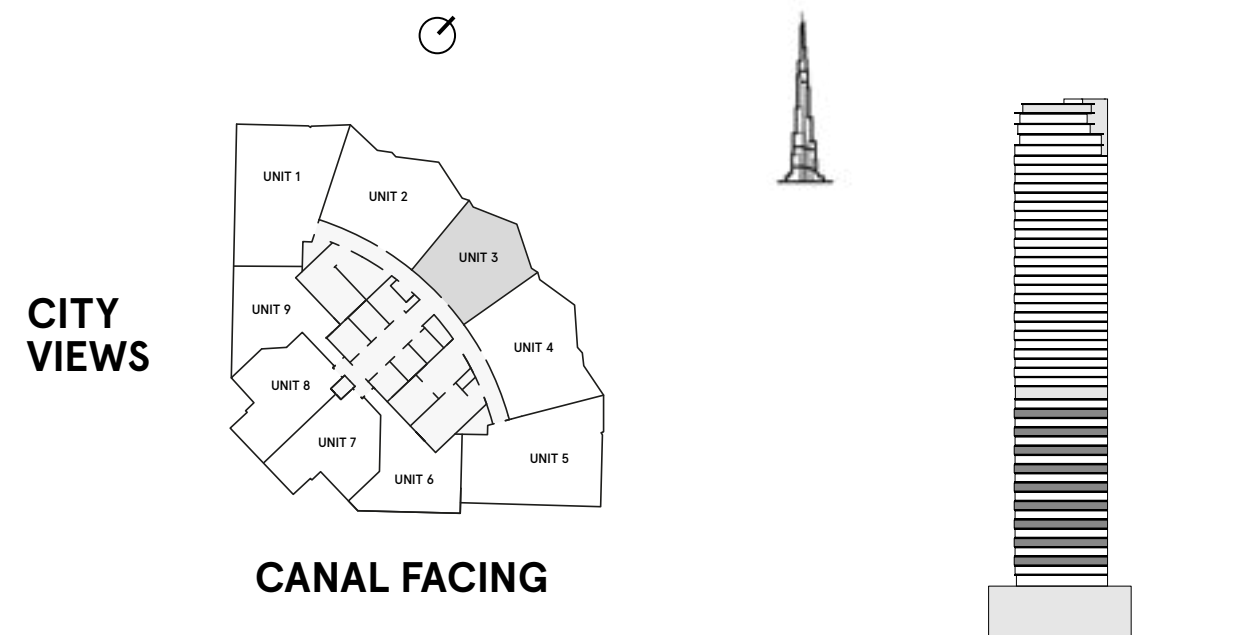
<b>INTERNAL AREA</b>	667.8 sq ft
<b>BALCONY AREA</b>	102.15 sq ft
<b>TOTAL AREA</b>	<b>769.95 sq ft</b>



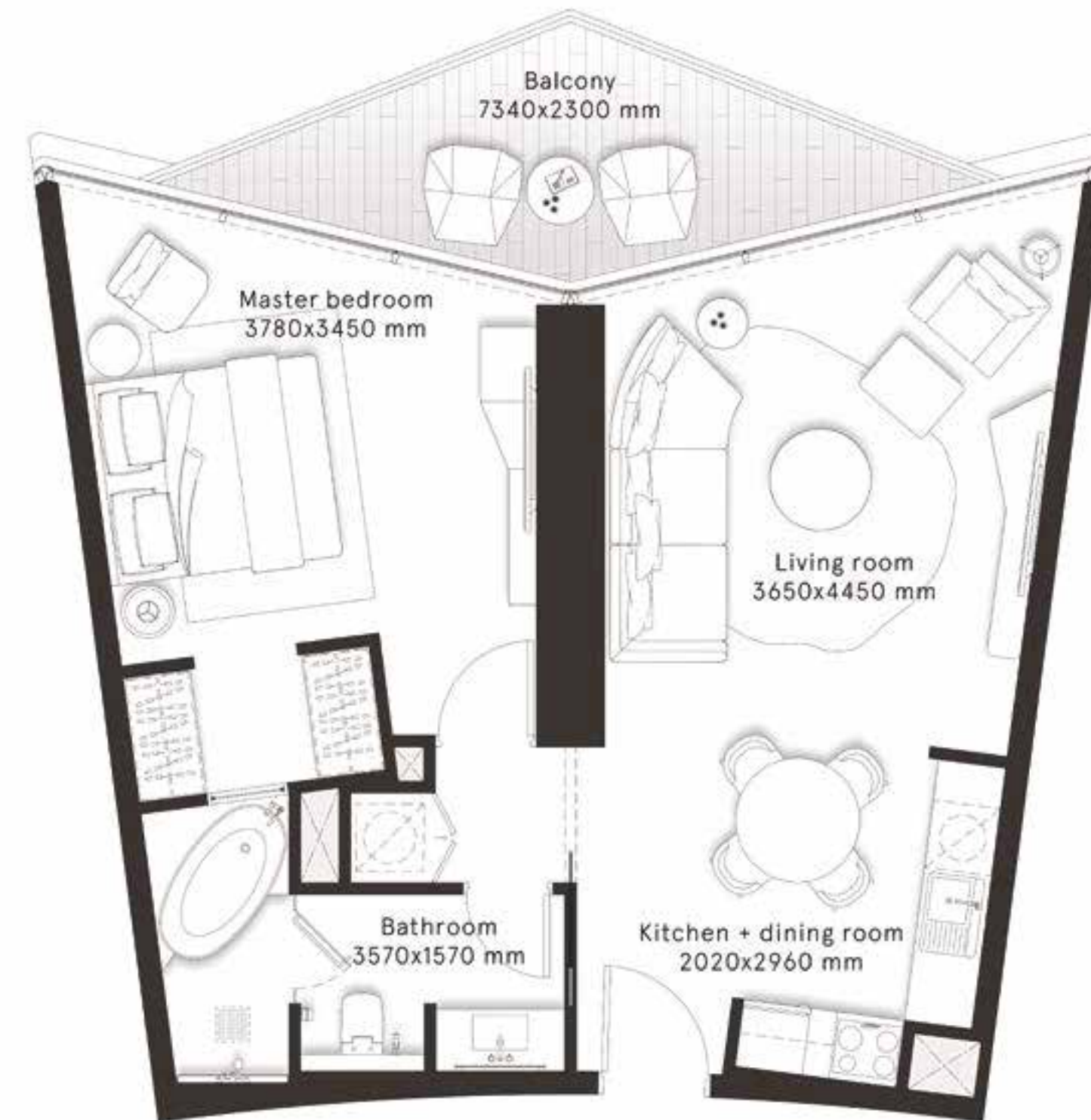
# W RESIDENCES DUBAI - DOWNTOWN

## 1 Bedroom Type E

FLOORS  
3,5,7,9,11,13,15,17,19



<b>INTERNAL AREA</b>	658.2 sq ft
<b>BALCONY AREA</b>	119.1 sq ft
<b>TOTAL AREA</b>	<b>777.3 sq ft</b>



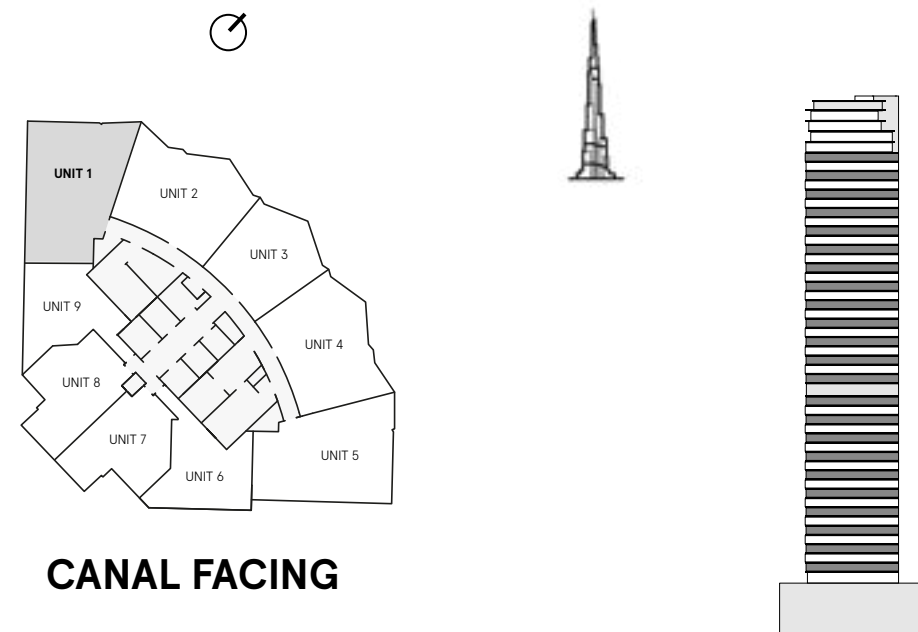
# W RESIDENCES DUBAI - DOWNTOWN

## 2 Bedrooms Type A

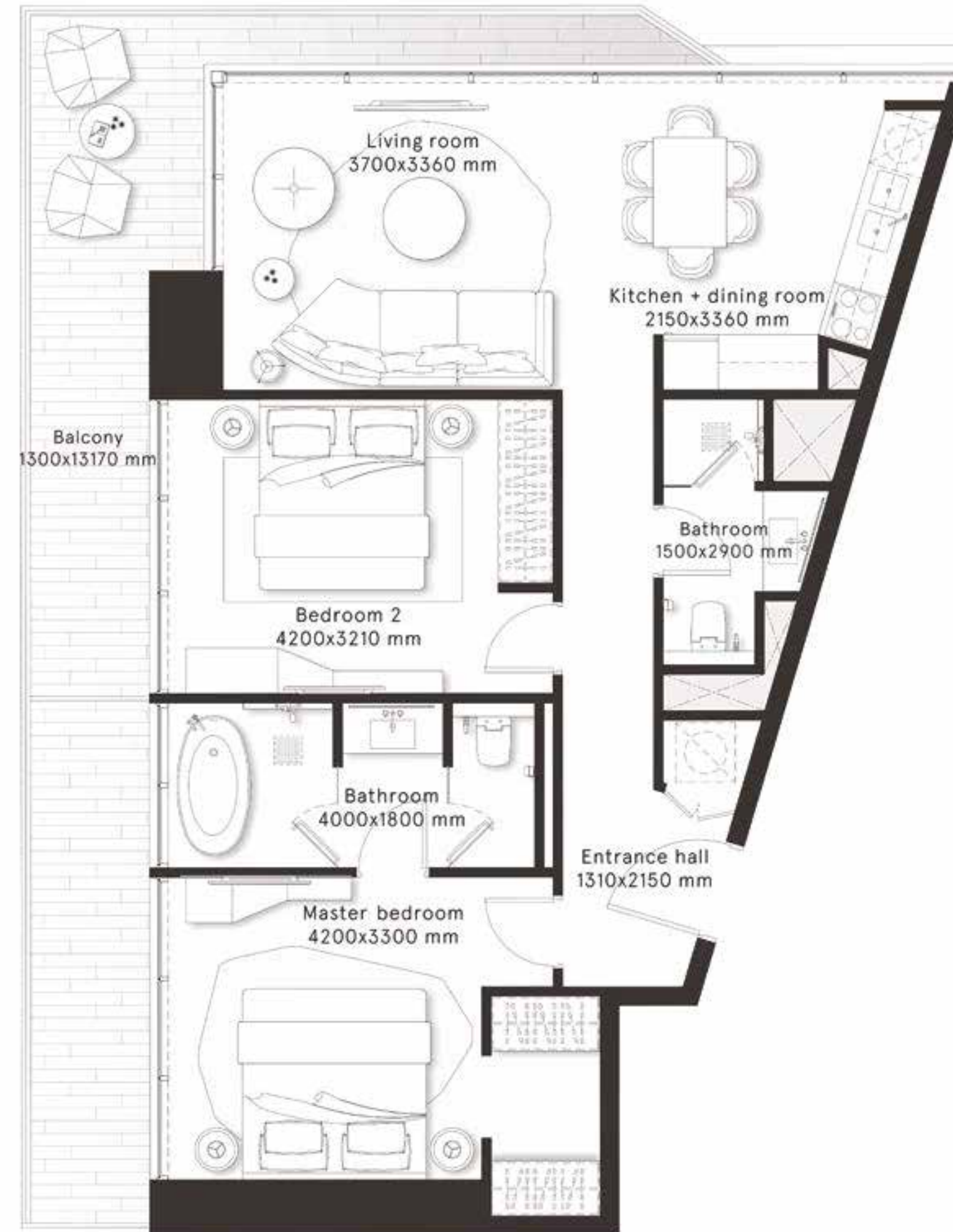
### FLOORS

2,4,6,8,10,12,14,16,18,20,22,24,26,  
28,30,32,34,36,38,40,42,44,46

### CITY VIEWS



<b>INTERNAL AREA</b>	896.8 sq ft
<b>BALCONY AREA</b>	249.6 sq ft
<b>TOTAL AREA</b>	<b>1,146.4 sq ft</b>



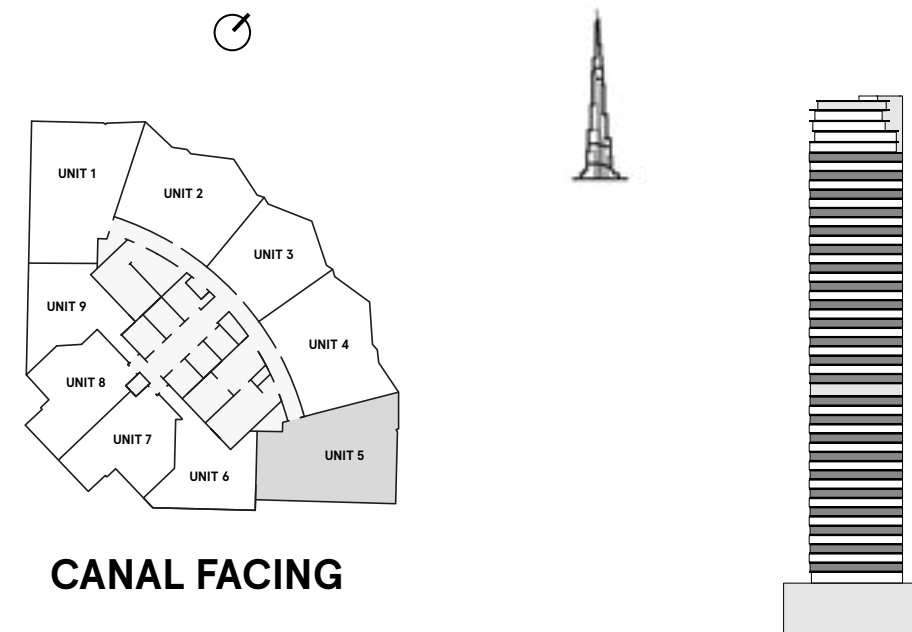
# W RESIDENCES DUBAI - DOWNTOWN

## 2 Bedrooms Type A1

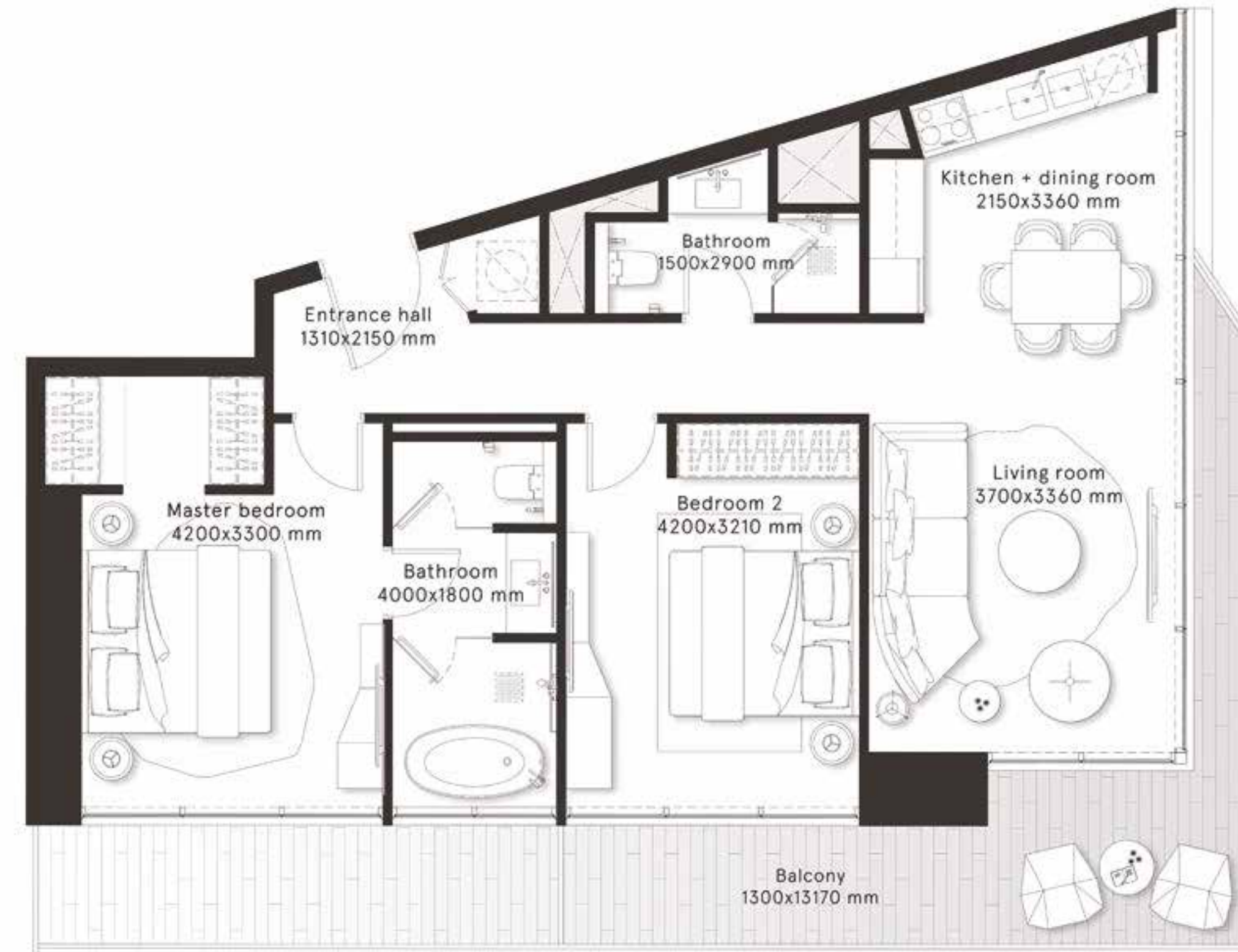
### FLOORS

2,4,6,8,10,12,14,16,18,20,22,24,26,  
28,30,32,34,36,38,40,42,44,46

### CITY VIEWS



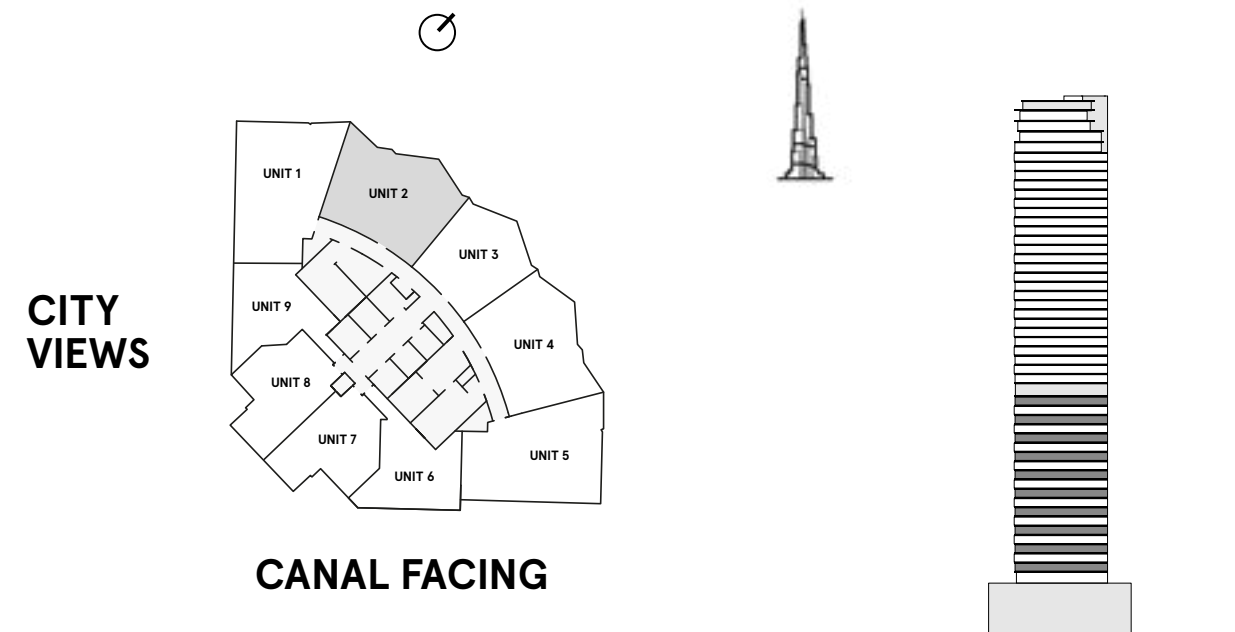
<b>INTERNAL AREA</b>	893.8 sq ft
<b>BALCONY AREA</b>	249.9 sq ft
<b>TOTAL AREA</b>	<b>1,143.7 sq ft</b>



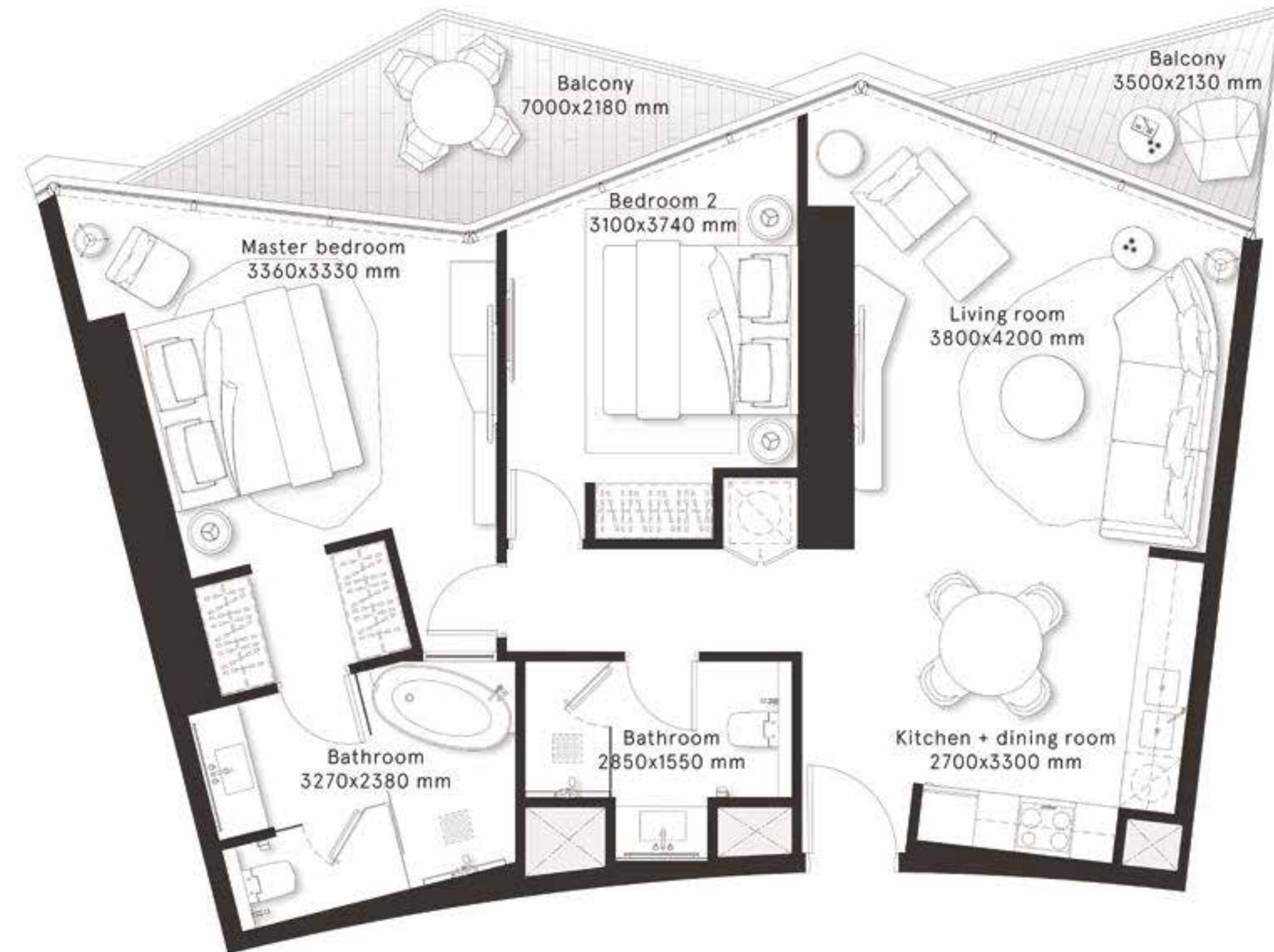
# W RESIDENCES DUBAI - DOWNTOWN

## 2 Bedrooms Type B

FLOORS  
2,4,6,8,10,12,14,16,18,20



<b>INTERNAL AREA</b>	925.1 sq ft
<b>BALCONY AREA</b>	153.3 sq ft
<b>TOTAL AREA</b>	<b>1,078.4 sq ft</b>

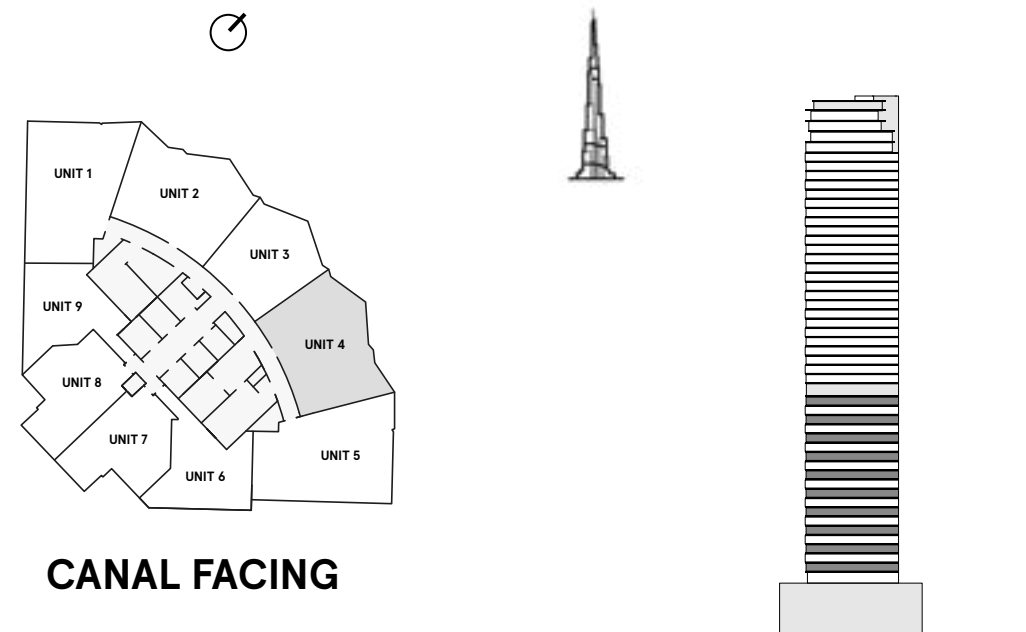


# W RESIDENCES DUBAI - DOWNTOWN

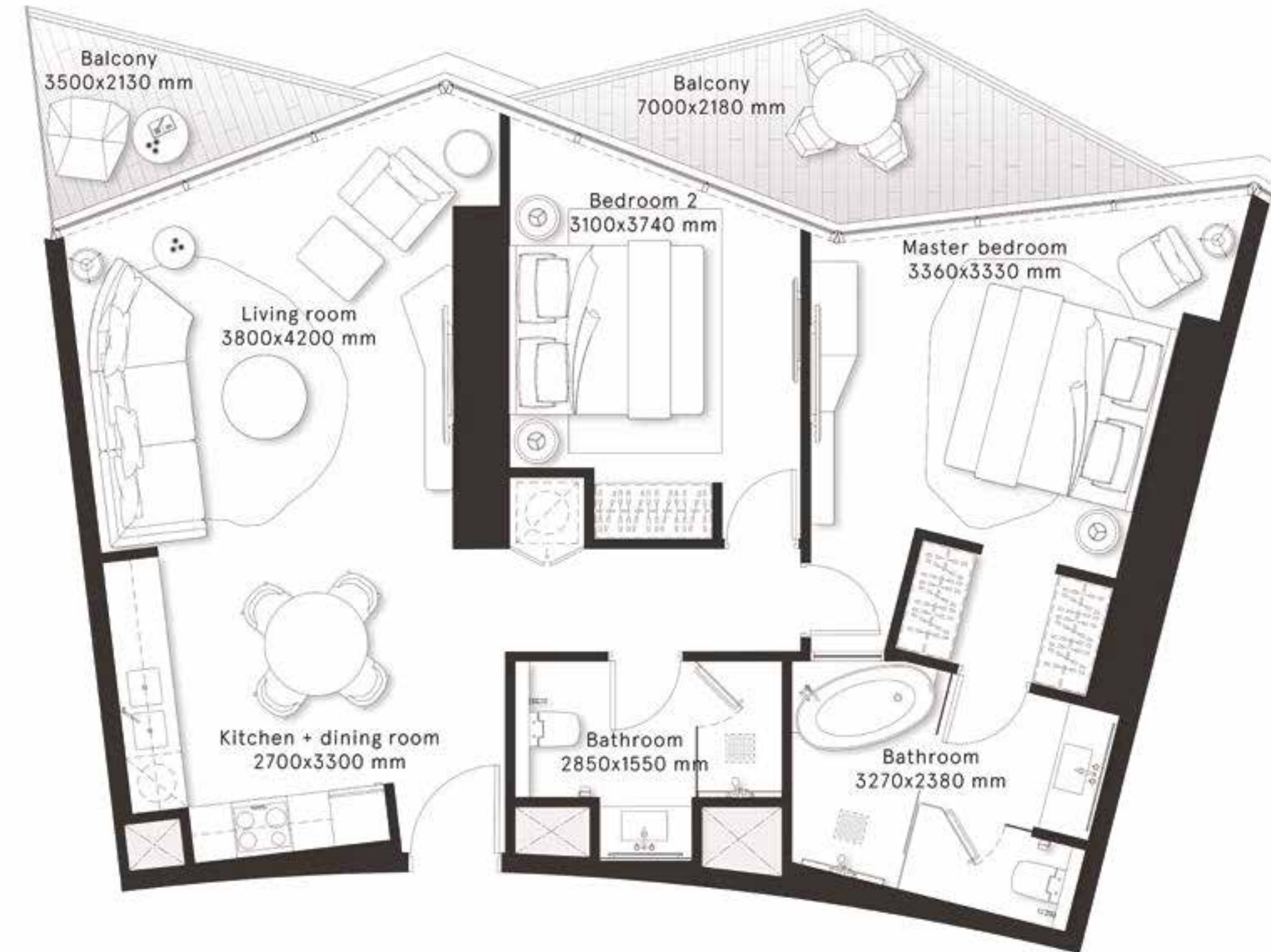
## 2 Bedrooms Type B1

FLOORS  
2,4,6,8,10,12,14,16,18,20

CITY  
VIEWS



<b>INTERNAL AREA</b>	925.8 sq ft
<b>BALCONY AREA</b>	153.2 sq ft
<b>TOTAL AREA</b>	<b>1,079 sq ft</b>



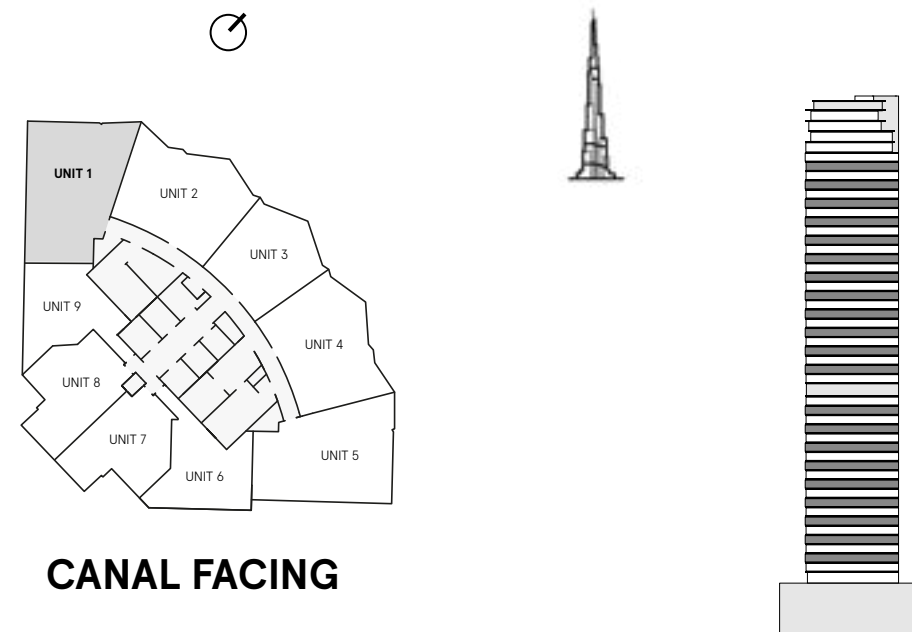
# W RESIDENCES DUBAI - DOWNTOWN

## 2 Bedrooms Type C

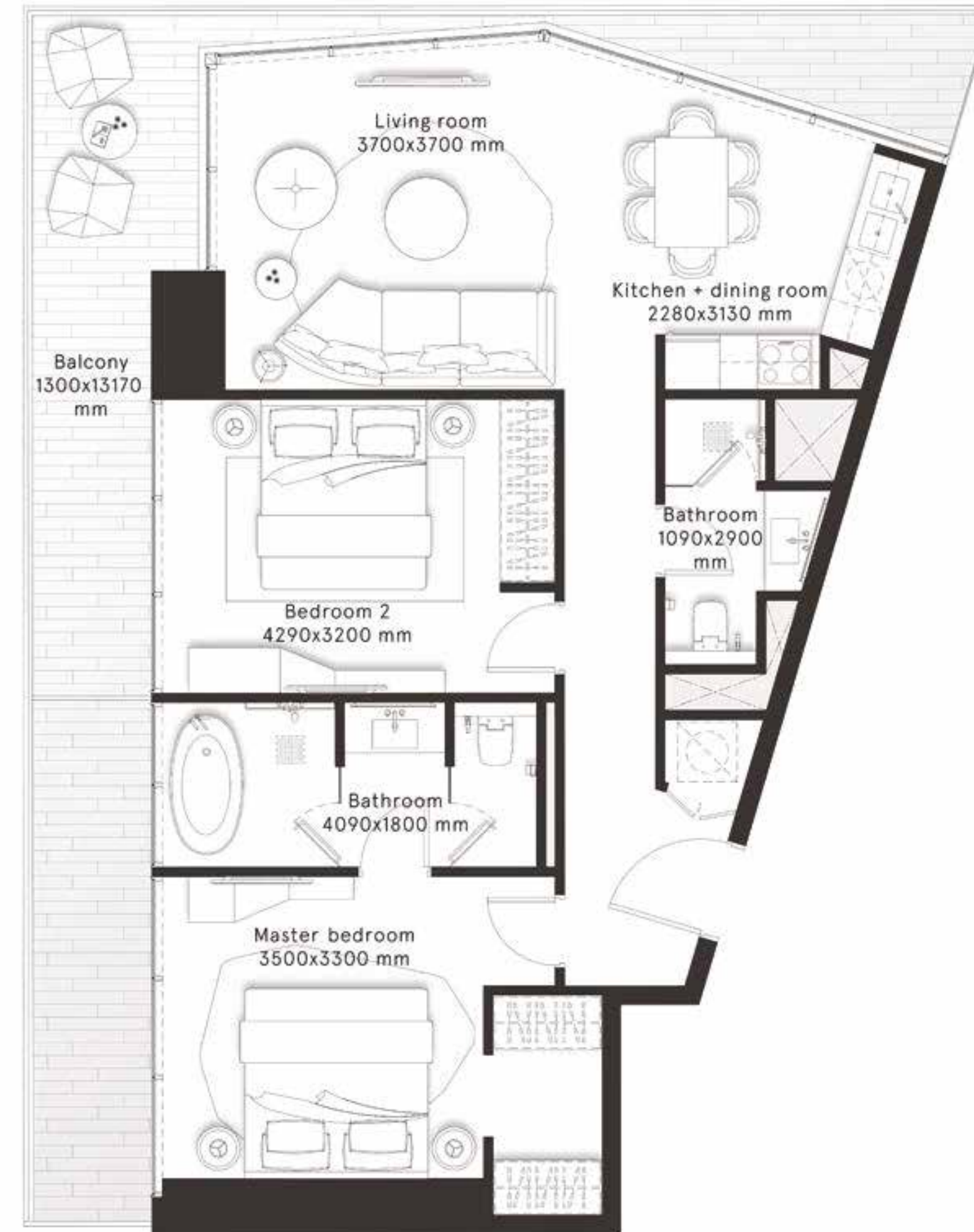
### FLOORS

3,5,7,9,11,13,15,17,19,23,25,27,  
29,31,33,35,37,39,41,43,45

### CITY VIEWS



<b>INTERNAL AREA</b>	892.1 sq ft
<b>BALCONY AREA</b>	283.9 sq ft
<b>TOTAL AREA</b>	<b>1,176 sq ft</b>

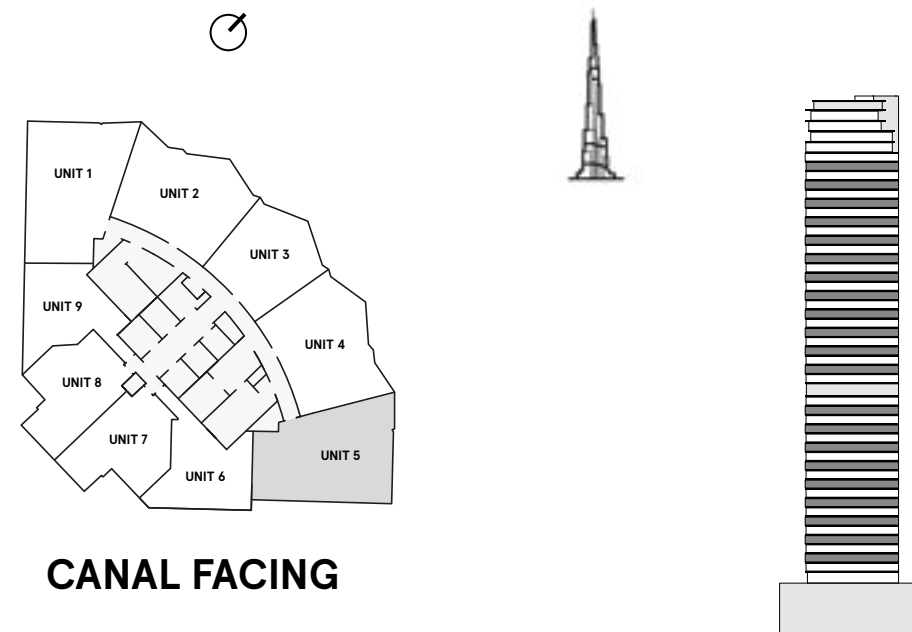


# W RESIDENCES DUBAI - DOWNTOWN

## 2 Bedrooms Type C1

FLOORS  
3,5,7,9,11,13,15,17,19,23,25,27,  
29,31,33,35,37,39,41,43,45

CITY  
VIEWS



<b>INTERNAL AREA</b>	894 sq ft
<b>BALCONY AREA</b>	273.4 sq ft
<b>TOTAL AREA</b>	<b>1,167.4 sq ft</b>

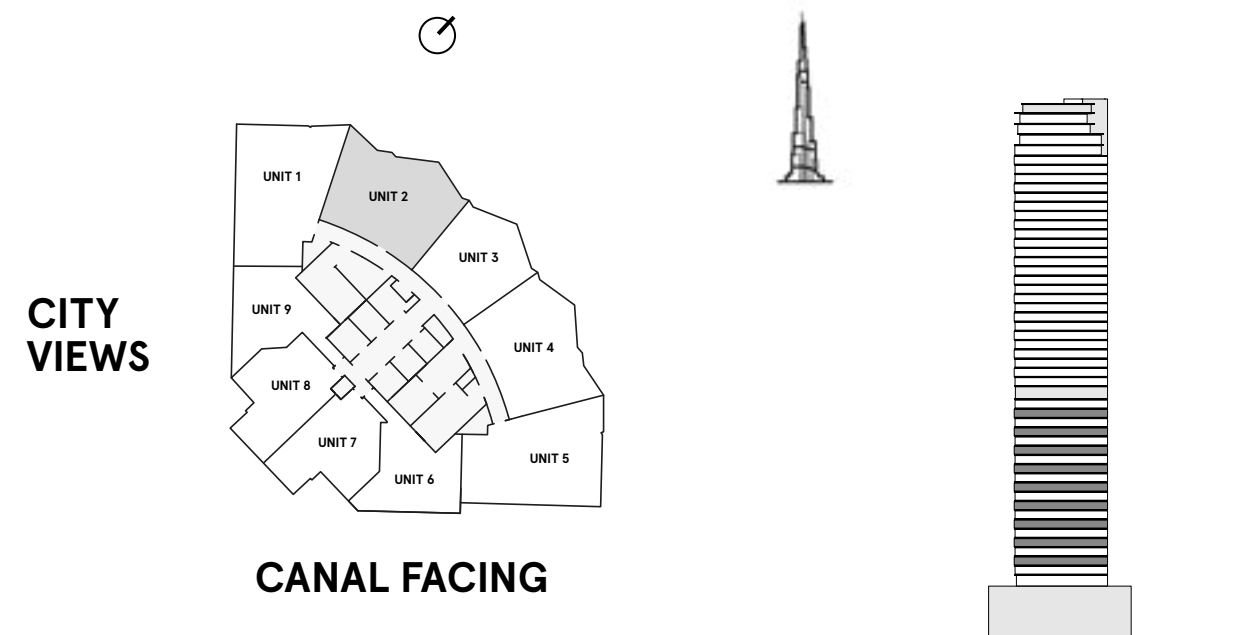




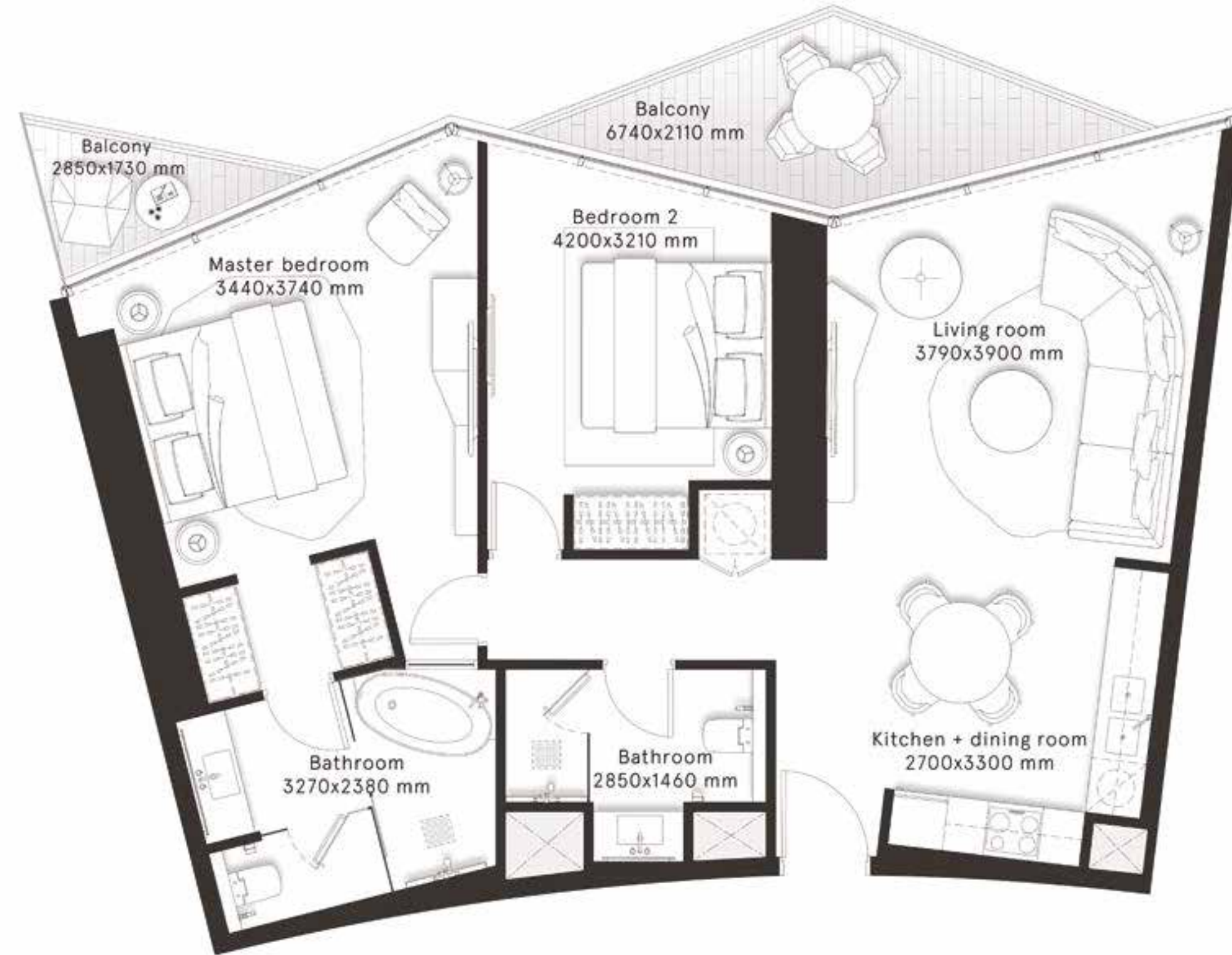
# W RESIDENCES DUBAI - DOWNTOWN

## 2 Bedrooms Type D

FLOORS  
3,5,7,9,11,13,15,17,19



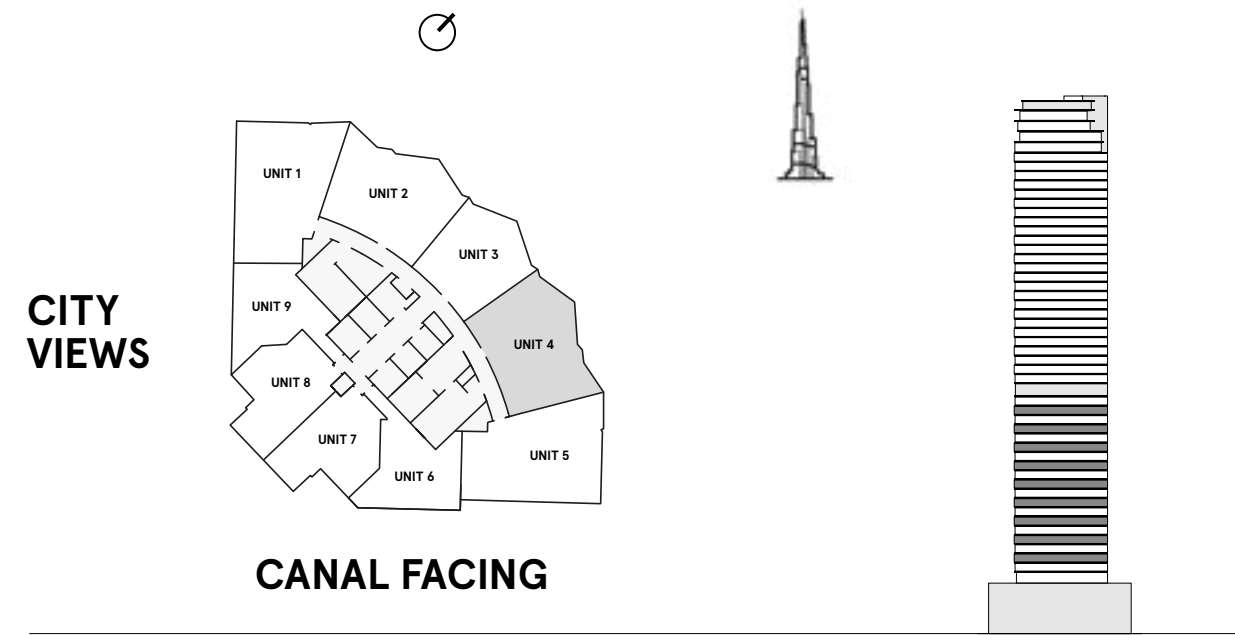
<b>INTERNAL AREA</b>	927 sq ft
<b>BALCONY AREA</b>	135.5 sq ft
<b>TOTAL AREA</b>	<b>1,062.5 sq ft</b>



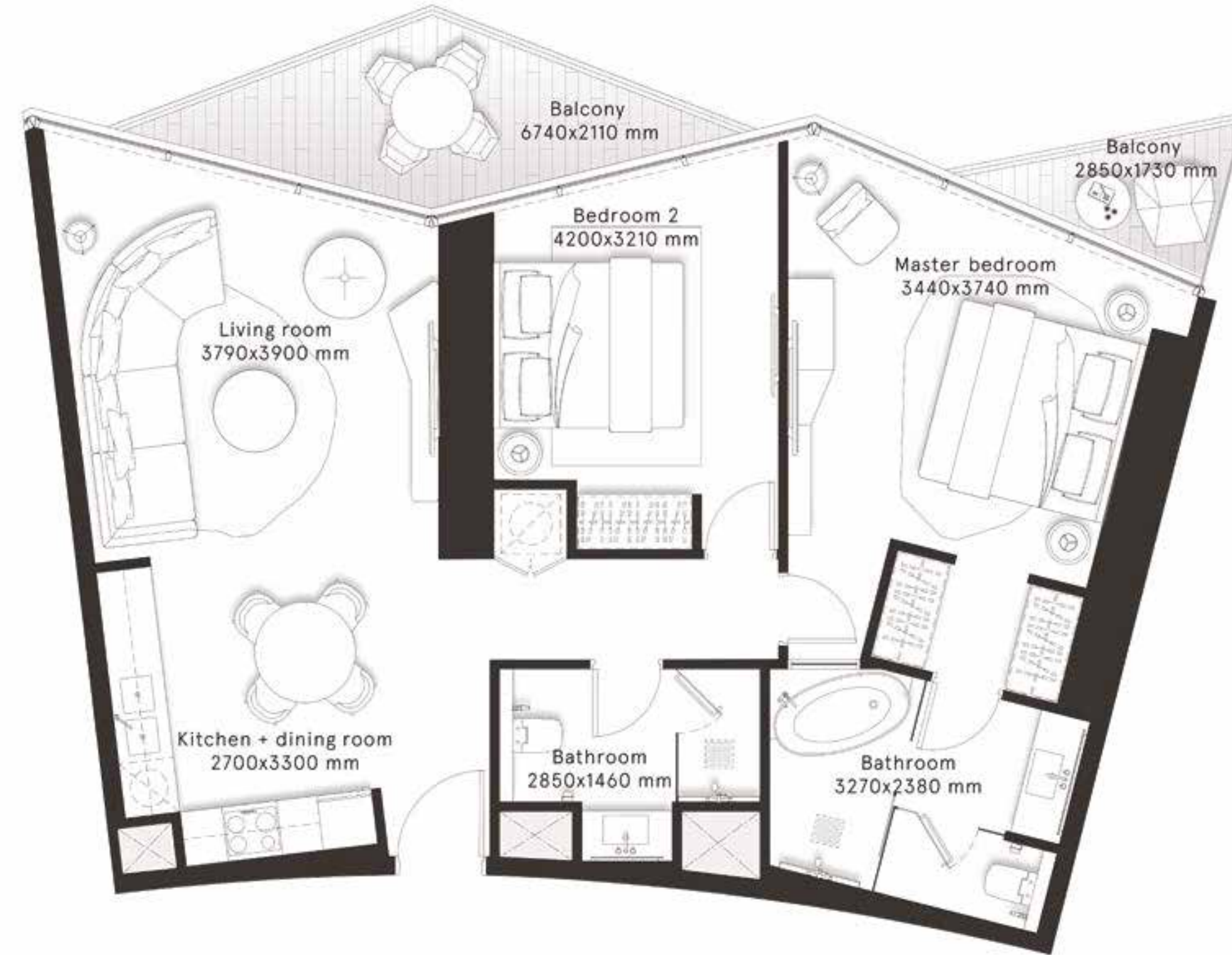
# W RESIDENCES DUBAI - DOWNTOWN

**2 Bedrooms  
Type D1**

FLOORS  
3,5,7,9,11,13,15,17,19



<b>INTERNAL AREA</b>	933.7 sq ft
<b>BALCONY AREA</b>	128.3 sq ft
<b>TOTAL AREA</b>	<b>1,062 sq ft</b>

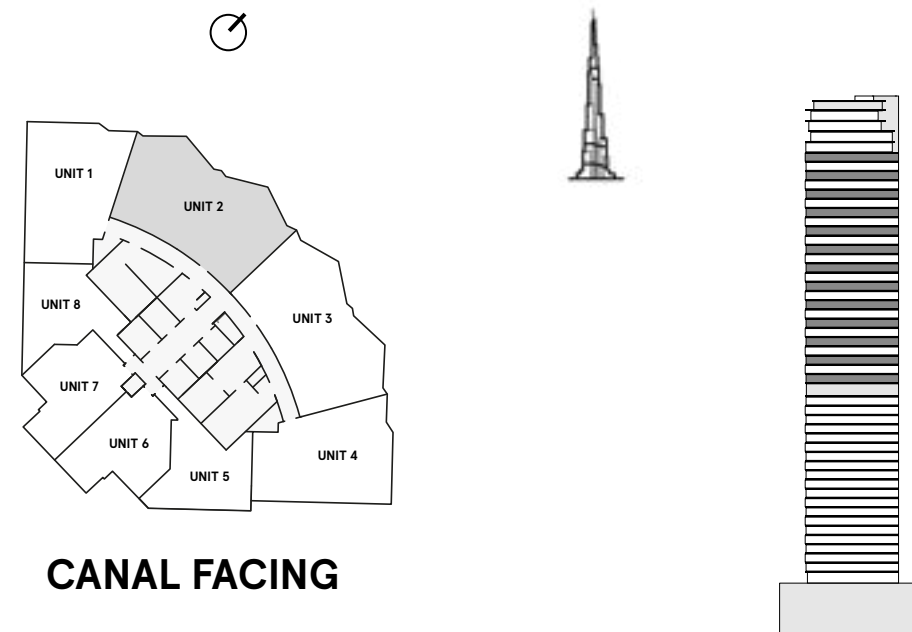


# W RESIDENCES DUBAI - DOWNTOWN

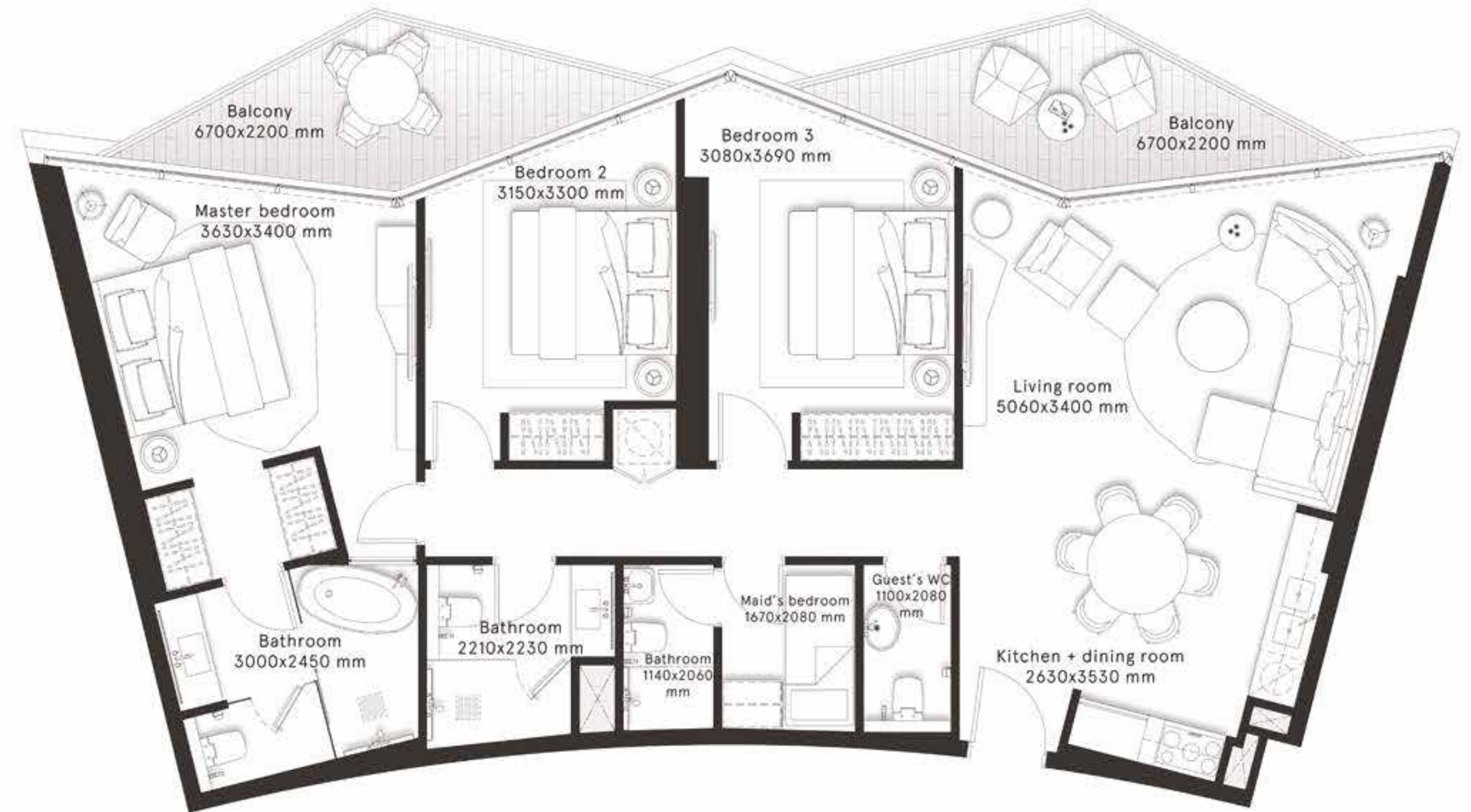
## 3 Bedrooms Type A

FLOORS  
22,24,26,28,30,32,34,  
36,38,40,42,44,46

CITY  
VIEWS



INTERNAL AREA	1,268.5 sq ft
BALCONY AREA	204.3 sq ft
<b>TOTAL AREA</b>	<b>1,472.8 sq ft</b>

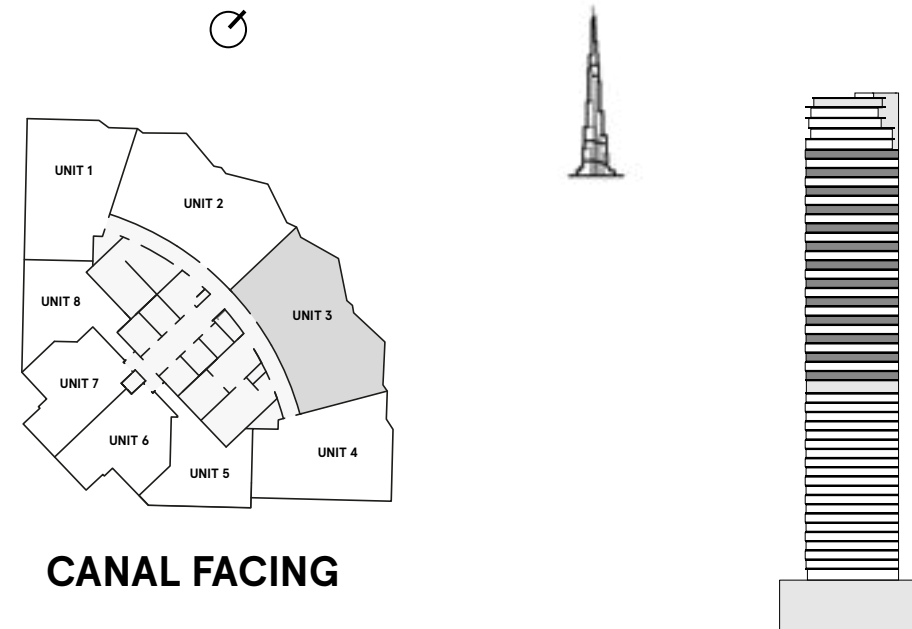


# W RESIDENCES DUBAI - DOWNTOWN

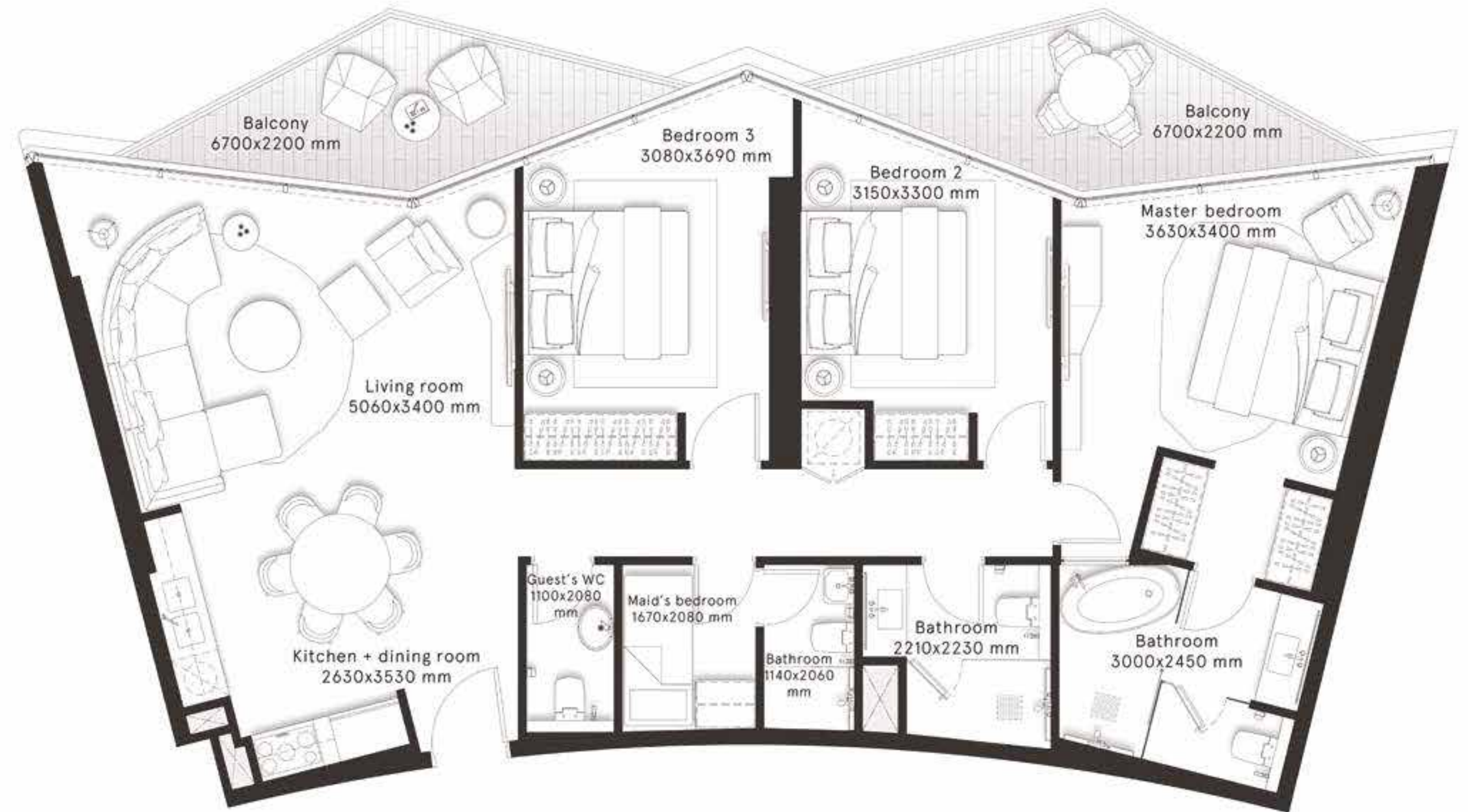
## 3 Bedrooms Type A1

FLOORS  
22,24,26,28,30,32,34,  
36,38,40,42,44,46

CITY  
VIEWS



<b>INTERNAL AREA</b>	1,266.9 sq ft
<b>BALCONY AREA</b>	204.3 sq ft
<b>TOTAL AREA</b>	<b>1,471.2 sq ft</b>

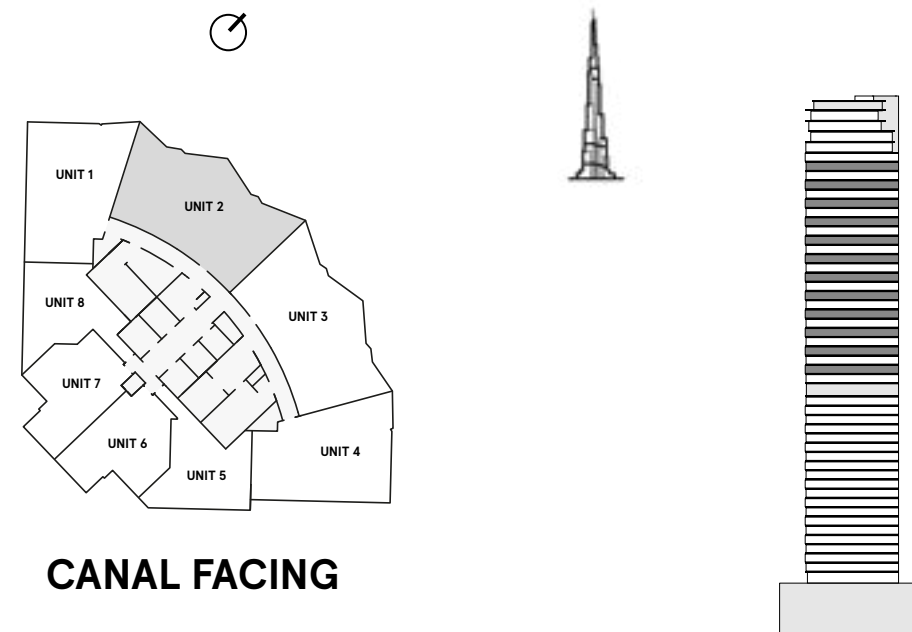


# W RESIDENCES DUBAI - DOWNTOWN

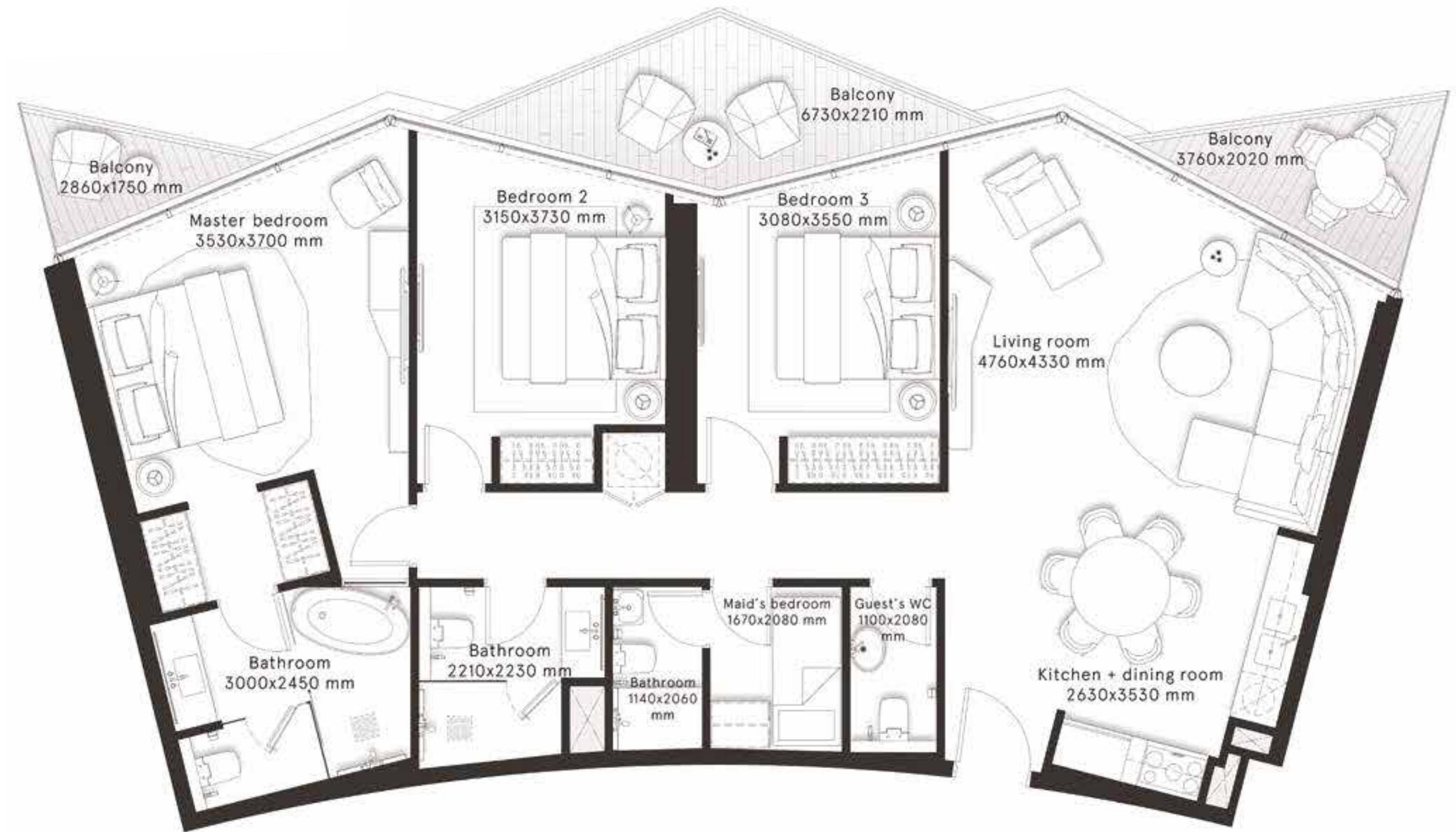
## 3 Bedrooms Type B

FLOORS  
23,25,27,29,31,33,  
35,37,39,41,43,45

CITY  
VIEWS



INTERNAL AREA	1,268 sq ft
BALCONY AREA	195 sq ft
TOTAL AREA	<b>1,463 sq ft</b>

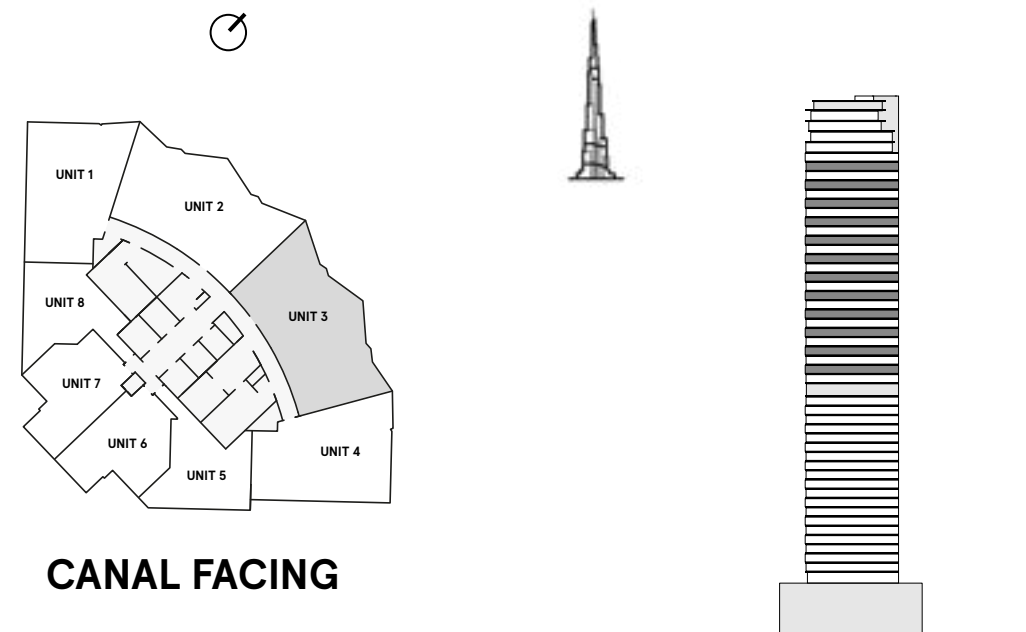


# W RESIDENCES DUBAI - DOWNTOWN

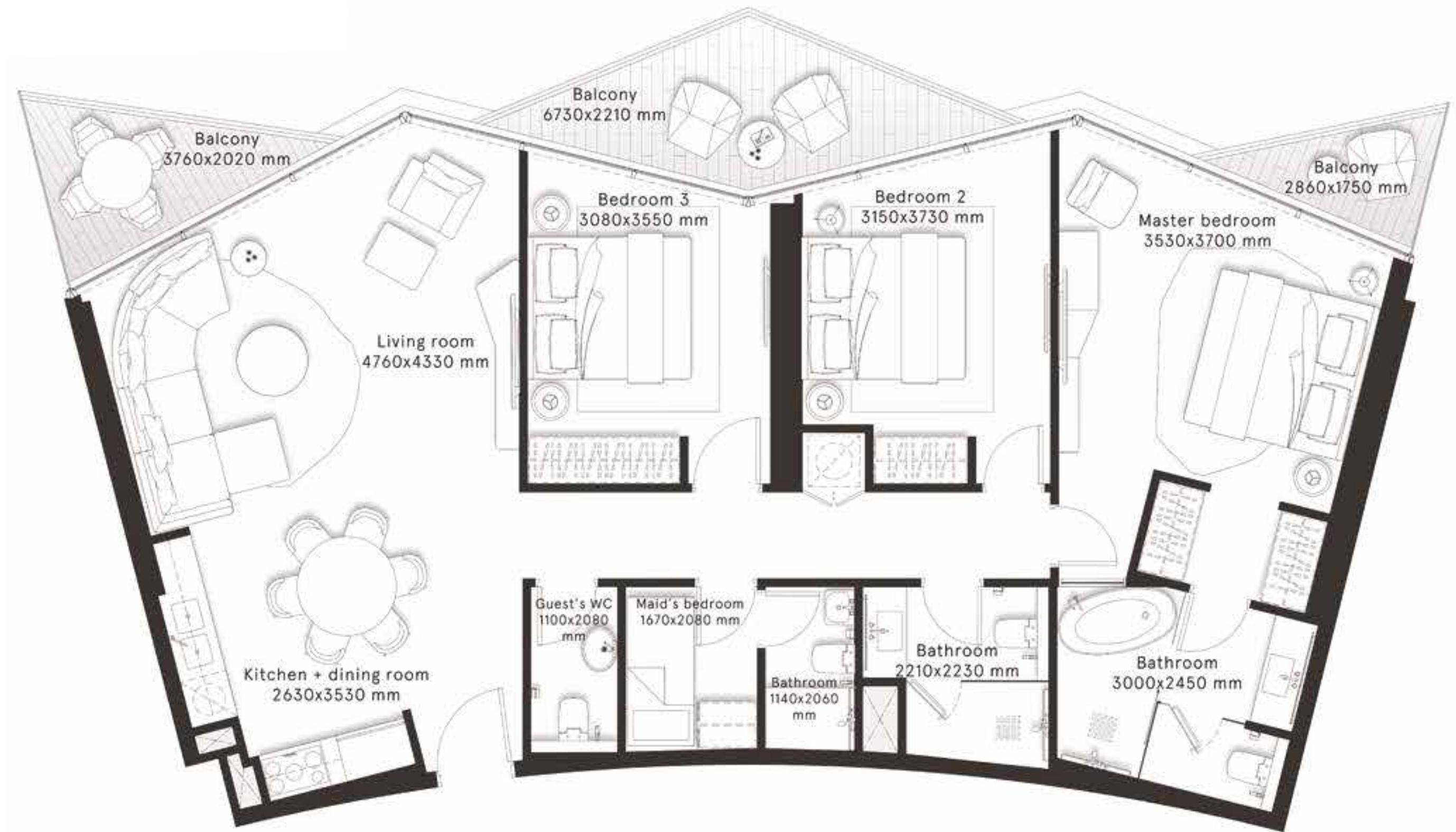
## 3 Bedrooms Type B1

FLOORS  
23,25,27,29,31,33,  
35,37,39,41,43,45

CITY  
VIEWS



<b>INTERNAL AREA</b>	1,271.2 sq ft
<b>BALCONY AREA</b>	187.8 sq ft
<b>TOTAL AREA</b>	<b>1,459 sq ft</b>





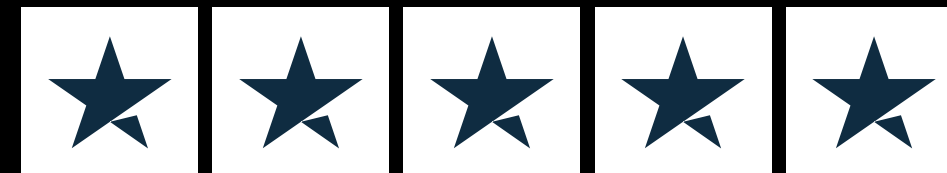
# DAR AL ARKAN



DUBAI  
DOWNTOWN  
THE RESIDENCES

# Betterhomes.

Rated 'Excellent' on  Trustpilot



### Head Office

Vision Tower 42nd floor, Business Bay, Dubai

### Dubai Marina Office

Marina Plaza, office 1901, Dubai Marina, Dubai

### Motor City Office

Control Tower, office 2101, Motor City, Dubai

### Abu Dhabi Office

Block D1, Al Zeina, Al Raha Beach, Abu Dhabi

T. +971 4 409 0998 | E. [offplan@bhomes.com](mailto:offplan@bhomes.com)

**bhomes.com**