



DUBAI HILLS
ESTATE
MBR CITY

PARK HEIGHTS I





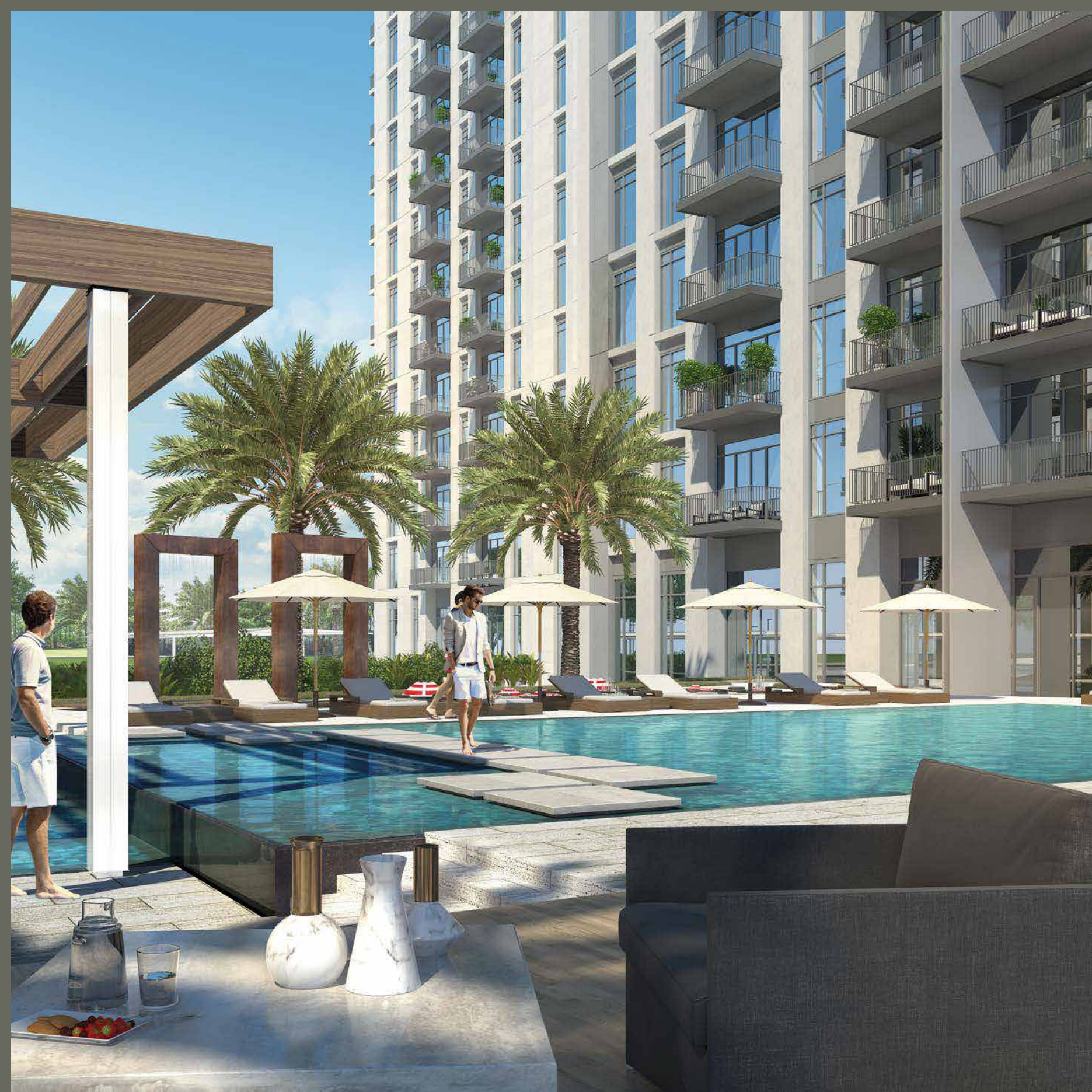
7 MINUTES
WALK TO THE MALL

DIRECT ACCESS
TO BOULEVARD

5 MINUTES
WALK TO
THE CENTRAL PARK









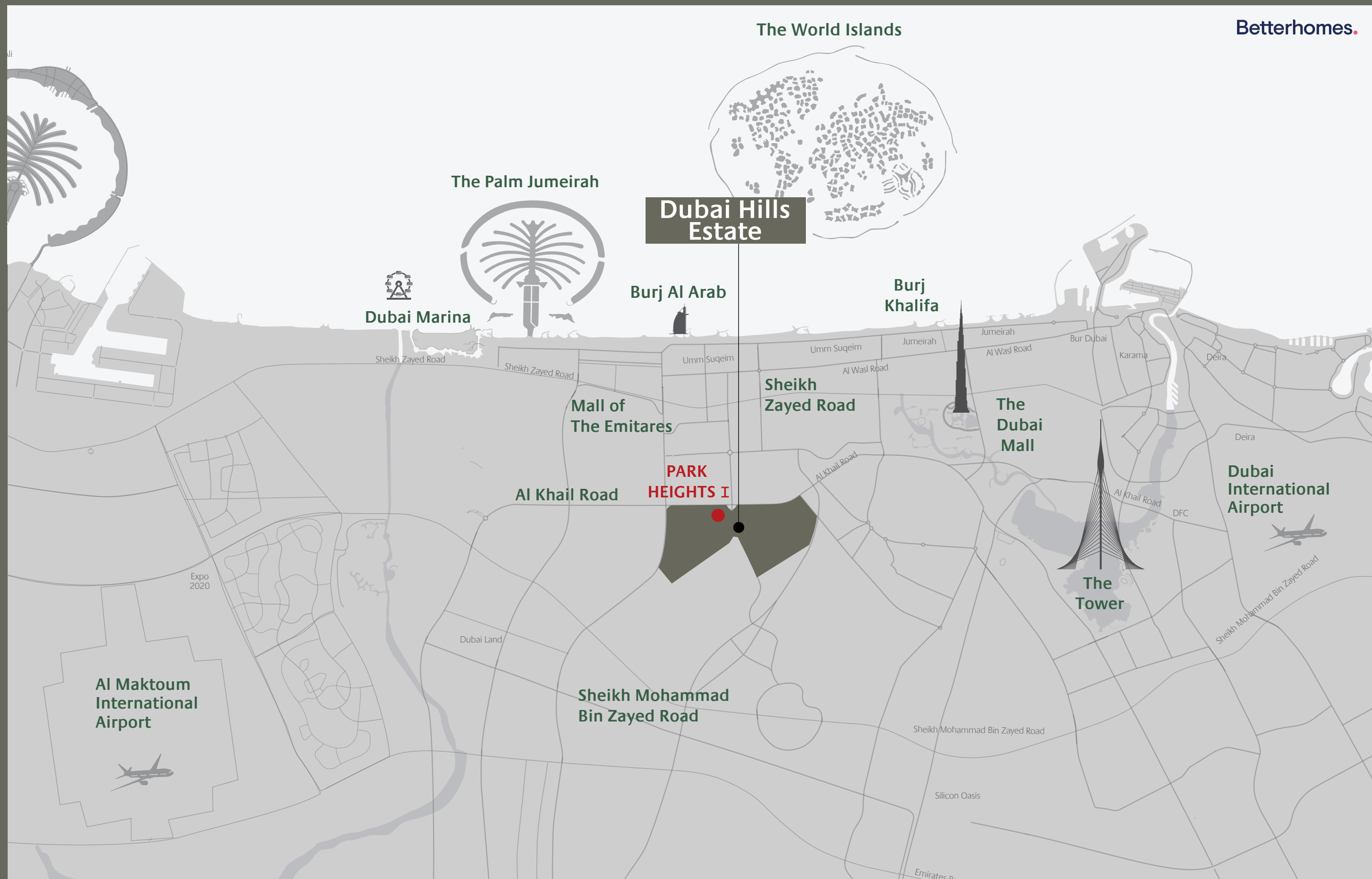
PARK HEIGHTS I AT DUBAI HILLS ESTATE



- | | |
|---------------------|--------------------------|
| 01 - Community Park | 11 - Townhouse Community |
| 02 - Regional Park | 12 - Townhome Community |
| 03 - Golf Club | 13 - Private Hospital |
| 04 - Golf Academy | 14 - Government Hospital |
| 05 - Driving Range | 15 - Civil Defence |
| 06 - Tennis Academy | 16 - Police |
| 07 - Schools | 17 - Community Retail |
| 08 - Hotels | 18 - Golf Villas |
| 09 - Juma Mosque | 19 - Golf Apartments |
| 10 - Metro Station | 20 - Park Heights 1 |

DUBAI HILLS ESTATE

- Burj Khalifa**
10 Minutes
- The Dubai Mall**
10 Minutes
- Dubai Marina**
10 Minutes
- Jumeirah Beach**
12 Minutes
- The Tower - DCH**
15 Minutes
- Dubai Intl Airport**
20 Minutes
- Al Maktoum Airport**
35 Minutes



DISTANCES ARE APPROXIMATE



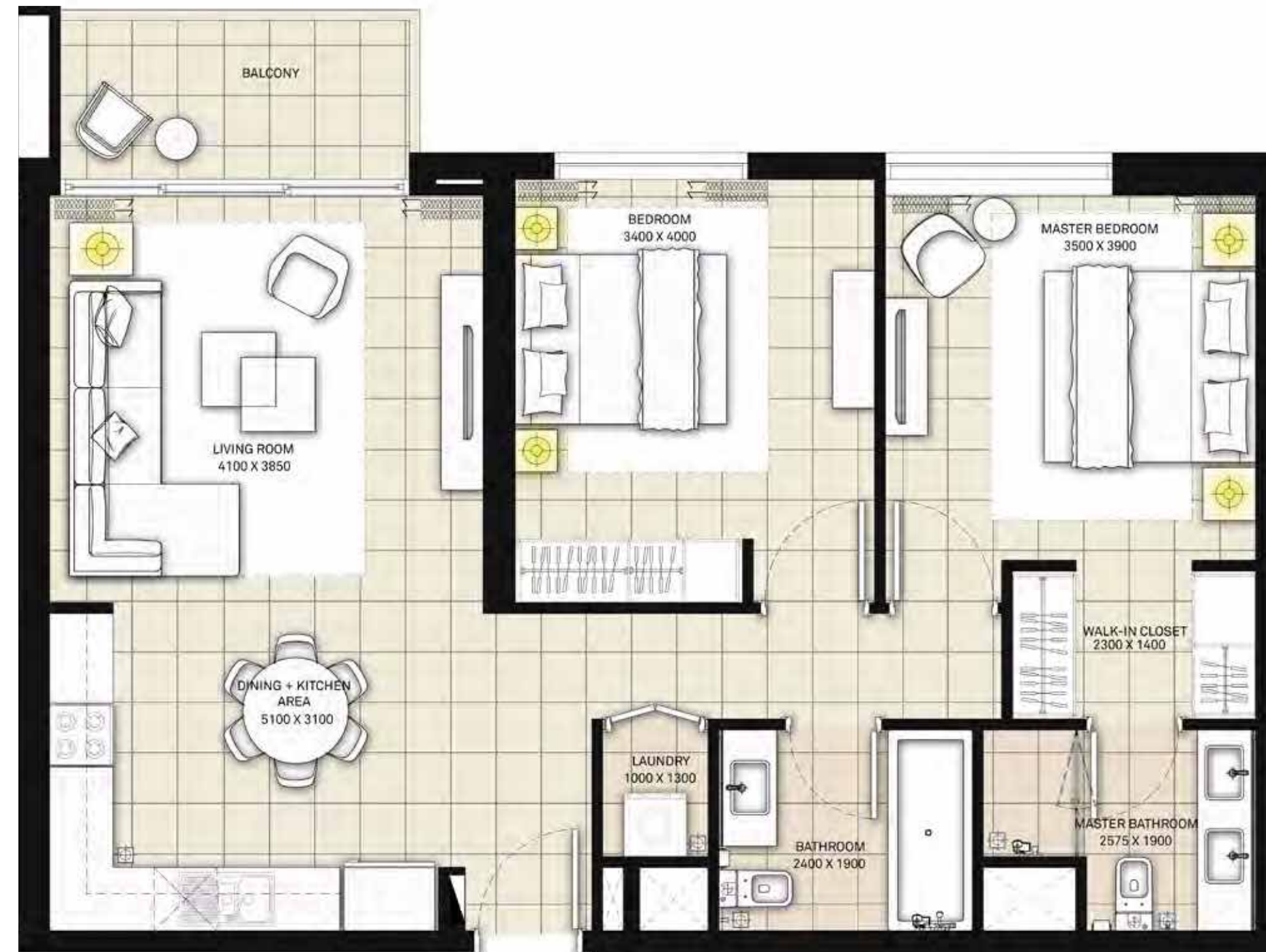


FLOOR PLANS



| LEVEL | UNIT NO | UNIT AREA | | BALCONY AREA | | TOTAL AREA | |
|-------|---------|-----------|--------|--------------|-------|------------|--------|
| | | SQM | SQFT. | SQM. | SQFT. | SQM. | SQFT. |
| 1-15 | UNIT 01 | 54.25 | 583.94 | 5.53 | 59.52 | 59.78 | 643.46 |
| | UNIT 02 | 54.25 | 583.94 | 5.53 | 59.52 | 59.78 | 643.46 |
| | UNIT 06 | 54.17 | 583.08 | 5.53 | 59.52 | 59.70 | 642.60 |
| | UNIT 07 | 54.17 | 583.08 | 5.53 | 59.52 | 59.70 | 642.60 |
| | UNIT 08 | 54.17 | 583.08 | 5.53 | 59.52 | 59.70 | 642.60 |
| | UNIT 09 | 54.17 | 583.08 | 5.53 | 59.52 | 59.70 | 642.60 |
| | UNIT 11 | 55.25 | 594.71 | 5.53 | 59.52 | 60.78 | 654.23 |
| | UNIT 14 | 54.25 | 583.94 | 5.53 | 59.52 | 59.78 | 643.46 |
| 16-18 | UNIT 01 | 54.29 | 584.37 | 5.53 | 59.52 | 59.82 | 643.89 |
| | UNIT 02 | 54.29 | 584.37 | 5.53 | 59.52 | 59.82 | 643.89 |
| | UNIT 06 | 54.19 | 583.30 | 5.53 | 59.52 | 59.72 | 642.82 |
| | UNIT 07 | 54.19 | 583.30 | 5.53 | 59.52 | 59.72 | 642.82 |
| | UNIT 08 | 54.19 | 583.30 | 5.53 | 59.52 | 59.72 | 642.82 |
| | UNIT 09 | 54.19 | 583.30 | 5.53 | 59.52 | 59.72 | 642.82 |
| | UNIT 11 | 55.27 | 594.92 | 5.53 | 59.52 | 60.80 | 654.44 |
| | UNIT 14 | 54.25 | 583.94 | 5.53 | 59.52 | 59.78 | 643.46 |





| LEVEL | UNIT NO | UNIT AREA | | BALCONY AREA | | TOTAL AREA | |
|-------|---------|-----------|--------|--------------|-------|------------|--------|
| | | SQM | SQFT. | SQM. | SQFT. | SQM. | SQFT. |
| 1-15 | UNIT 03 | 83.37 | 897.39 | 5.53 | 59.52 | 88.90 | 956.91 |
| | UNIT 10 | 83.31 | 896.74 | 5.53 | 59.52 | 88.84 | 956.26 |
| | UNIT 15 | 83.22 | 895.77 | 5.53 | 59.52 | 88.75 | 955.29 |
| 16-18 | UNIT 03 | 83.28 | 896.42 | 5.53 | 59.52 | 88.81 | 955.94 |
| | UNIT 10 | 83.44 | 898.14 | 5.53 | 59.52 | 88.97 | 957.66 |
| | UNIT 15 | 83.36 | 897.28 | 5.69 | 61.25 | 89.05 | 958.53 |



Betterhomes.



1. All dimensions are in imperial and metric, and measured to structural elements and exclude wall finishes and construction tolerances. 2. All materials, dimensions, and drawings are approximate only. 3. Information is subject to change without notice, at developer's absolute discretion. 4. Actual area may vary from the stated area. 5. Drawings not to scale. 6. All images used are for illustrative purposes only and do not represent the actual size, features, specifications, fittings, and furnishings. 7. The developer reserves the right to make revisions/ alterations, at its absolute discretion, without any liability whatsoever.

| LEVEL | UNIT NO | UNIT AREA | | BALCONY AREA | | TOTAL AREA | |
|-------|---------|--------------|--------|--------------|--------|---------------|---------|
| | | SQM | SQFT. | SQM. | SQFT. | SQM. | SQFT. |
| 1-15 | UNIT 04 | 82.72 | 890.39 | 16.74 | 180.19 | 99.46 | 1070.58 |
| | UNIT 12 | 83.89 | 902.98 | 16.82 | 181.05 | 100.71 | 1084.03 |
| 16-18 | UNIT 04 | 82.60 | 889.10 | 16.77 | 180.51 | 99.37 | 1069.61 |
| | UNIT 12 | 83.91 | 903.20 | 16.61 | 178.79 | 100.52 | 1081.99 |

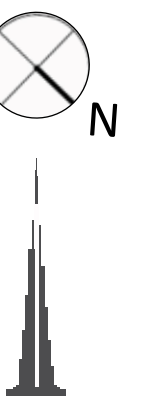
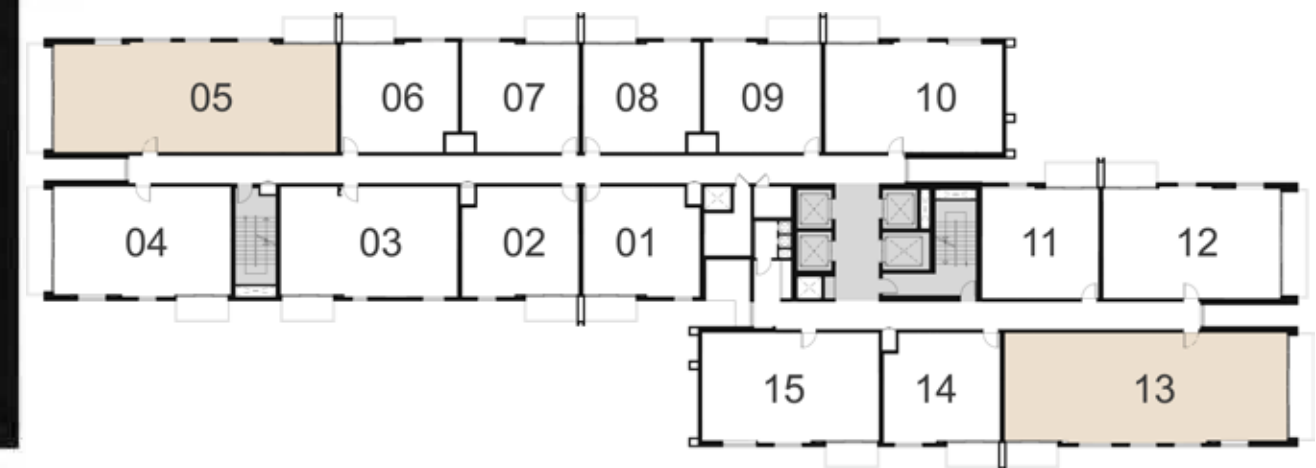


Betterhomes.



1. All dimensions are in imperial and metric, and measured to structural elements and exclude wall finishes and construction tolerances. 2. All materials, dimensions, and drawings are approximate only. 3. Information is subject to change without notice, at developer's absolute discretion. 4. Actual area may vary from the stated area. 5. Drawings not to scale. 6. All images used are for illustrative purposes only and do not represent the actual size, features, specifications, fittings, and furnishings. 7. The developer reserves the right to make revisions/ alterations, at its absolute discretion, without any liability whatsoever.

| LEVEL | UNIT NO | UNIT AREA | | BALCONY AREA | | TOTAL AREA | |
|-------|---------|-----------|---------|--------------|--------|------------|---------|
| | | SQM | SQFT. | SQM. | SQFT. | SQM. | SQFT. |
| 1-15 | UNIT 05 | 132.19 | 1422.88 | 16.98 | 182.77 | 149.17 | 1605.65 |
| | UNIT 13 | 132.24 | 1423.42 | 16.66 | 179.33 | 148.90 | 1602.75 |
| 16-18 | UNIT 05 | 132.21 | 1423.10 | 16.77 | 180.51 | 148.98 | 1603.61 |
| | UNIT 13 | 132.27 | 1423.74 | 16.54 | 178.04 | 148.81 | 1601.78 |



Betterhomes.



1. All dimensions are in imperial and metric, and measured to structural elements and exclude wall finishes and construction tolerances. 2. All materials, dimensions, and drawings are approximate only. 3. Information is subject to change without notice, at developer's absolute discretion. 4. Actual area may vary from the stated area. 5. Drawings not to scale. 6. All images used are for illustrative purposes only and do not represent the actual size, features, specifications, fittings, and furnishings. 7. The developer reserves the right to make revisions/ alterations, at its absolute discretion, without any liability whatsoever.

DUBAI HILLS
ESTATE

PARK HEIGHTS I

دبي هيلز
استيت

بارك هايٲس I

Betterhomes.

Rated 'Excellent' on  Trustpilot



Head Office

Vision Tower 42nd floor, Business Bay, Dubai

Motor City Office

Control Tower, office 2101, Motor City, Dubai

Dubai Marina Office

Marina Plaza, office 1901, Dubai Marina, Dubai

Abu Dhabi Office

Block D1, Al Zeina, Al Raha Beach, Abu Dhabi

T. +971 4 409 0998 | E. offplan@bhomes.com

bhomes.com

