

Betterhomes.

Dubai Creek Harbour

CREEK BEACH

ORCHID

EMAAR

THE WORLD OF TOMORROW

Dubai Creek Harbour is an ultra-modern and stylish neighbourhood situated along the historic Dubai Creek.

Designed with pedestrian-friendly streets, Dubai Creek Harbour offers convenient connections between the neighbourhood centre and a viable mix of retail, business, recreation, parks, open spaces, and community facilities, all within walking distance.



10 Mins from
Burj Khalifa

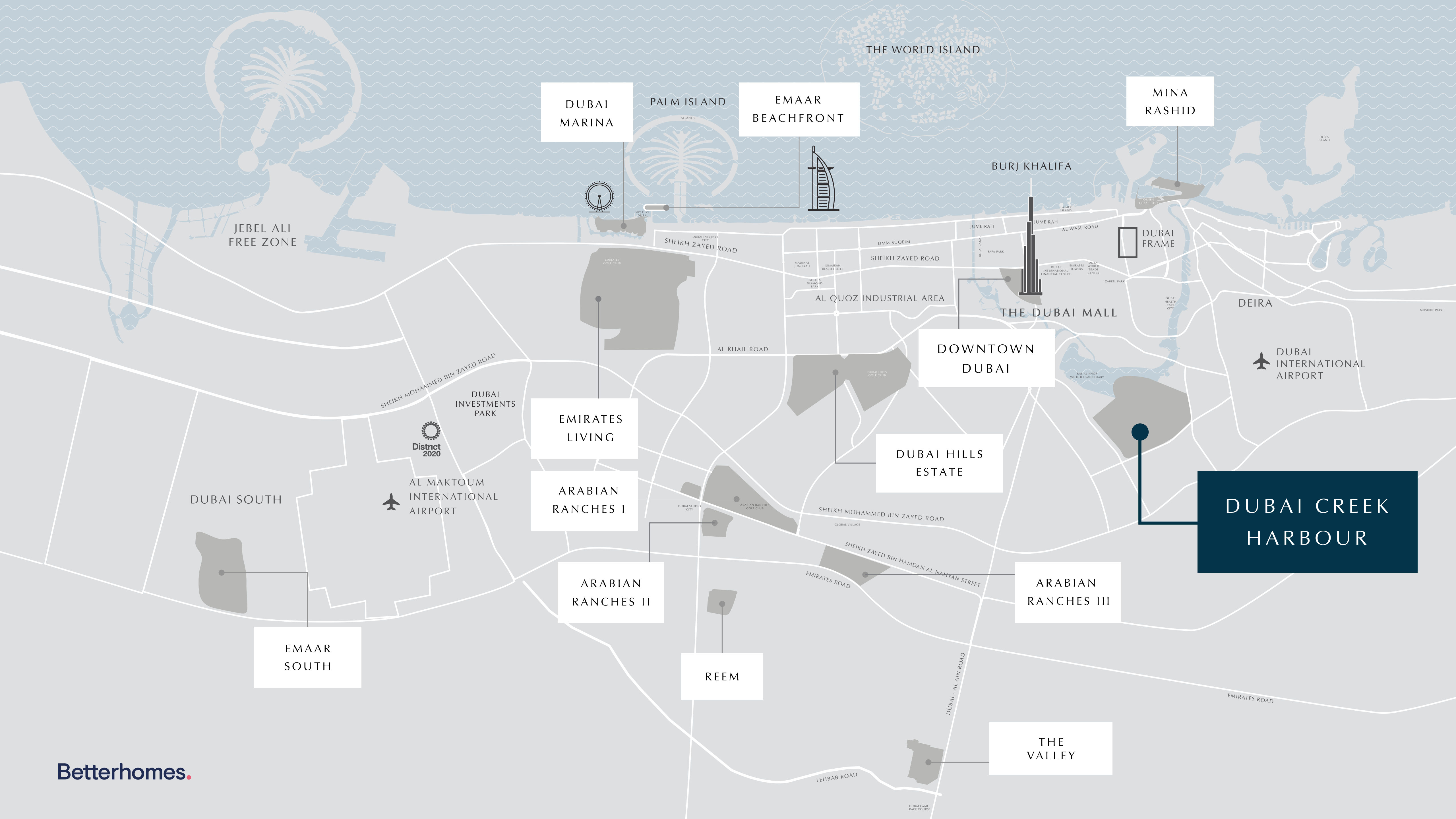


15 Mins from
Dubai Int'l Airport



Wildlife Sanctuary
Home of Pink Flamingos





DUBAI
MARINA

PALM ISLAND

EMAAR
BEACHFRONT

THE WORLD ISLAND

MINA
RASHID

JEBEL ALI
FREE ZONE

BURJ KHALIFA

DUBAI
FRAME

THE DUBAI MALL

DOWNTOWN
DUBAI

DEIRA

DUBAI
INTERNATIONAL
AIRPORT

EMIRATES
LIVING

ARABIAN
RANCHES I

DUBAI HILLS
ESTATE

DUBAI CREEK
HARBOUR

DUBAI SOUTH

AL MAKTOUM
INTERNATIONAL
AIRPORT

ARABIAN
RANCHES II

REEM

ARABIAN
RANCHES III

EMAAR
SOUTH

THE
VALLEY

CREEK BEACH

Creek Beach is Dubai’s first-of-its-kind urban beach in the middle of Dubai Creek Harbour. Located along the historic Dubai Creek, Creek Beach is conceived to afford you the ultimate family-friendly retreat. From 700 metres of pristine white sands to the infinity pool and spectacular sunset views, this is paradise reborn.



Breathtaking
Sunset Views



Creek Marina
Yacht Club



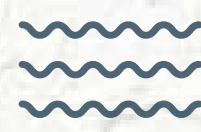
World-Class
Dining & Shopping
Destinations



Socialise At
Creek Promenade



Vibrant
Inner Plaza



Proximity to
a 700-Metre Beach



ORCHID AT CREEK BEACH

Your Idyllic Creekside Life Awaits

Nestled in the heart of a family-focused community, Orchid comprises exquisitely designed apartments and sophisticated penthouses.

Situated just footsteps from Creek Beach, Orchid offers residents the very best of relaxed creekside living, along with a vibrant array of shopping, dining and family-friendly leisure experiences on the doorstep.



• HAPPY PANS •

EXACTLY WHERE YOU'RE MEANT TO BE

Perfectly positioned at the heart of a vibrant, family-focused community, Orchid boasts a wide array of dining, retail, leisure, and recreational amenities on the doorstep.



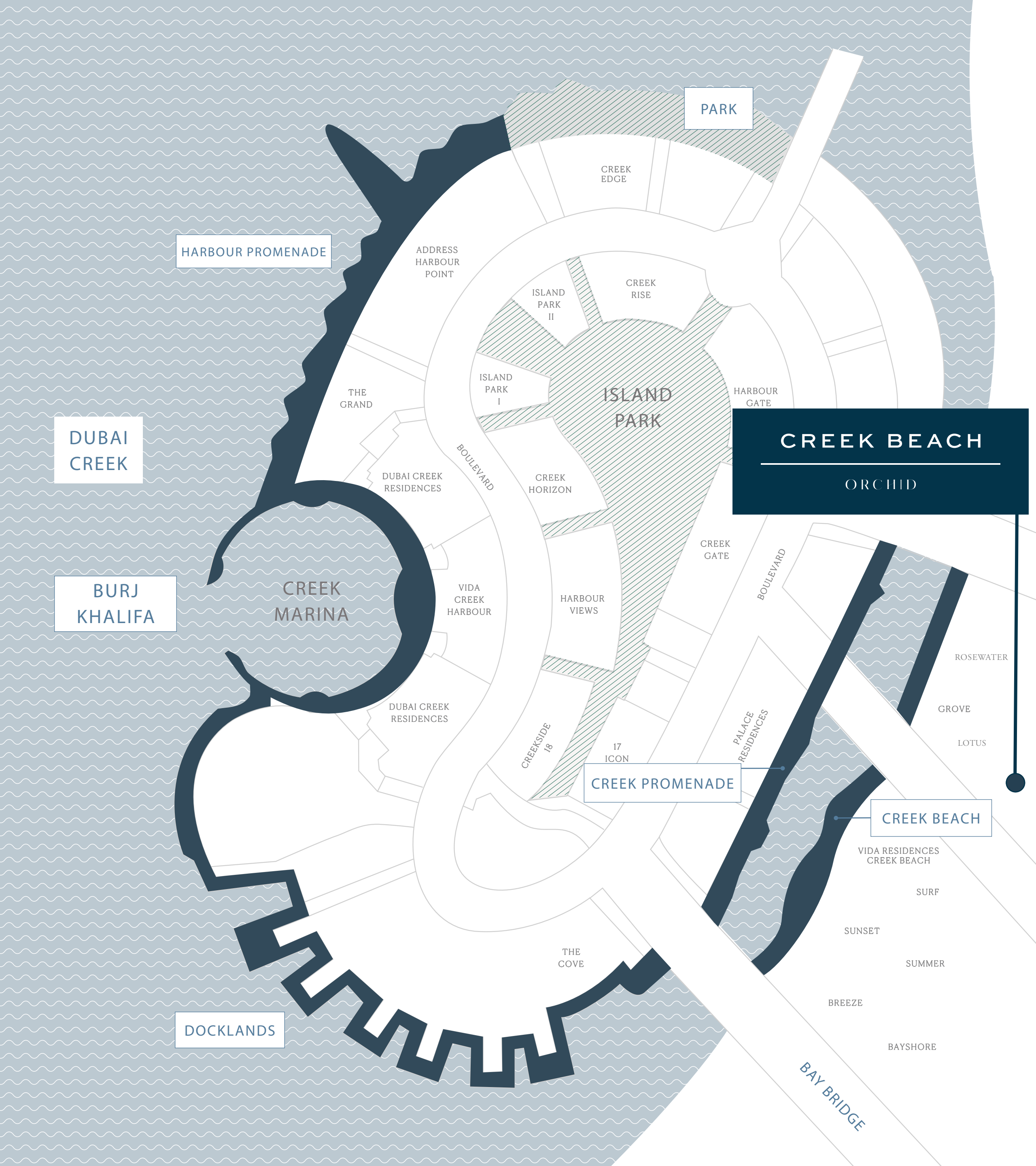
X Minutes
walk to Creek Beach



X Minutes
walk to Creek
Promenade



X Minutes
walk to Vida Creek
Harbour





LIVE LIFE TO THE FULL

Orchid’s inspired array of apartments and penthouses perfectly blend luxury, comfort and tranquillity.

Each beautifully designed home is an urban residential haven where families can enjoy a truly fulfilling lifestyle amidst a thriving community.

Orchid at Creek Beach

FEEL TRULY AT HOME

Positioned at the centre of a vibrant recreational hub,

Orchid is where you and your family can feel truly at home
– immersed in a lifestyle of convenience and contentment,
with everything you need just moments away.







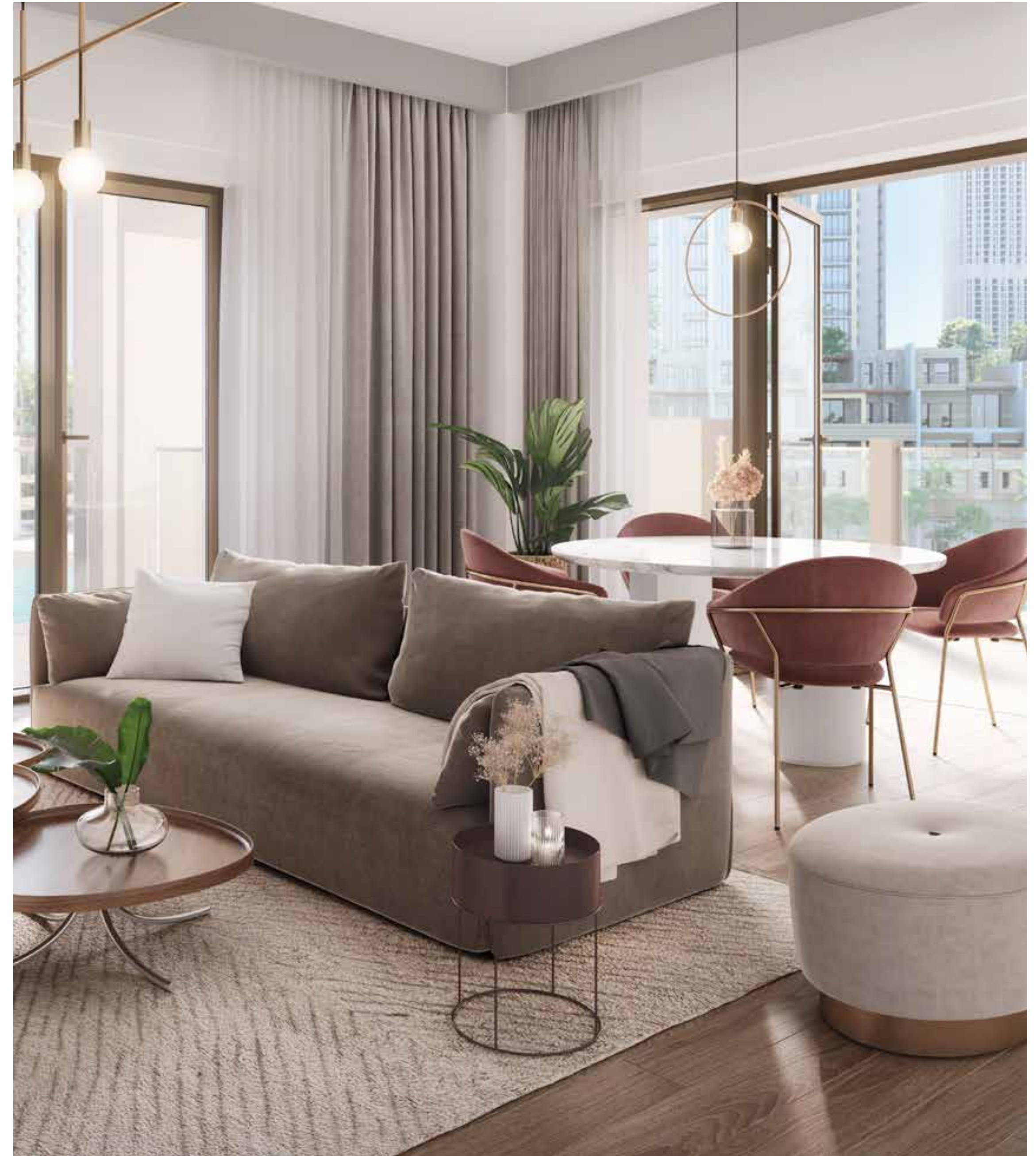
Interiors

DESIGNED FOR YOUR LIFESTYLE

Orchid's exquisite living spaces combine sophisticated yet simplistic design aesthetics with tasteful architectural touches, ensuring each residence strikes the perfect balance between elegance, comfort and practicality.

STYLISH LIVING SPACES FOR MODERN LIFESTYLES

Modern and refined 1, 2 & 3-bedroom apartments and
sophisticated 4-bedroom penthouses.







STRIKE THE RIGHT BALANCE, EVERY DAY

With family-friendly amenities, outstanding dining experiences, and shopping destinations on the doorstep, Orchid offers residents everything they need for a perfectly balanced lifestyle.



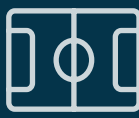
Community Pool
& Kids Pool*



Barbecue
Facilities



Fully Equipped
Gym



Multi-Purpose
Room



Town
Centre



Outdoor
Play Area

CREEK PROMENADE

Relax, unwind and enjoy quality time with family and friends as you dine and socialise at Dubai's newest hotspot.



Vibrant Waterfront
Destination



Licensed Bars &
Restaurants



Gourmet Dining
Options





Nearby Attractions

CREEK MARINA

Find the perfect balance between urban life and waterfront tranquility at Creek Marina.



Creek Marina
Yacht Club



Interactive Art
Installations



Near Central
Park



Gourmet Dining
Options




Waterfront
Promenade



Wi-Fi
Hotspots

CENTRAL PARK


Central Park is the focal point of future-ready island living. Surrounded by Creek Island’s breath-taking, contemporary, residential buildings – Central Park offers residents a tranquil retreat for relaxation, world-class amenities for enjoyment, and wide-open spaces for boundless recreation.



Verdant Open Spaces



Interactive Water Feature



Amphitheatre



Picturesque Desert Garden



Kids' Playground



Fitness Plaza & Skate Park



GLOBAL LIFESTYLE DEVELOPER

An undisputed leader in the global real estate market, Emaar has grown over the years to become the largest real estate developer outside of mainland China. You will be investing with one of the most respected brands in the world.

NET PROFIT

AED

3.8BN

REVENUE

AED

28.27BN

MARKET CAP

AED

40BN

AS OF 31 DECEMBER 2021

RESIDENTIAL UNITS
DELIVERED

81,600+

RESIDENTIAL UNITS
UNDER DEVELOPMENT

35,200+



EMAAR

Betterhomes.

Rated 'Excellent' on ★ Trustpilot



Head Office

Vision Tower 42nd floor, Business Bay, Dubai

Motor City Office

Control Tower, office 2101, Motor City, Dubai

Dubai Marina Office

Marina Plaza, office 1901, Dubai Marina, Dubai

Abu Dhabi Office

Block D1, Al Zeina, Al Raha Beach, Abu Dhabi

T. +971 4 409 0998 | E. offplan@bhomes.com

bhomes.com