



ADDRESS  
RESIDENCES  
JUMEIRAH  
RESORT + SPA

RESIDENCES AND  
SERVICED APARTMENTS







*Jumeirah Beach Residence*

Draped by the Arabian Gulf on one side and the avant-garde Dubai cityscape on the other, Jumeirah Beach Residence (JBR) is a haven for connoisseurs of beachfront luxury from all around the world. Its present-day reputation as Dubai's premier resort destination is preceded by a distinguished history as one of the primary hubs of trade, pearl diving and fishing along the Gulf coast.

Spell-binding views of sun-kissed shores beckon from an exceptional array of world-class restaurants, spas and entertainment venues across the scenic coastline. Seamless connectivity to several of the city's most iconic attractions and commercial centres, from Dubai Marina to Downtown Dubai, reinforces Jumeirah Beach Residence's allure among residents and travellers who desire nothing less than the exceptional, whether for business or leisure.



*'La Dolce Vita'  
inspired interiors*



*Secure and vibrant  
family environment*



*Luxurious amenities  
and facilities*



*Captivating dining  
concepts*





*A bold new superlative in upscale hospitality*

Part of Emaar Hospitality Group, Address Hotels + Resorts brings an inspiring vision of premium luxury to life across an exquisite and ever-growing portfolio of bespoke properties in the GCC and Africa.

With their skyline-defining architecture, artfully curated interiors and matchless amenities and services, every destination encapsulates benchmark-defining standards with brilliant authenticity across exceptionally appointed stays and residences, new-age dining experiences and an acclaimed approach to wellness.

It's where contemporary style and classic elegance meet, whether in the heart of Downtown Dubai or Dubai Marina in the UAE, or in Makkah, Saudi Arabia.

Address Hotels + Resorts. Where life happens.





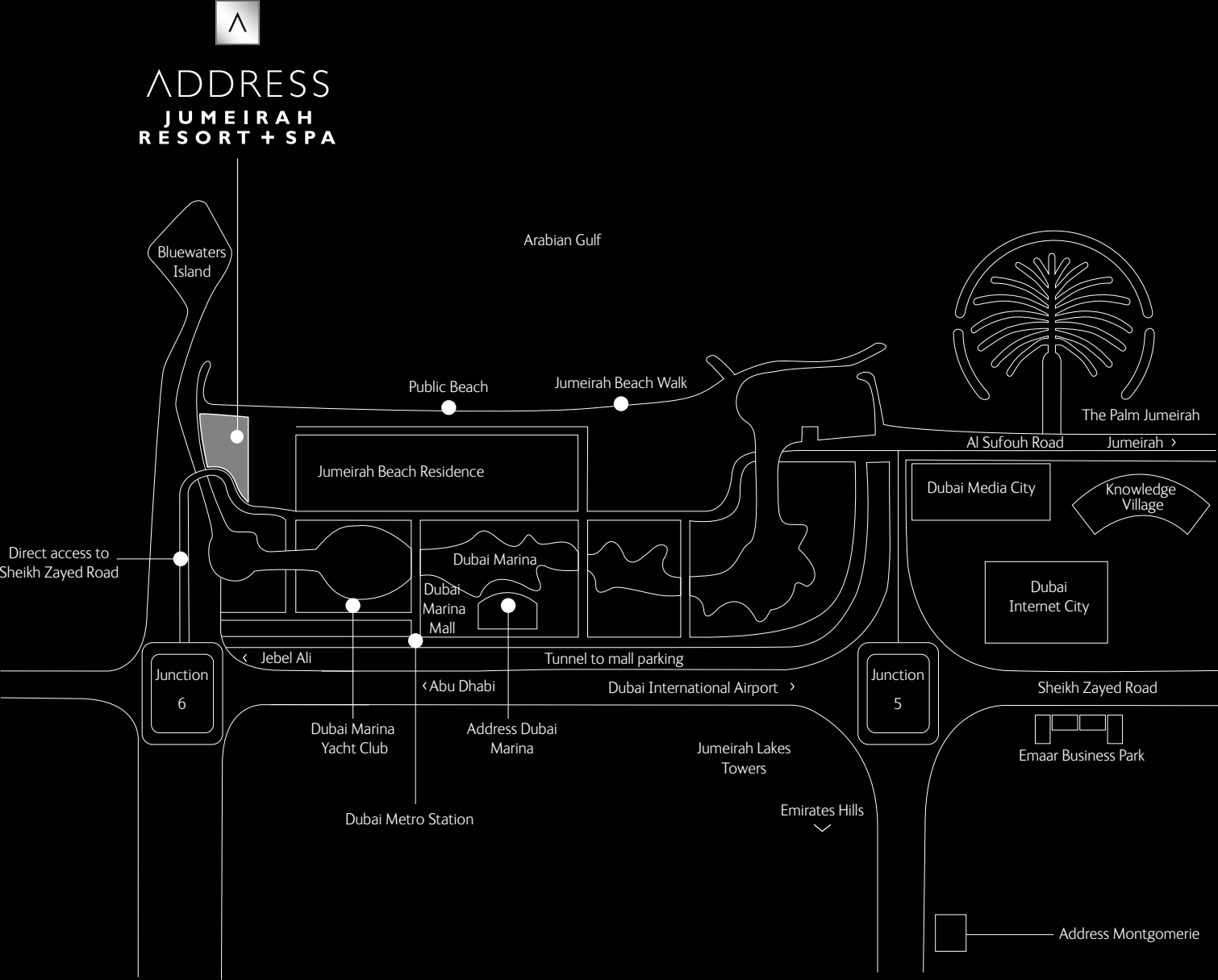
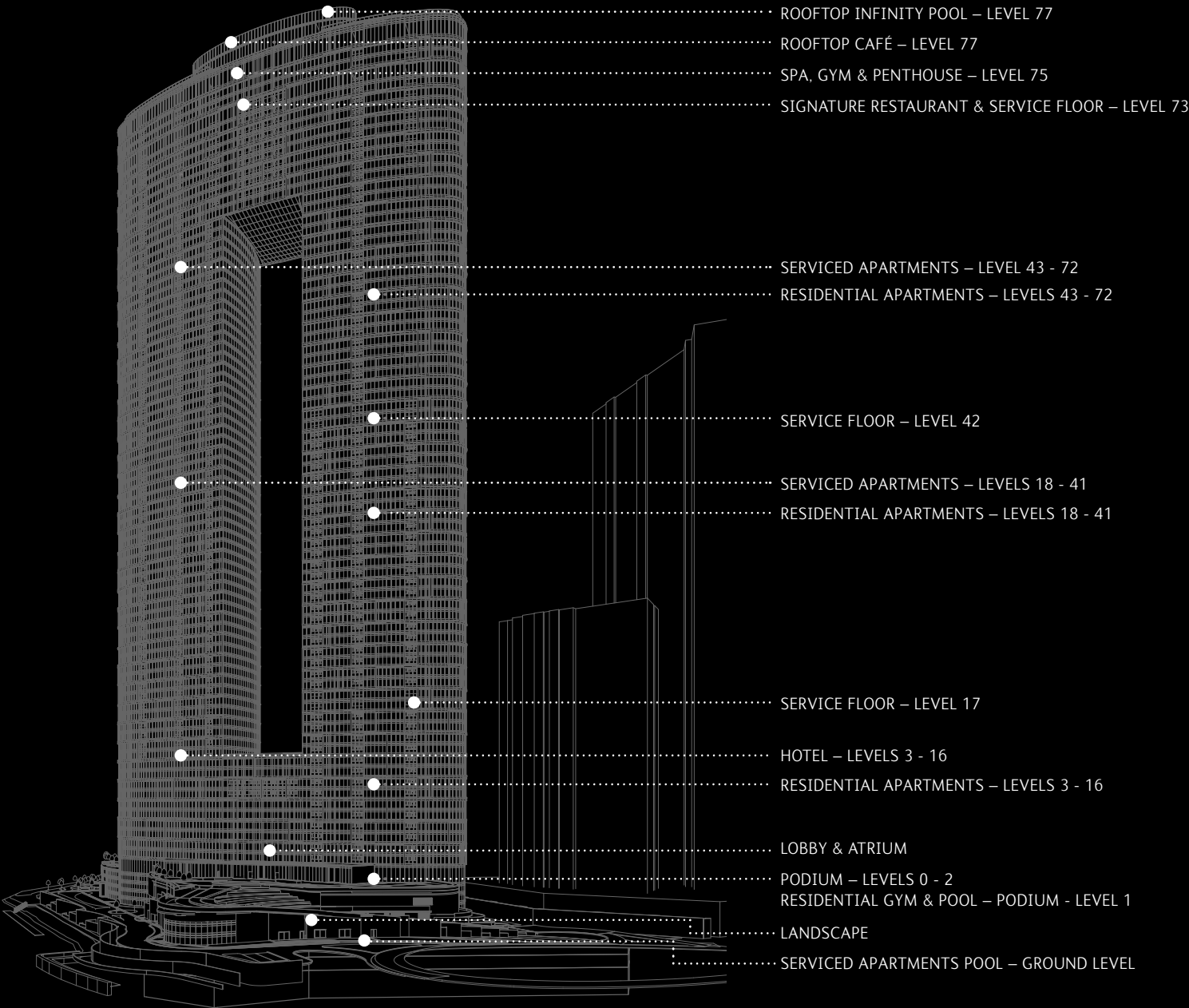
*The pinnacle of beachfront living in  
Jumeirah Beach Residence*

A glittering spectacle rising above the scintillating promenades of Jumeirah Beach Walk, Address Jumeirah Resort + Spa is where the invigorating energy of the surrounding metropolis uplifts the allure of a premium resort-style lifestyle.

Whether witnessed across an exceptional choice of world-class stays, imagination-capturing dining concepts and new-age wellness journeys, or from the magnificent rooftop infinity pool, the brilliant gold and blue coastline is more than just a sight to behold. Guests and residents can also immerse themselves in its soothing serenity with 100 metres of direct beach access, or a short and refreshing amble to surrounding attractions, including The Beach and Dubai Marina Walk.

Welcome to a new era of breathtaking beachfront living.







Prime Neighbourhood and Amenities

LOCATION: Whether in terms of the awe-inspiring beauty of Jumeirah Beach or effortless access to the city’s other popular districts and destinations, Address Jumeirah Resort + Spa enjoys an exceptional location in one of Dubai’s most coveted districts. It is built on the very last land plot on Jumeirah Beach Walk, making it an even more strategic investment opportunity. The area is home to the world’s largest man-made marina – Dubai Marina, one of the most visited Dubai attractions – The Walk at Jumeirah Beach Residence, The Beach, and Ain Dubai, the world’s largest observation wheel. Several world-renowned leisure and entertainment attractions are mere minutes away via the city’s state-of-the-roads and metro infrastructure, as are many hubs of trade and commerce, including Jebel Ali, Dubai Media City, Dubai Internet City, Downtown Dubai and Dubai International Financial Centre.

NEIGHBOURHOOD: The Walk at Jumeirah Beach Residence is one of Dubai’s most popular leisure destinations with activities ranging from water sports at the open beach and sailing, to alfresco dining. Visitors can enjoy state-of-the-art entertainment at nearby shopping venues, which include a cinema, indoor games and personal care facilities. The scenic district also offers a vast selection of luxury hotels, restaurants, and an active social night life. It remains one of the busiest areas in Dubai.

ARCHITECTURE: Two 310-metre skyscrapers connected at the ground and summit via link bridges distinguish Address Jumeirah Resort + Spa in Dubai’s magnificent skyline. The structure’s oblong cylindrical form is an architectural feat that establishes the property in a league of its own, a stunning tribute to the benchmark-defining standards of Address Hotels + Resorts. The iconic 77-floor, two-tower project features the Hotel, the Serviced Apartment Tower, 'Address Residences Jumeirah Resort + Spa, Dubai', and the Residential Tower, 'The Residences Jumeirah Dubai, Managed by Address'.

INTERIORS: Inspired by the theme of 'La Dolce Vita', the residences have been meticulously curated to incorporate the charming serenity of the mesmeric beachfront with contemporary elegance. A soothing spectrum of pastel and light blue shades are complemented by refreshing mediums and soft textures as well as a tasteful selection of art that amplifies the warm, welcoming and refined appeal of every home.

LIVING: Soothing colour palettes and plush furnishings enhance the sense of space and comfort across the living spaces. Striking accents in varying blues resonate the picturesque surroundings of the elite residences, while ultramodern amenities assure a superior standard of convenience and entertainment.

DINING: From the equipment to the flooring, every detail of the kitchen and dining spaces has been thoughtfully considered to optimise both visual appeal and functional ease and efficiency. State-of-the-art innovations from the world’s finest brands support creative culinary expression, while a superior selection of fixtures and furnishings make every dining experience a treat to look forward to.

BEDROOMS: As private spaces for rest, relaxation and recreation, the bedrooms are meticulously curated to extend the resort-

Features

- 2 iconic towers
- 77 floors (310 metres in height)
- 217 hotel rooms and suites
- 443 serviced apartments
- 478 residential apartments
- Rooftop infinity pool on level 77
- Direct beach access

inspired design theme of the residences, while making room for customisations that would add a uniquely personal touch to various aspects, such as the arrangement, colour scheme and decorations.

BATHROOMS: A superior and carefully considered selection of fittings and furnishings complements the subtle aesthetic references to the serene beachside location of the property, effortlessly endowing the bathrooms with a reassuring aura of refinement.

Services

- Dedicated and knowledgeable concierge
- Business support services
- 24-hour In-room Dining
- 24-hour Fitness Centre
- Open-air swimming pool
- Relaxation areas
- Complimentary high-speed wireless Internet





### Restaurants and Lounges

THE RESTAURANT AT ADDRESS JUMEIRAH RESORT + SPA: A one-of-a-kind, award-winning concept, The Restaurant at Address Jumeirah Resort + Spa presents delectable interpretations of international cuisine in an ambience that resonates the warm and welcoming allure of a refined home all through the day. The signature dining venue is modelled after a luxury apartment and features an array of interconnected communal and private dining spaces, such as The Living Room, The Dining Room, and Library.

BRAZILBANESE: Immerse yourself in the spirit of joie de vivre with a splendid fusion of South American and Middle Eastern art, music and cuisine at Brazilbanese. Savour tantalising Lebanese and Brazilian light bites, desserts, beverages and exotic fruits with friends and family amidst a choice of vibrant, nature-inspired spaces that include a dining lounge and terrace.

LOBBY LOUNGE: Centrally located near the tower entrance, the Lobby Lounge is always a welcoming retreat, whether for a casual rendezvous, a business lunch or some delectable indulgence. Choose from a tempting assortment of light bites and beverages as you admire the lobby's aesthetics and beach vistas from floor-

to-ceiling windows.

BEACH CAFÉ & GRILL: Take a walk along the scenic beach, immerse yourself in its pristine waters or admire their waves from the comfort of your own sun lounger as you indulge in freshly barbecued delicacies and invigorating blends of signature libations at Beach Café & Grill.

LEVEL 77: Surrender to the height of beachfront luxury at the summit of the skyscrapers at level 77. Revel in awe-inspiring perspectives of Jumeirah Beach from VIP gazebos, elegant indoor dining areas, a stunning cabana terrace or the exquisite infinity pool while talented chefs entice your palate with masterful expressions of global cuisine.

### Relax and Rejuvenate

A premier destination for avant-garde wellness experiences, The Spa at Address Jumeirah Resort + Spa presents journeys that inspire a wholesome and lasting sense of well-being. This is achieved through the skilful combination of exclusive nature-inspired products as well as new-age techniques and technologies. Highly qualified therapists help curate a journey that is specifically suited to your wellness needs and aspirations, while a variety of exclusive amenities, including a sauna, steam room and outdoor cabana offer additional opportunities for rest and revival.

With a wide range of cutting-edge equipment and a dedicated team of certified personal trainers, the Fitness Centre is open 24 hours a day all through the week for guests, visitors and residents who desire an active lifestyle tailored to their schedule and preferences.

### Meetings and Events

For occasions that merit the highest standards of finesse, Address Jumeirah Resort + Spa delivers without exception. An exclusive arena for corporate, social and personal gatherings, The Academy features a palette of sophisticated event venues, including a Library, Majlis and Show Kitchen where the talents of world-class chefs and beverage mixologists can be witnessed live from an array of elegant dining spaces. A private meeting room, replete with the latest audiovisual and teleconferencing technologies, is also available for confidential meetings. From planning and catering to décor and technical support, a dedicated events team is always at hand to offer seamless support and ensure every occasion exceeds expectations.

PRESIDENTIAL SUITE - BEDROOM



GUEST ROOM



GUEST ROOM BATHROOM

## Address Jumeirah Resort + Spa Guest Rooms

The privilege of staying in one of the most exotic resort destinations in the world is innovatively expressed across the guest rooms and suites at Address Jumeirah Resort + Spa. Stunning vistas of Jumeirah Beach are matched by avant-garde appointments, in-room automation and other advanced amenities across the deluxe and twin rooms, one- and two-bedroom suites, and an exceptionally spacious Presidential Suite.





*Address Residences Jumeirah  
Resort + Spa, Dubai  
443 Serviced Apartments*

The essence of breathtaking beachfront living radiates through every aspect and nuance of the 443 Serviced Apartments at Address Residences Jumeirah Resort + Spa, from the soothing colour palette to the aqua-inspired accents.

This is delightfully complemented by seamless access to an unparalleled array of state-of-the-art amenities, including the hotel swimming pool located at the ground level, hotel Fitness Centre on level 75, and accessible on a commercial basis, the hotel spa, in-house dining and hotel's housekeeping services.

ONE-BEDROOM SERVICED APARTMENTS  
From 59sqm to 107sqm / 640sqft to 1,155sqft

TWO-BEDROOM SERVICED APARTMENTS  
From 110sqm to 187sqm / 1,181sqft to 2,021sqft

THREE-BEDROOM SERVICED APARTMENTS  
From 177sqm to 183sqm / 1,908sqft to 1,973sqft

FOUR-BEDROOM SERVICED APARTMENTS  
From 291sqm to 338sqm / 3,128sqft to 3,641sqft

FIVE-BEDROOM SERVICED APARTMENTS  
466sqm / 5,018sqft



One-bedroom Serviced Apartments

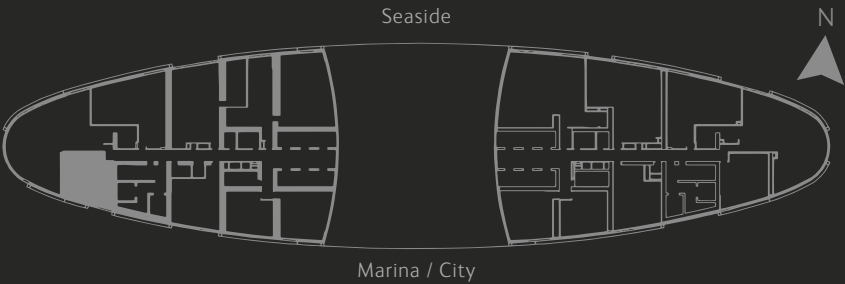
Available in a choice of five well-planned layouts, the one-bedroom serviced apartments are chic dwellings that impress in terms of both aesthetics and comfort. In addition to a bedroom with an attached bathroom, these apartments also include a living room with a dining area, an open kitchen, a powder room as well as a balcony in some layouts.

Three of the one-bedroom serviced apartments can be found on the highest levels of the property. With their especially vast balconies, these variants offer a distinctive vantage point to admire spectacular vistas of the city and Dubai Marina.

Features

- 59sqm to 107sqm / 640sqft to 1,155sqft
- 201 one-bedroom serviced apartments
- Maximum occupancy: two adults and one child under 12 years
- Views of the sea: Types S1G, S1D (partial sea view)
- Views of marina / city: Types S1A, S1C, S1F
- En-suite bathroom in every bedroom
- Furnished and fitted apartments with guest room management system, touchpad switches, branded toilet accessories and fittings
- Fully-equipped open kitchen
- One car parking space for every apartment

ONE-BEDROOM SERVICED APARTMENT - TYPE S1A  
LEVELS: 18 to 41, 43 to 72



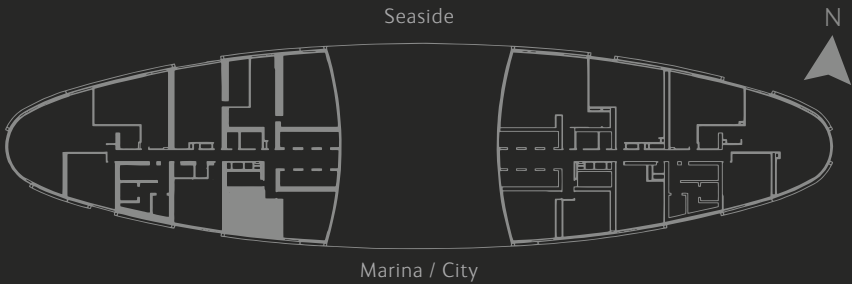
	SELLABLE AREA	
	SQ.M	SQ.FT
SUITE AREA	57	611 - 615
BALCONY AREA	08	89
TOTAL AREA	65	700 - 705

Disclaimer: 1. All materials, dimensions and drawings are approximate. 2. Information is subject to change without notice. 3. Actual suite area may vary from the stated area. 4. Drawings not to scale. 5. The developer reserves the right to make revisions/alterations without any liability whatsoever.



ONE-BEDROOM SERVICED APARTMENT - TYPE S1C

LEVELS: 18 to 41, 43 to 62

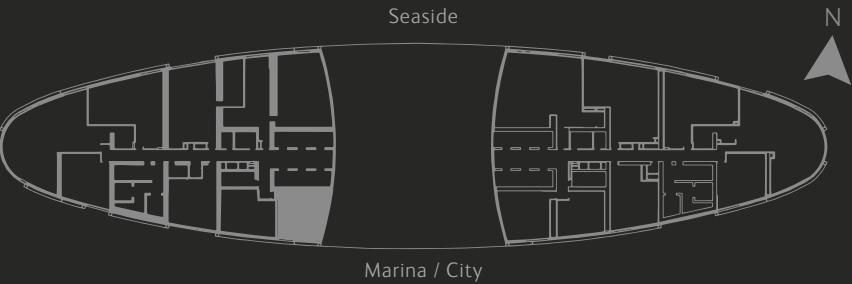
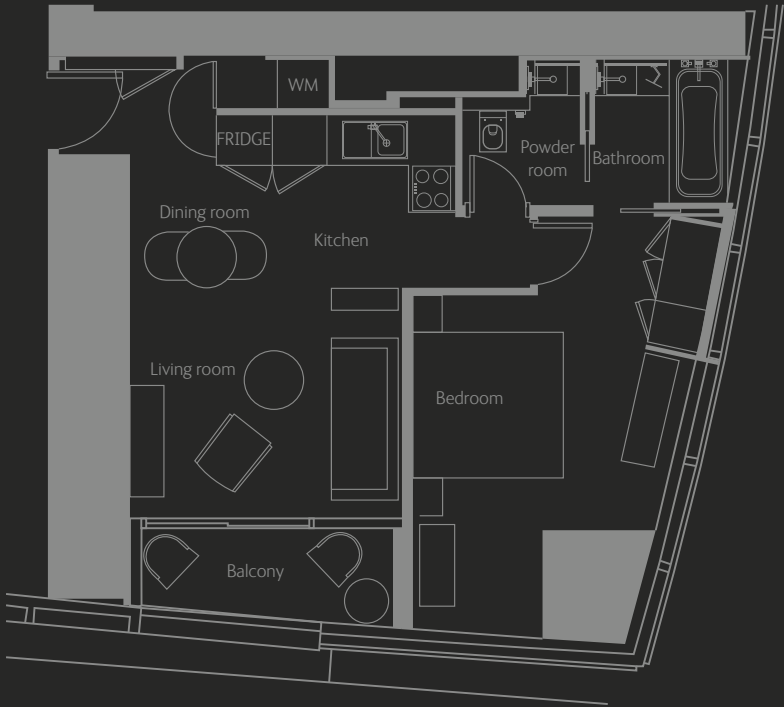


	SELLABLE AREA	
	SQ.M	SQ.FT
SUITE AREA	59	637 - 640
TOTAL AREA	59	637 - 640

Disclaimer: 1. All materials, dimensions and drawings are approximate. 2. Information is subject to change without notice. 3. Actual suite area may vary from the stated area. 4. Drawings not to scale. 5. The developer reserves the right to make revisions/alterations without any liability whatsoever.

ONE-BEDROOM SERVICED APARTMENT - TYPE S1D

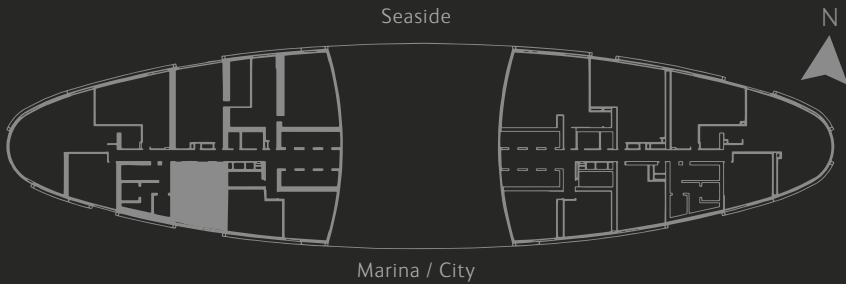
LEVELS: 18 to 41, 43 to 62



	SELLABLE AREA	
	SQ.M	SQ.FT
SUITE AREA	64 - 65	694 - 703
BALCONY AREA	7	71 - 73
TOTAL AREA	71 - 72	765 - 775

Disclaimer: 1. All materials, dimensions and drawings are approximate. 2. Information is subject to change without notice. 3. Actual suite area may vary from the stated area. 4. Drawings not to scale. 5. The developer reserves the right to make revisions/alterations without any liability whatsoever.

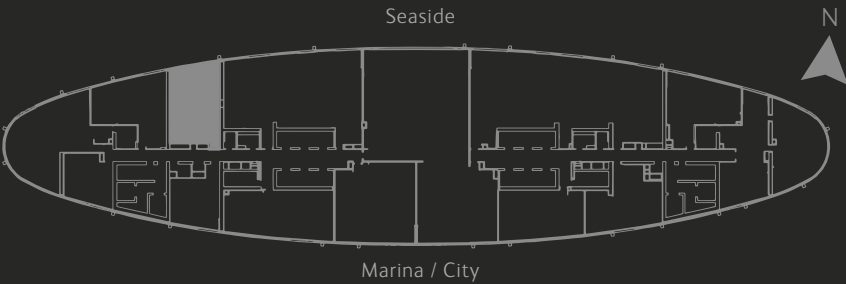
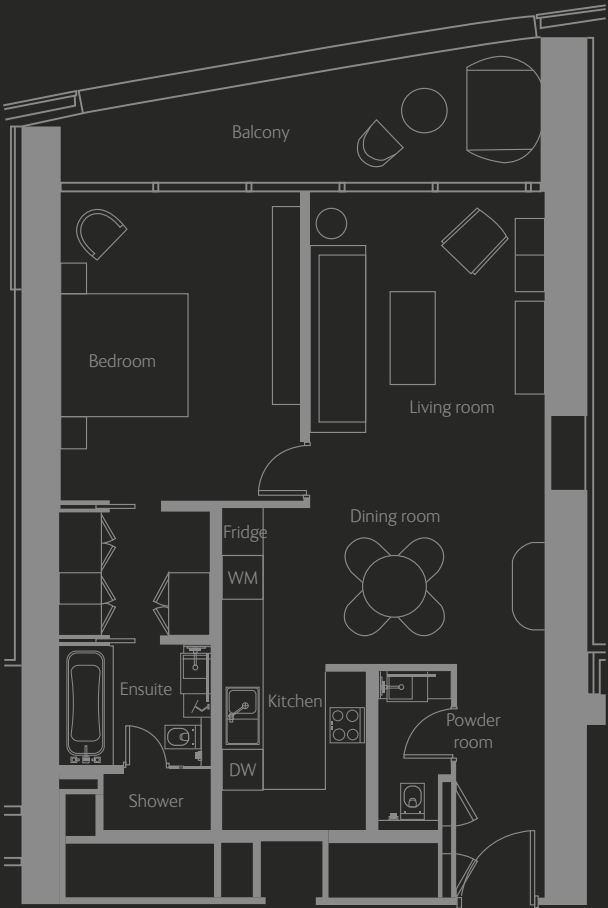
ONE-BEDROOM SERVICED APARTMENT - TYPE S1F  
LEVELS: 18 to 41, 43 to 72



SELLABLE AREA		
	SQ.M	SQ.FT
SUITE AREA	68 - 75	717 - 808
BALCONY AREA	0 - 7	0 - 78
TOTAL AREA	75	795 - 808

Disclaimer: 1. All materials, dimensions and drawings are approximate. 2. Information is subject to change without notice. 3. Actual suite area may vary from the stated area. 4. Drawings not to scale. 5. The developer reserves the right to make revisions/alterations without any liability whatsoever.

ONE-BEDROOM SERVICED APARTMENT - TYPE S1G  
LEVELS: 68 to 72



SELLABLE AREA		
	SQ.M	SQ.FT
SUITE AREA	91	980
BALCONY AREA	16	176
TOTAL AREA	107	1155

Disclaimer: 1. All materials, dimensions and drawings are approximate. 2. Information is subject to change without notice. 3. Actual suite area may vary from the stated area. 4. Drawings not to scale. 5. The developer reserves the right to make revisions/alterations without any liability whatsoever.





BEDROOM



BATHROOM

Two-bedroom Serviced Apartments

From their ornate interiors to the panoramic views they offer, the two-bedroom serviced apartments are captivating in every sense. Intelligently conceptualised across seven different layouts, these homes feature an especially generous dining area as well as a maid’s room with an attached bathroom and an additional balcony in some instances.

The variants on the upper levels are a cut above with their striking spaciousness, exquisite appointments, and especially large balconies which can easily accommodate a dining area.

Features

110sqm to 187sqm / 1,181sqft to 2,021sqft

130 two-bedroom serviced apartments

Maximum occupancy: four adults and one child under 12 years or three adults and two children under 12 years

Views of the sea: Types S2A, S2C, S2D, S2E

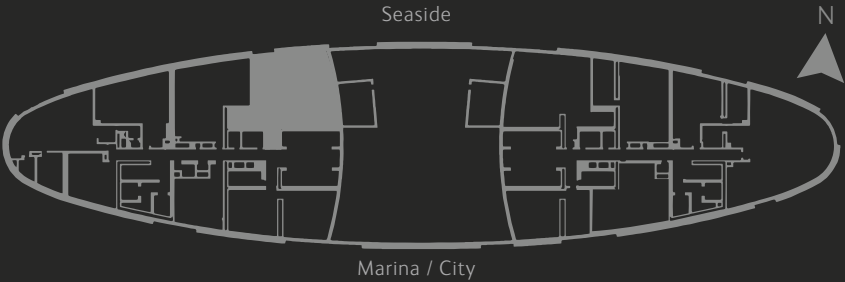
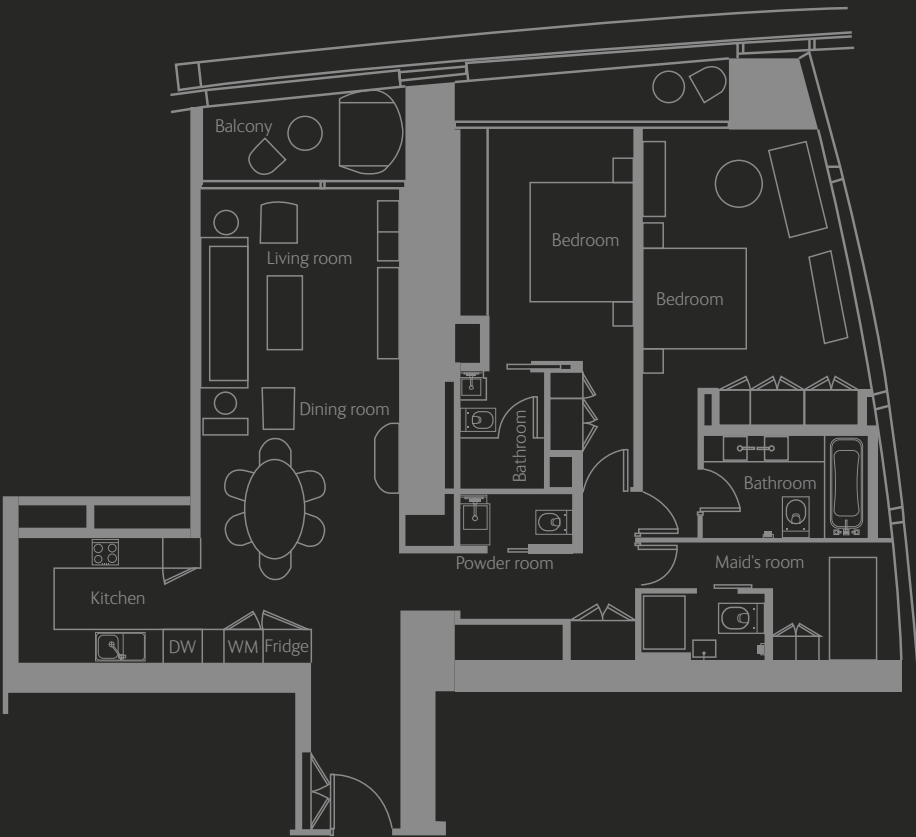
Views of marina / city: Types S2J, S2K, S2L

En-suite bathroom in every bedroom

Furnished and fitted apartments with guest room management system, touchpad switches, branded toilet accessories and fittings, and fully-equipped open kitchen

One car parking space for every apartment

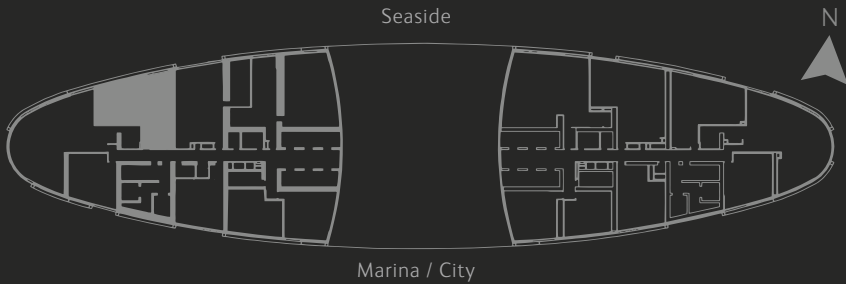
TWO-BEDROOM SERVICED APARTMENT - TYPE S2A  
LEVEL: 63



SELLABLE AREA		
	SQ.M	SQ.FT
SUITE AREA	163	1759
BALCONY AREA	21	221
TOTAL AREA	184	1981

Disclaimer: 1. All materials, dimensions and drawings are approximate. 2. Information is subject to change without notice. 3. Actual suite area may vary from the stated area. 4. Drawings not to scale. 5. The developer reserves the right to make revisions/alterations without any liability whatsoever.

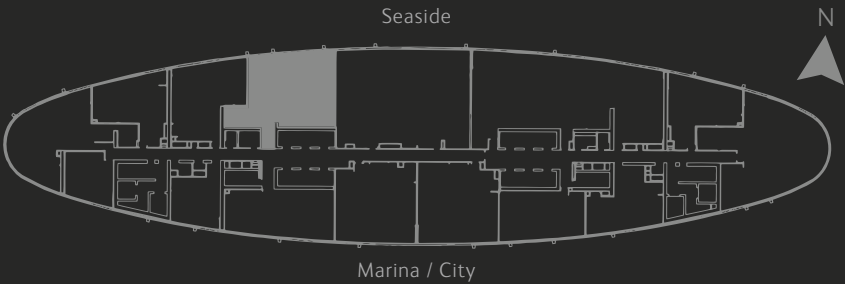
TWO-BEDROOM SERVICED APARTMENT - TYPE S2C  
LEVELS: 18 to 41, 43 to 72



SELLABLE AREA	SQ.M		SQ.FT	
SUITE AREA	99 - 100		1066 - 1072	
BALCONY AREA	10		106 - 109	
TOTAL AREA	109 - 110		1171 - 1181	

Disclaimer: 1. All materials, dimensions and drawings are approximate. 2. Information is subject to change without notice. 3. Actual suite area may vary from the stated area. 4. Drawings not to scale. 5. The developer reserves the right to make revisions/alterations without any liability whatsoever.

TWO-BEDROOM SERVICED APARTMENT - TYPE S2D  
LEVELS: 64 to 67



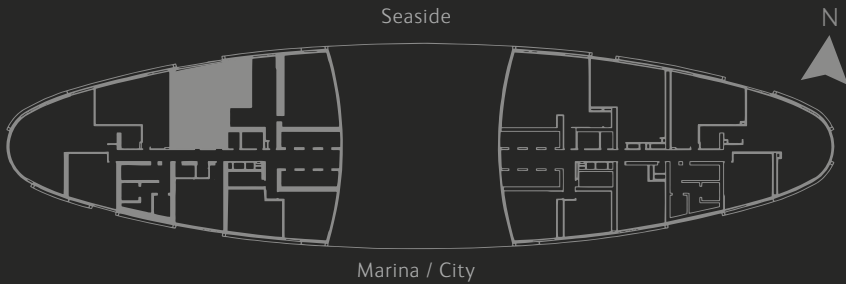
SELLABLE AREA	SQ.M		SQ.FT	
SUITE AREA	165		1777	
BALCONY AREA	22		235	
TOTAL AREA	187		2012	

Disclaimer: 1. All materials, dimensions and drawings are approximate. 2. Information is subject to change without notice. 3. Actual suite area may vary from the stated area. 4. Drawings not to scale. 5. The developer reserves the right to make revisions/alterations without any liability whatsoever.



TWO-BEDROOM SERVICED APARTMENT - TYPE S2E

LEVELS: 18 to 43 ,41 to 67

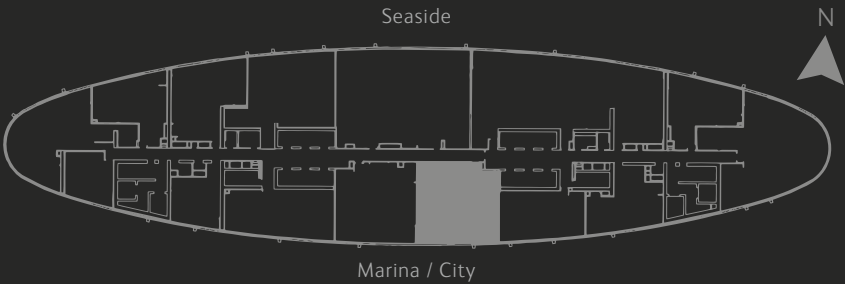


SELLABLE AREA	SQ.M		SQ.FT	
SUITE AREA	124 - 123		1330 - 1320	
BALCONY AREA	17 - 16		178 - 176	
TOTAL AREA	140 - 139		1505 - 1497	

Disclaimer: 1. All materials, dimensions and drawings are approximate. 2. Information is subject to change without notice. 3. Actual suite area may vary from the stated area. 4. Drawings not to scale. 5. The developer reserves the right to make revisions/alterations without any liability whatsoever.

TWO-BEDROOM SERVICED APARTMENT - TYPE S2J

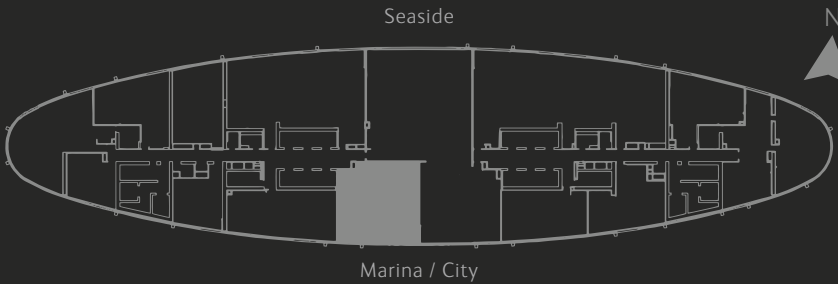
LEVELS: 64 to 67



SELLABLE AREA	SQ.M		SQ.FT	
SUITE AREA	140		1507	
BALCONY AREA	26		275	
TOTAL AREA	166		1782	

Disclaimer: 1. All materials, dimensions and drawings are approximate. 2. Information is subject to change without notice. 3. Actual suite area may vary from the stated area. 4. Drawings not to scale. 5. The developer reserves the right to make revisions/alterations without any liability whatsoever.

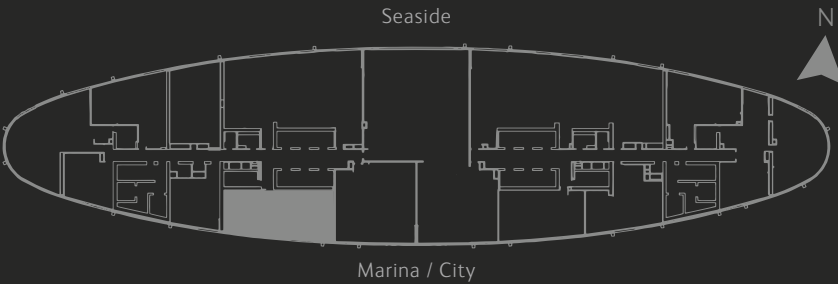
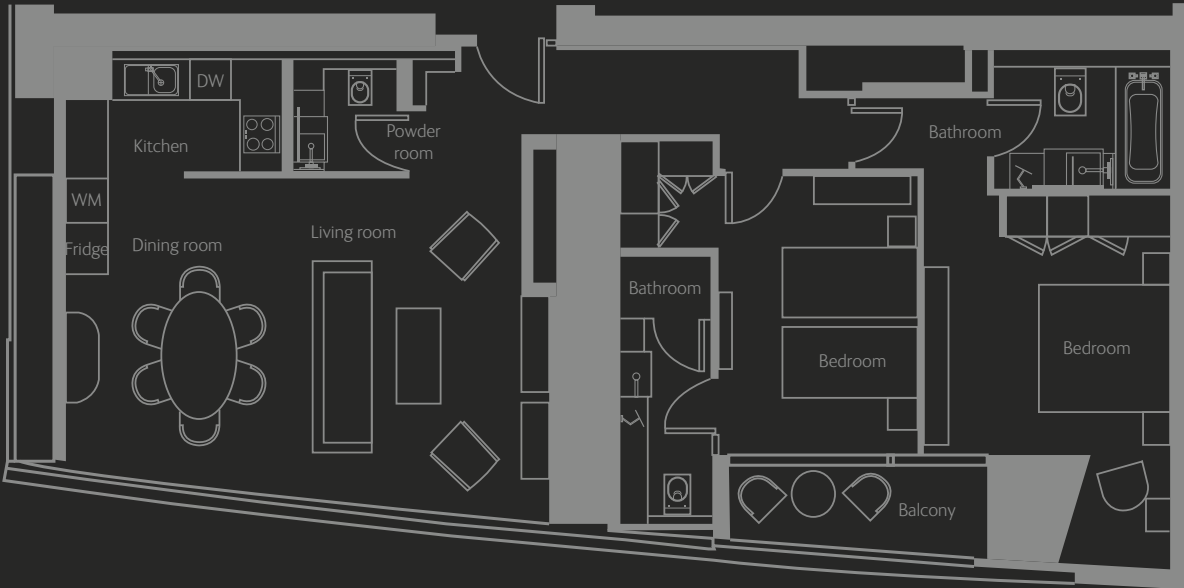
TWO-BEDROOM SERVICED APARTMENT - TYPE S2K  
LEVELS: 64 to 72



SELLABLE AREA		
	SQ.M	SQ.FT
SUITE AREA	140	1507
BALCONY AREA	26	276 - 282
TOTAL AREA	166	1783 - 1789

Disclaimer: 1. All materials, dimensions and drawings are approximate. 2. Information is subject to change without notice. 3. Actual suite area may vary from the stated area. 4. Drawings not to scale. 5. The developer reserves the right to make revisions/alterations without any liability whatsoever.

TWO-BEDROOM SERVICED APARTMENT - TYPE S2L  
LEVELS: 64 to 72



SELLABLE AREA		
	SQ.M	SQ.FT
SUITE AREA	133	1428 - 1434
BALCONY AREA	7	77
TOTAL AREA	140	1505 - 1511

Disclaimer: 1. All materials, dimensions and drawings are approximate. 2. Information is subject to change without notice. 3. Actual suite area may vary from the stated area. 4. Drawings not to scale. 5. The developer reserves the right to make revisions/alterations without any liability whatsoever.





LIVING ROOM



DINING ROOM

Three-bedroom Serviced Apartments

The three-bedroom serviced apartments are available in a choice of two variants that make inventive use of contemporary design to augment the aesthetic appeal and sense of space in every room. Both variants feature two balconies and a maid's room with an attached bathroom.

Features

177sqm to 183sqm / 1,908sqft to 1,973sqft

98 three-bedroom serviced apartments

Maximum occupancy: six adults and one child under 12 years or five adults and two children under 12 years

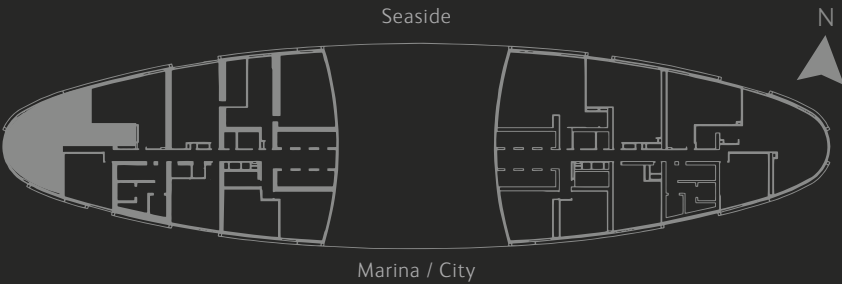
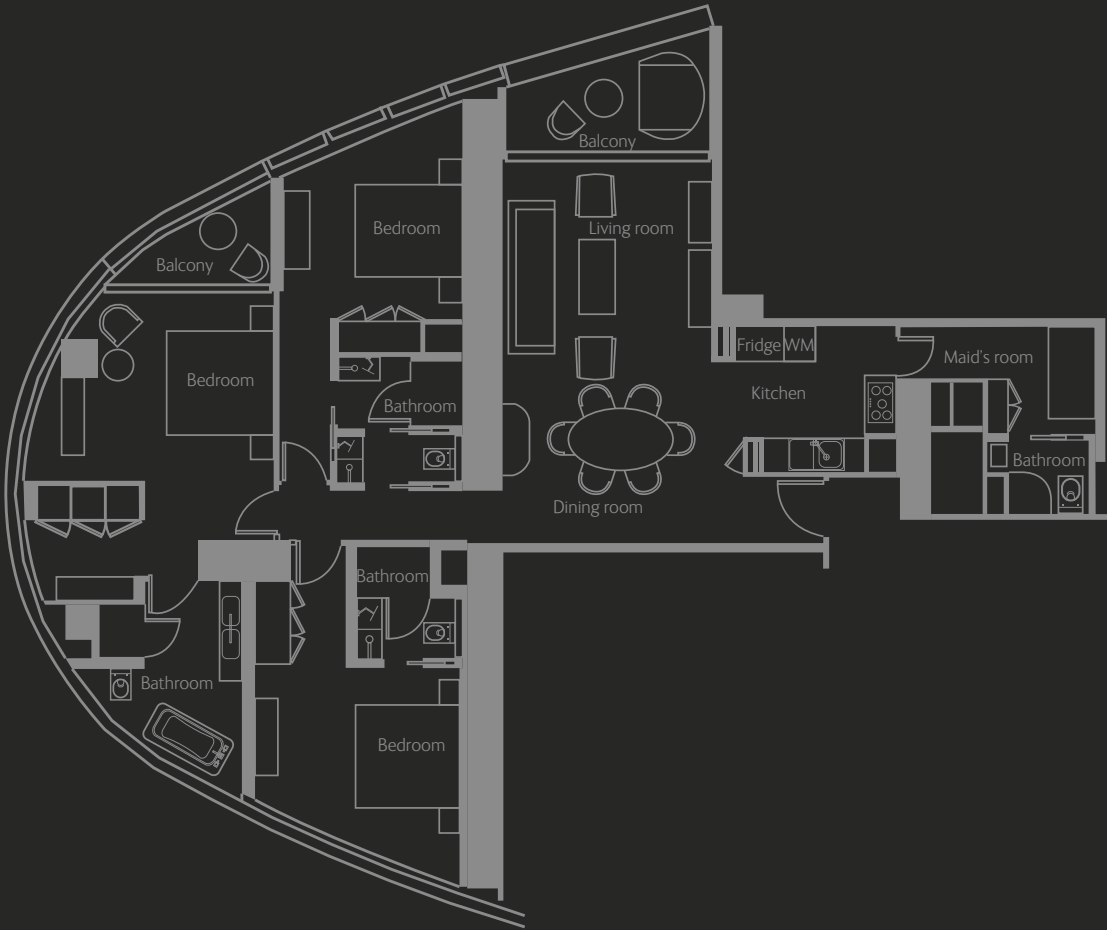
Views of the sea and marina / city: Type S3A, S3B

En-suite bathroom in every bedroom

Furnished and fitted apartments with guest room management system, touchpad switches, branded toilet accessories and fittings, and fully-equipped open kitchen

Two car parking spaces for every apartment

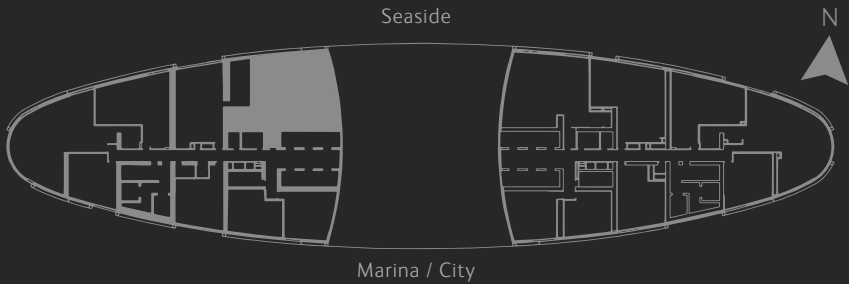
THREE-BEDROOM SERVICED APARTMENT - TYPE S3A  
LEVELS: 18 to 41, 43 to 72



SELLABLE AREA	SQ.M		SQ.FT	
SUITE AREA	162 - 163		1746 - 1757	
BALCONY AREA	14		151 - 152	
TOTAL AREA	176 - 177		1898 - 1908	

Disclaimer: 1. All materials, dimensions and drawings are approximate. 2. Information is subject to change without notice. 3. Actual suite area may vary from the stated area. 4. Drawings not to scale. 5. The developer reserves the right to make revisions/alterations without any liability whatsoever.

THREE-BEDROOM SERVICED APARTMENT - TYPE S3B  
LEVELS: 18 to 43 ,41 to 62



SELLABLE AREA	SQ.M		SQ.FT	
SUITE AREA	167 - 166		1796 - 1791	
BALCONY AREA	17 - 16		178 - 175	
TOTAL AREA	183		1973 - 1966	

Disclaimer: 1. All materials, dimensions and drawings are approximate. 2. Information is subject to change without notice. 3. Actual suite area may vary from the stated area. 4. Drawings not to scale. 5. The developer reserves the right to make revisions/alterations without any liability whatsoever.







BEDROOM



LIVING ROOM

Four-bedroom Serviced Apartments

The four-bedroom serviced apartments at Address Residences Jumeirah Resort + Spa have been brilliantly envisioned to optimise their extensive area across both private and communal spaces. Both variants are on the highest levels of the property, from levels 64 to 72, and only a few units are available of each.

The balcony in the larger variant is especially lavish, with ample seating. A walk-in closet in the master bedroom is included in this variant only.

Features

291sqm to 338sqm / 3,128sqft to 3,641sqft

Nine four-bedroom serviced apartments

Maximum occupancy: eight adults and one child under 12 years or seven adults and two children under 12 years

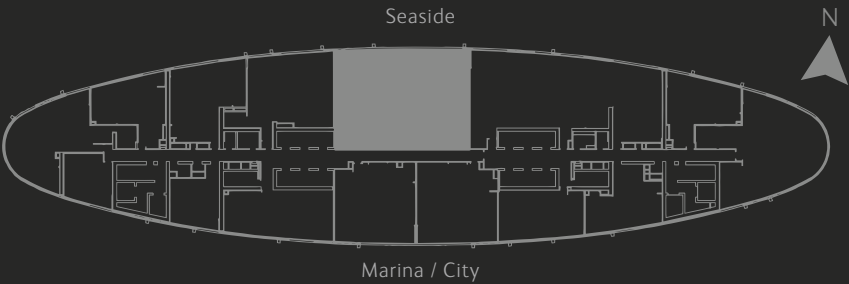
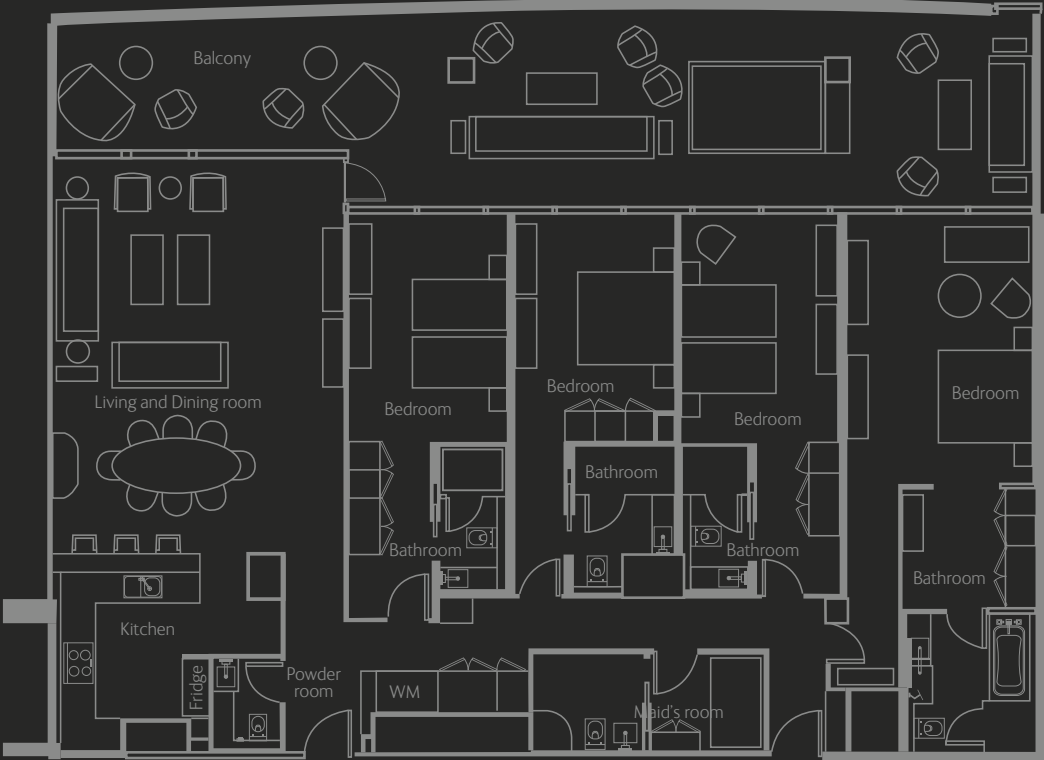
Views of the sea: Type S4B (from levels 64 to 67), S4C (from levels 68 to 72)

En-suite bathroom in every bedroom

Furnished and fitted apartments with guest room management system, touchpad switches, branded toilet accessories and fittings, and fully-equipped open kitchen

Two car parking spaces for every apartment

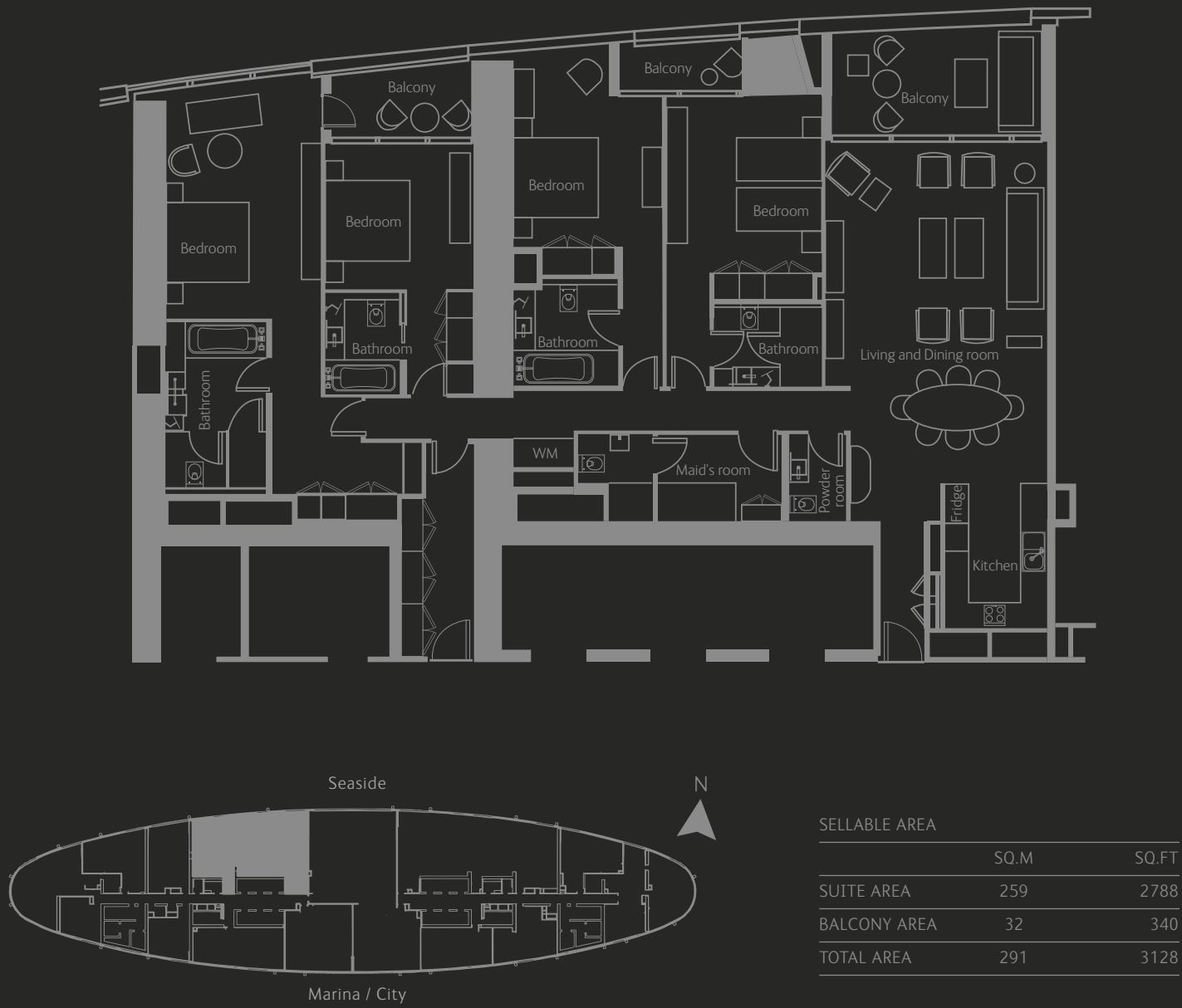
FOUR-BEDROOM SERVICED APARTMENT - TYPE S4B  
LEVELS: 64 to 67



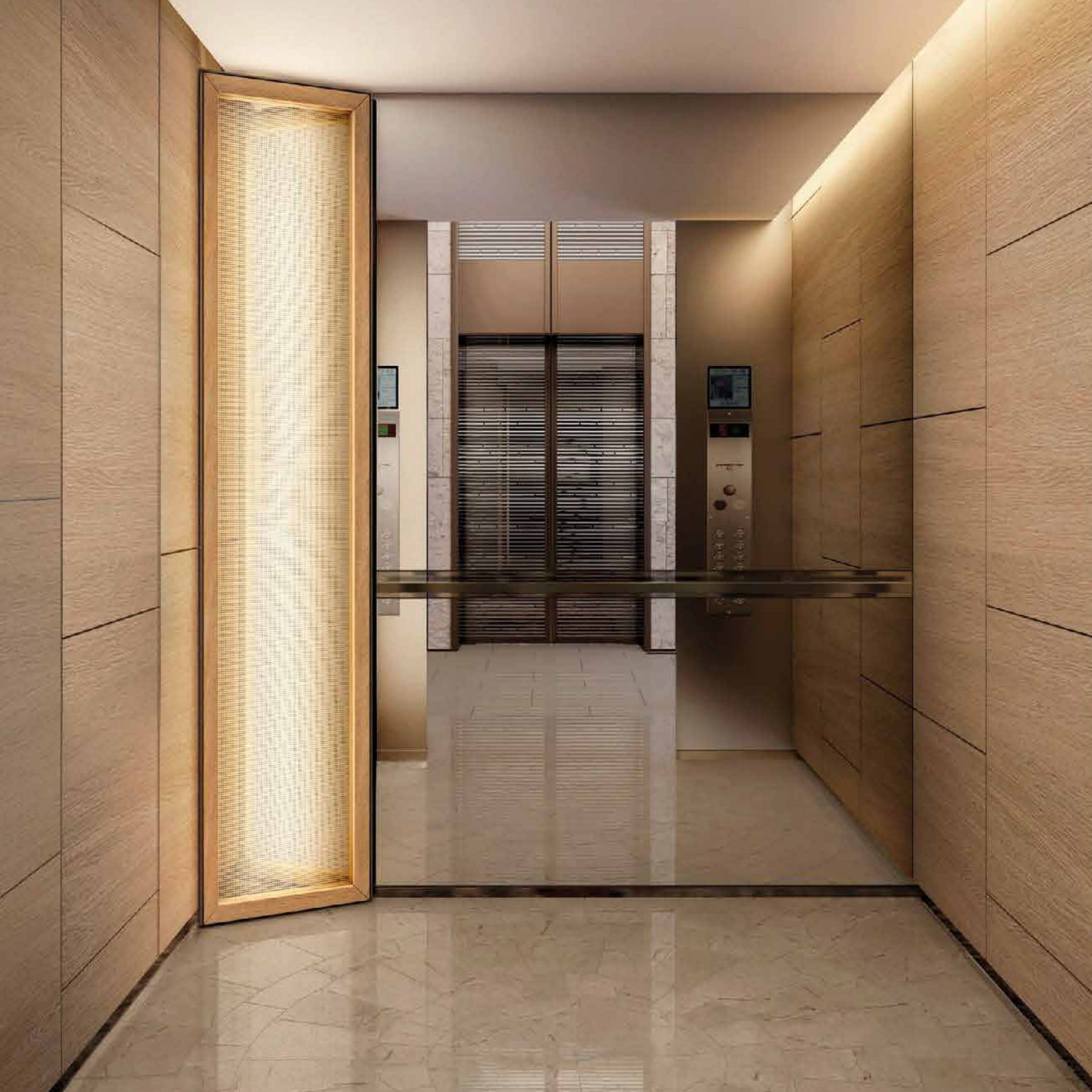
SELLABLE AREA		
	SQ.M	SQ.FT
SUITE AREA	256	2751
BALCONY AREA	83	890
TOTAL AREA	338	3641

Disclaimer: 1. All materials, dimensions and drawings are approximate. 2. Information is subject to change without notice. 3. Actual suite area may vary from the stated area. 4. Drawings not to scale. 5. The developer reserves the right to make revisions/alterations without any liability whatsoever.

FOUR-BEDROOM SERVICED APARTMENT - TYPE S4C  
LEVELS: 68 to 72



Disclaimer: 1. All materials, dimensions and drawings are approximate. 2. Information is subject to change without notice. 3. Actual suite area may vary from the stated area. 4. Drawings not to scale. 5. The developer reserves the right to make revisions/alterations without any liability whatsoever.







LIVING ROOM



BATHROOM

Five-bedroom Serviced Apartments

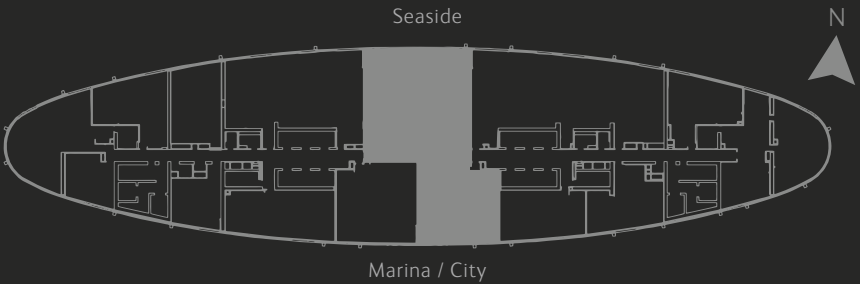
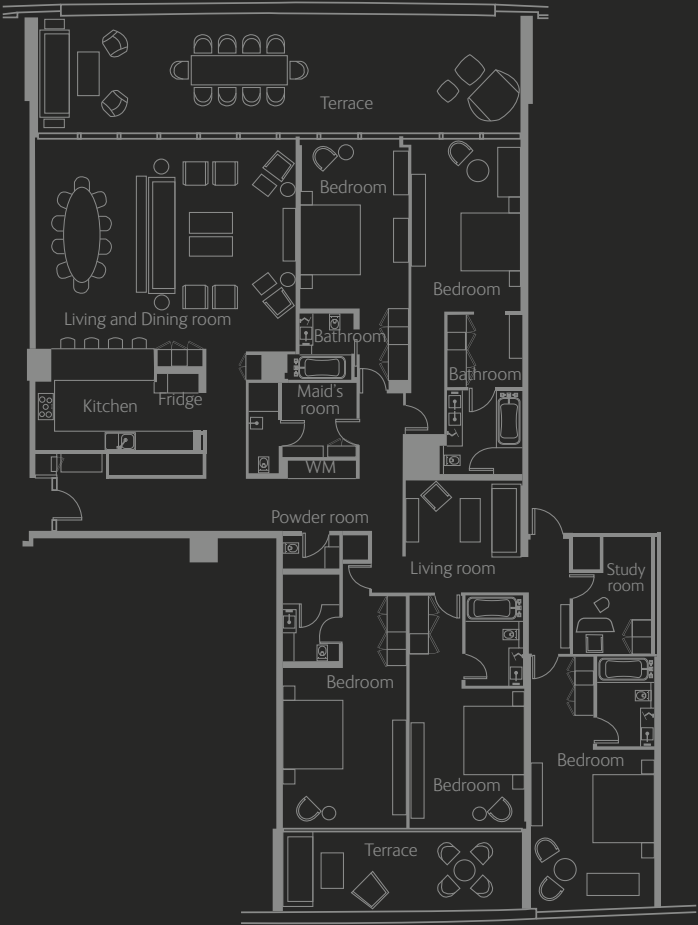
Exclusively situated on levels 68 to 72, the five-bedroom serviced apartment is the largest home at Address Residences Jumeirah Resort + Spa. The matchless abode is uniquely positioned at the centre of the bridge that connects the two towers, and covers the entire length of the level, assuring the most comprehensive views of the beach and city surroundings from a balcony on one side and an expansive terrace on the other.

Its size is lavishly evidenced across five plushly furnished bedrooms, two magnificent living rooms and an extensive hallway that essentially divides the home across the centre, directly across from the main entrance. The remarkable apartment also features a vast kitchen that overlooks the larger living room from one side, a maid's room with an attached bathroom as well as a private study.

Features

- 466sqm / 5,018sqft
- Five five-bedroom serviced apartments
- Maximum occupancy: ten adults and one child under 12 years or nine adults and two children under 12 years
- Views of the sea and marina / city: Type S5B (from levels 68 to 72)
- En-suite bathroom in every bedroom
- Furnished and fitted apartments with guest room management system, touchpad switches, branded toilet accessories and fittings, and fully-equipped open kitchen
- Two car parking spaces for every apartment

FIVE-BEDROOM SERVICED APARTMENT - TYPE S5B  
LEVELS: 68 to 72



SELLABLE AREA		
	SQ.M	SQ.FT
SUITE AREA	367	3954
BALCONY AREA	99	1064
TOTAL AREA	466	5018

Disclaimer: 1. All materials, dimensions and drawings are approximate. 2. Information is subject to change without notice. 3. Actual suite area may vary from the stated area. 4. Drawings not to scale. 5. The developer reserves the right to make revisions/alterations without any liability whatsoever.



*The Residences Jumeirah Dubai,  
Managed by Address  
478 Residential Apartments*

For connoisseurs of luxury who desire an exquisite beachfront abode at the confluence of awe-inspiring natural beauty and contemporary luxury, The Residences Jumeirah Dubai, Managed by Address, rises to the occasion with a spectacular array of 478 residences. Immerse yourself in the spirit of 'La Dolce Vita' with avant-garde interiors that reflect the brilliance of the surrounding cityscape and unfettered access to a unique variety of amenities, including direct beach access, a swimming pool located at Podium L1 and an ultramodern gymnasium located at Podium L1.

ONE-BEDROOM RESIDENCES
From 59sqm to 80sqm / 638sqft to 858sqft
TWO-BEDROOM RESIDENCES
From 107sqm to 184sqm / 1,151sqft to 1,981sqft
THREE-BEDROOM RESIDENCES
From 176sqm to 256sqm / 1,899sqft to 2,752sqft
FOUR-BEDROOM RESIDENCES
From 241sqm / 2,590sqft
FIVE-BEDROOM RESIDENCES
From 399sqm / 4,300sqft





BEDROOM



LIVING ROOM

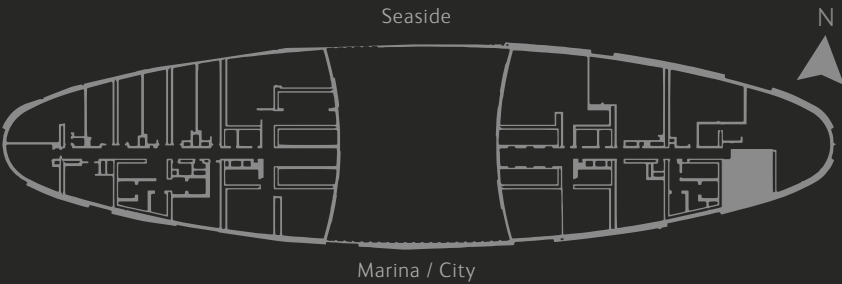
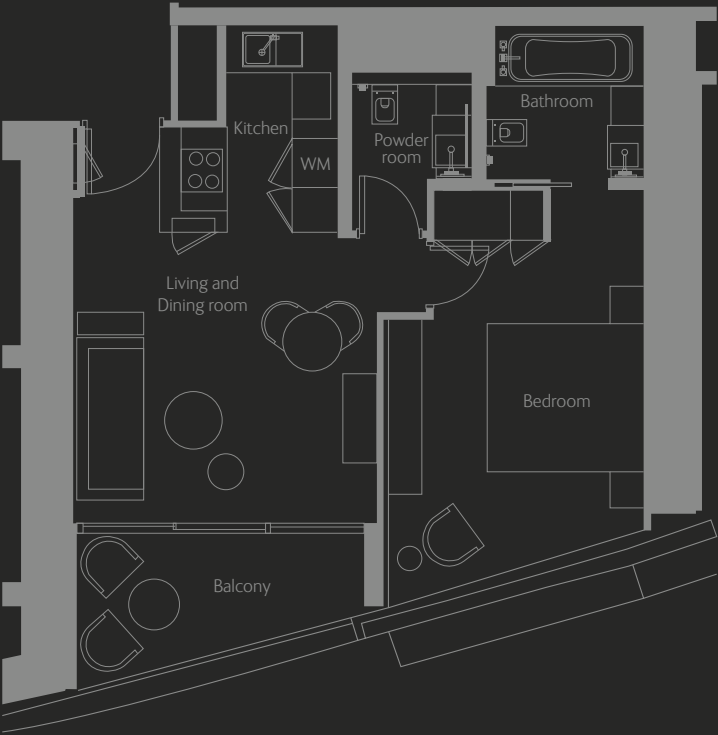
One-bedroom Residences

The one-bedroom abodes at The Residences Jumeirah Dubai, Managed by Address, present refreshingly modern perspectives on contemporary beachfront living for up to two adults and one child across six imaginative layouts. Each variant comfortably accommodates a welcoming bedroom with an attached bathroom, an elegant living room, a powder room and an open kitchen. A balcony is also included in some options.

Features

- 59sqm to 80sqm / 638sqft to 858sqft
- 152 one-bedroom residences
- Maximum occupancy: two adults and one child under 12 years
- Views of the sea (partial) and city: Type R1D (levels 13 to 16, 18 to 41)
- Views of marina / city: Types R1A, R1B, R1C, R1D (levels 3 to 8, 11 to 12), R1E
- En-suite bathroom in every bedroom
- Built-in wardrobes in every bedroom
- Kitchen cabinets with worktop complete with hood, kitchen sink, and mixer tap
- One car parking space for every residence

ONE-BEDROOM RESIDENCE - TYPE R1A  
LEVELS: 3 to 16, 18 to 41

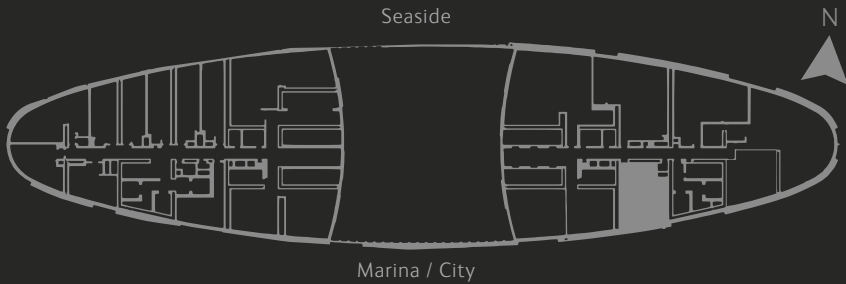


SELLABLE AREA		
	SQ.M	SQ.FT
SUITE AREA	57	615 - 616
BALCONY AREA	8	89
TOTAL AREA	65 - 66	704 - 706

Disclaimer: 1. All materials, dimensions and drawings are approximate. 2. Information is subject to change without notice. 3. Actual suite area may vary from the stated area. 4. Drawings not to scale. 5. The developer reserves the right to make revisions/alterations without any liability whatsoever. 6. Residential Apartments are sold as unfurnished apartments, without furniture, furnishings, white goods, etc.

ONE-BEDROOM RESIDENCE - TYPE R1B

LEVELS: 3 to 16, 18 to 41

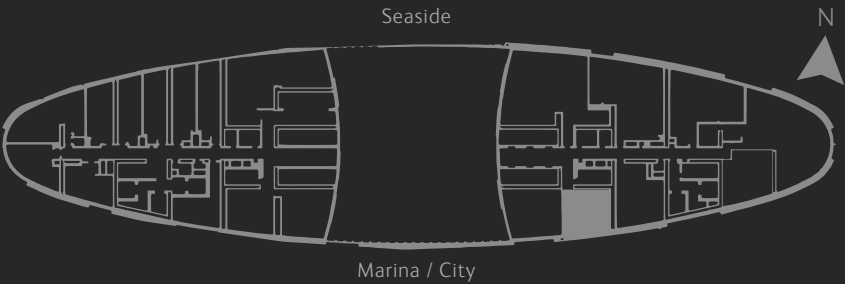


SELLABLE AREA		
	SQ.M	SQ.FT
SUITE AREA	72	776 - 777
BALCONY AREA	8	81
TOTAL AREA	80	858

Disclaimer: 1. All materials, dimensions and drawings are approximate. 2. Information is subject to change without notice. 3. Actual suite area may vary from the stated area. 4. Drawings not to scale. 5. The developer reserves the right to make revisions/alterations without any liability whatsoever. 6. Residential Apartments are sold as unfurnished apartments, without furniture, furnishings, white goods, etc.

ONE-BEDROOM RESIDENCE - TYPE R1C

LEVELS: 3 to 16, 18 to 41

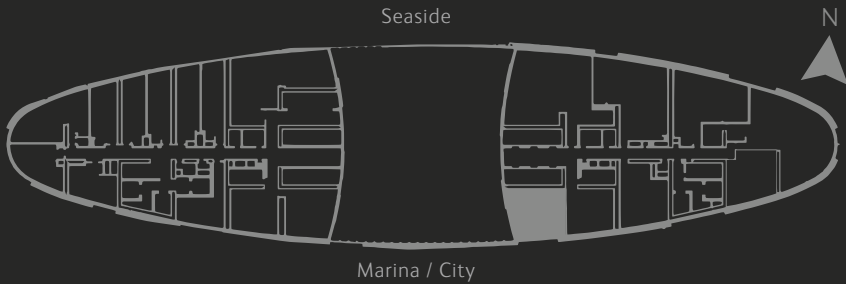
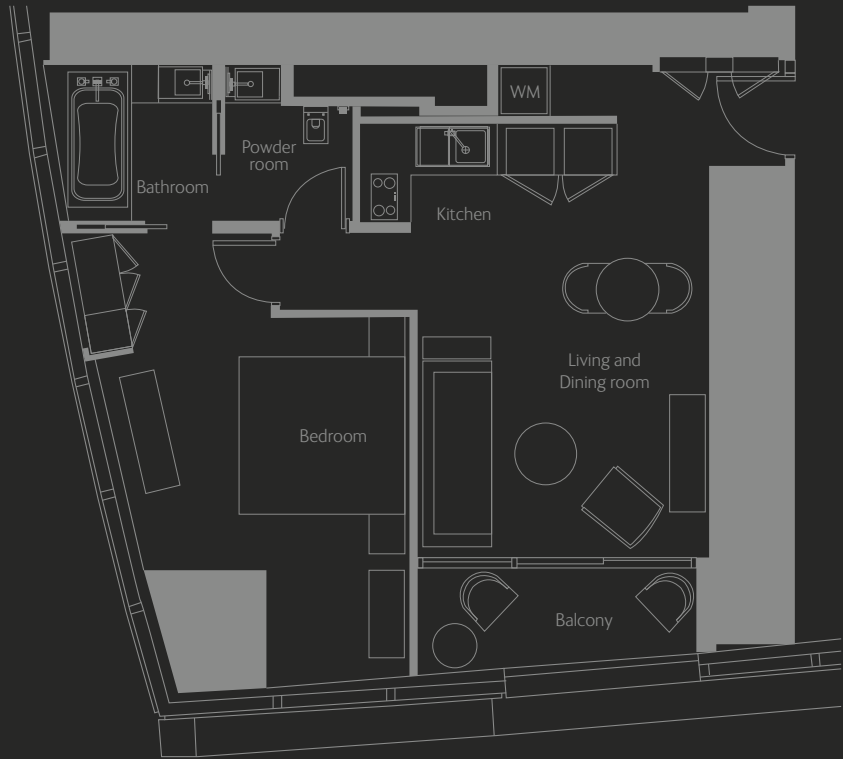


SELLABLE AREA		
	SQ.M	SQ.FT
SUITE AREA	59	638
TOTAL AREA	59	638

Disclaimer: 1. All materials, dimensions and drawings are approximate. 2. Information is subject to change without notice. 3. Actual suite area may vary from the stated area. 4. Drawings not to scale. 5. The developer reserves the right to make revisions/alterations without any liability whatsoever. 6. Residential Apartments are sold as unfurnished apartments, without furniture, furnishings, white goods, etc.



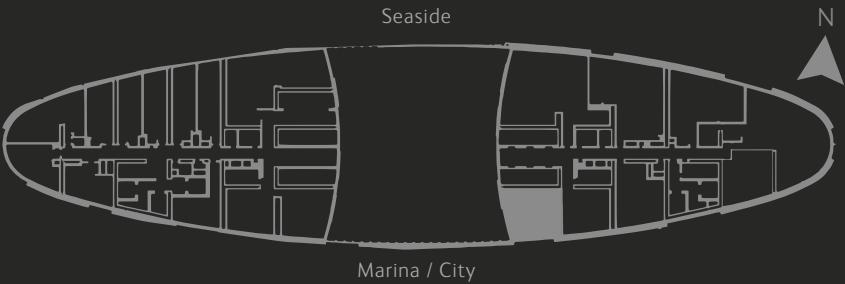
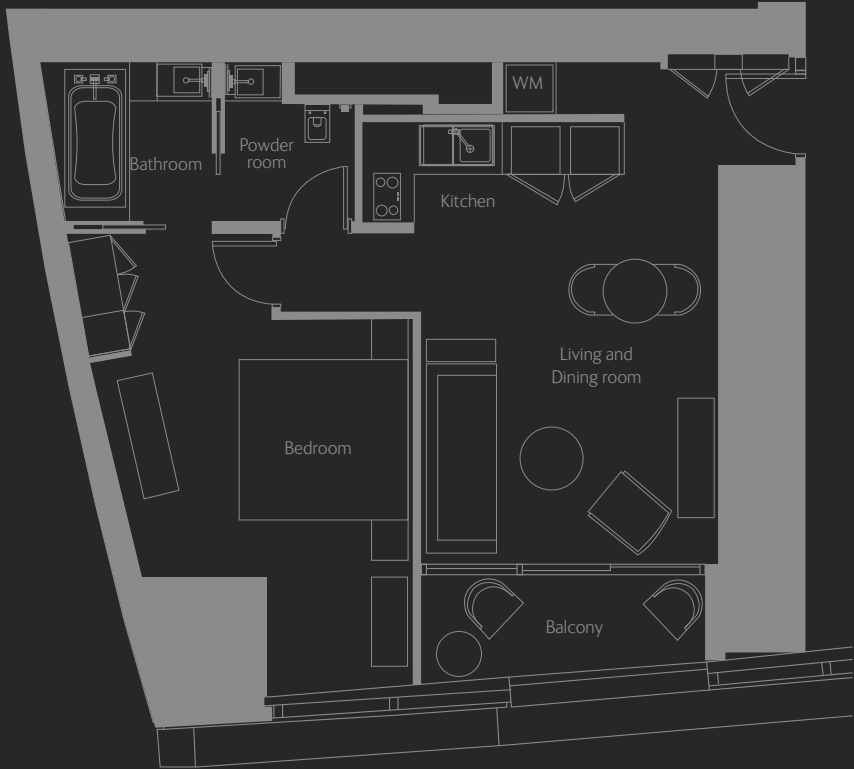
ONE-BEDROOM RESIDENCE - TYPE R1D  
LEVELS: 13 to 16, 18 to 41



SELLABLE AREA	SQ.M		SQ.FT	
SUITE AREA	62 - 65		672 - 695	
BALCONY AREA	6		68	
TOTAL AREA	69 - 71		740 - 763	

Disclaimer: 1. All materials, dimensions and drawings are approximate. 2. Information is subject to change without notice. 3. Actual suite area may vary from the stated area. 4. Drawings not to scale. 5. The developer reserves the right to make revisions/alterations without any liability whatsoever. 6. Residential Apartments are sold as unfurnished apartments, without furniture, furnishings, white goods, etc.

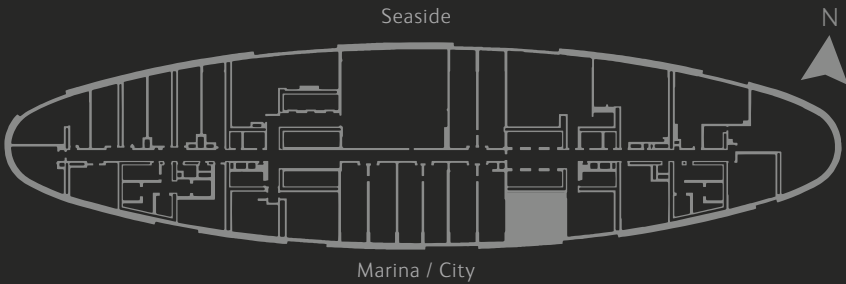
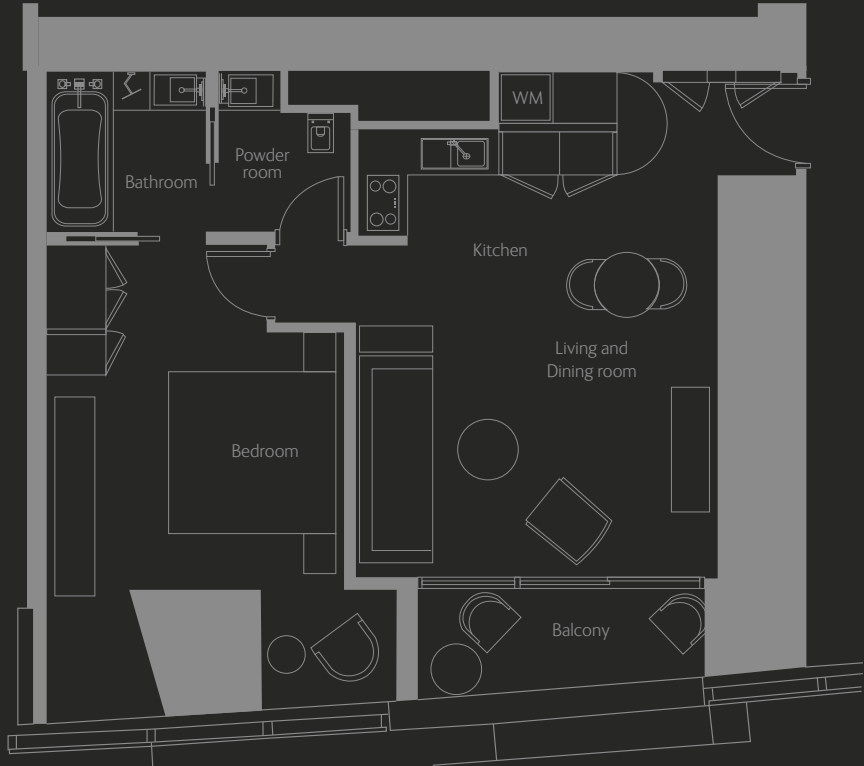
ONE-BEDROOM RESIDENCE - TYPE R1D  
LEVELS: 3 to 8, 11 to 12



SELLABLE AREA	SQ.M		SQ.FT	
SUITE AREA	62 - 65		672 - 695	
BALCONY AREA	6		68	
TOTAL AREA	69 - 71		740 - 763	

Disclaimer: 1. All materials, dimensions and drawings are approximate. 2. Information is subject to change without notice. 3. Actual suite area may vary from the stated area. 4. Drawings not to scale. 5. The developer reserves the right to make revisions/alterations without any liability whatsoever. 6. Residential Apartments are sold as unfurnished apartments, without furniture, furnishings, white goods, etc.

ONE-BEDROOM RESIDENCE - TYPE R1E  
LEVELS: 9 to 10



SELLABLE AREA		
	SQ.M	SQ.FT
SUITE AREA	69	738
BALCONY AREA	6	66
TOTAL AREA	75	804

Disclaimer: 1. All materials, dimensions and drawings are approximate. 2. Information is subject to change without notice. 3. Actual suite area may vary from the stated area. 4. Drawings not to scale. 5. The developer reserves the right to make revisions/alterations without any liability whatsoever. 6. Residential Apartments are sold as unfurnished apartments, without furniture, furnishings, white goods, etc.







LIVING ROOM



BEDROOM

Two-bedroom Residences

With a remarkable selection of seven unique layouts, families of up to four adults or two adults and two children are spoilt for choice when it comes to finding a two-bedroom residence that offers them their desired combination of advantages and amenities at The Residences Jumeirah Dubai, Managed by Address.

While each variant features two spacious bedrooms with attached bathrooms and an extensive living room, dining area and powder room, some include further benefits such as a more spacious layout for the bedrooms and communal areas.

Features

107sqm to 184sqm / 1,151sqft to 1,981sqft

201 two-bedroom residences

Maximum occupancy: four adults and one child under 12 years or three adults and two children under 12 years

Views of the sea: Type R2A (level 63), R2C, R2D, R2E

Views of the sea (partial): Type R2A (levels 3 to 8, 11 to 12), R2G

Views of marina / city: Types R2F, R2H

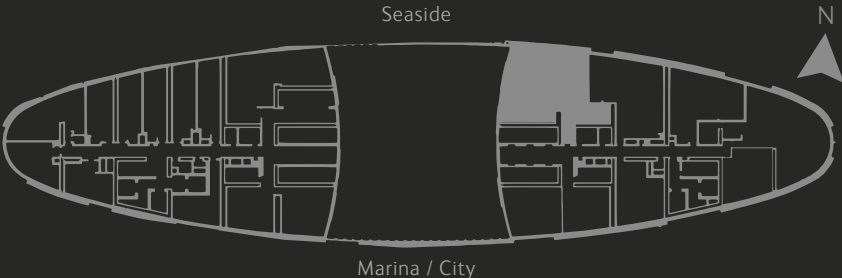
En-suite bathroom in every bedroom

Built-in wardrobes in every bedroom

Kitchen cabinets with worktop complete with hood, kitchen sink, and mixer tap

One car parking space for every residence

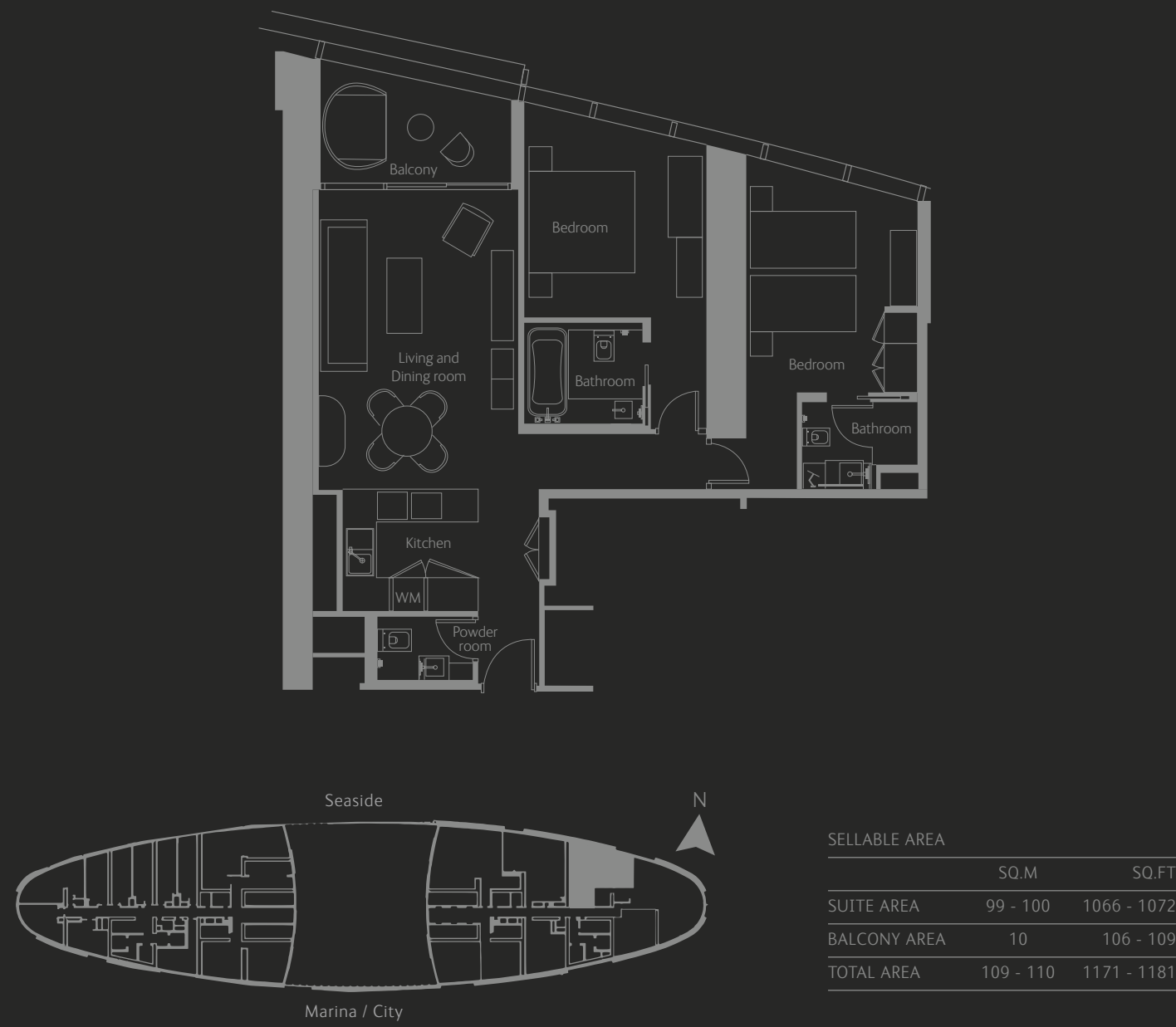
TWO-BEDROOM RESIDENCE - TYPE R2A  
LEVELS: 3 to 8, 11 to 12, 63



SELLABLE AREA		
	SQ.M	SQ.FT
SUITE AREA	160 - 163	1723 - 1759
BALCONY AREA	19 - 21	210 - 221
TOTAL AREA	180 - 184	1933 - 1981

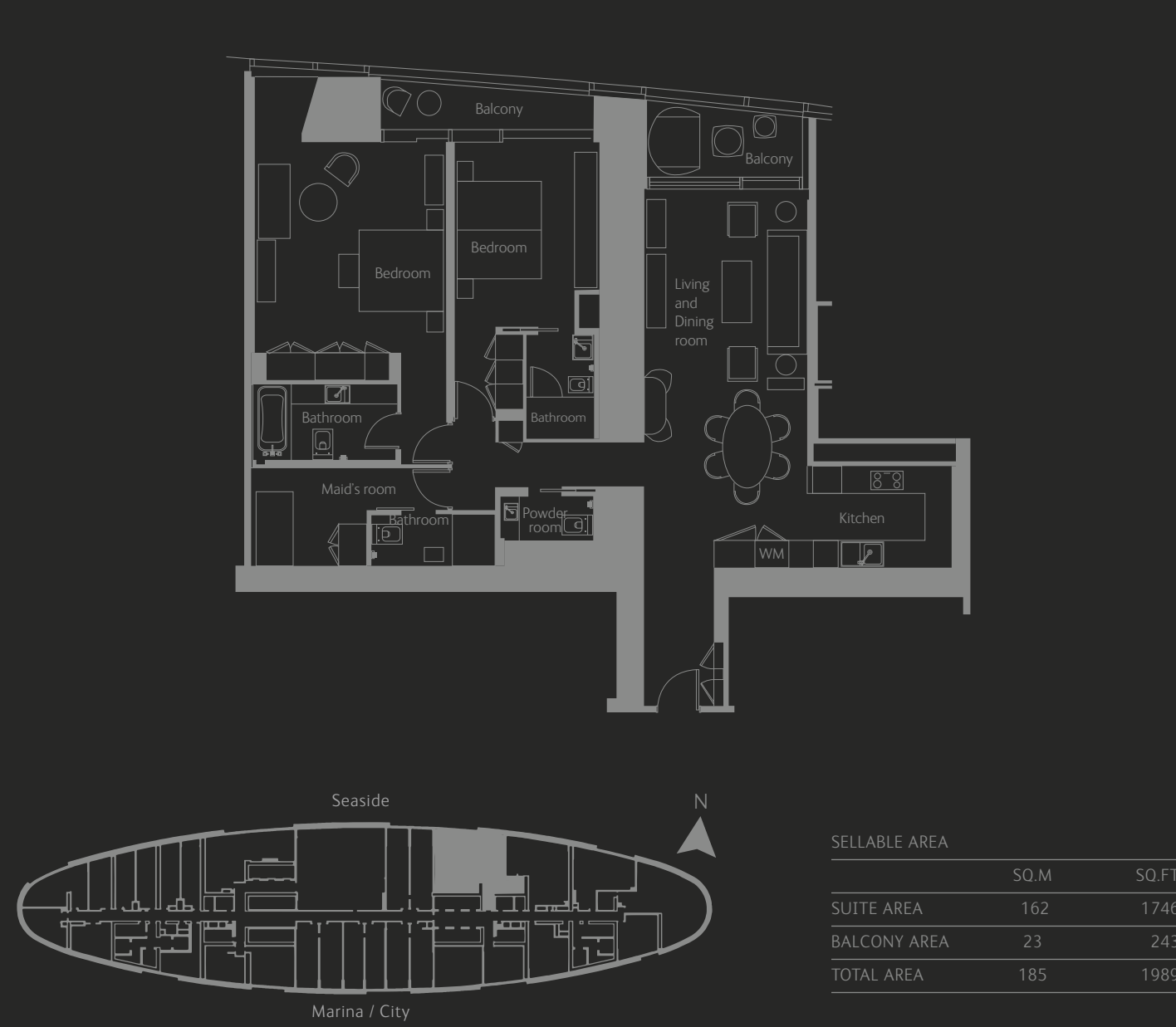
Disclaimer: 1. All materials, dimensions and drawings are approximate. 2. Information is subject to change without notice. 3. Actual suite area may vary from the stated area. 4. Drawings not to scale. 5. The developer reserves the right to make revisions/alterations without any liability whatsoever. 6. Residential Apartments are sold as unfurnished apartments, without furniture, furnishings, white goods, etc.

TWO-BEDROOM RESIDENCE - TYPE R2C  
LEVELS: 3 to 16, 18 to 41, 43 to 72



Disclaimer: 1. All materials, dimensions and drawings are approximate. 2. Information is subject to change without notice. 3. Actual suite area may vary from the stated area. 4. Drawings not to scale. 5. The developer reserves the right to make revisions/alterations without any liability whatsoever. 6. Residential Apartments are sold as unfurnished apartments, without furniture, furnishings, white goods, etc.

TWO-BEDROOM RESIDENCE - TYPE R2D  
LEVELS: 9 to 10

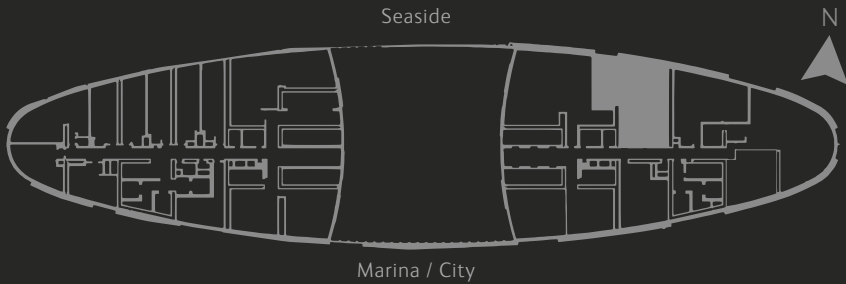
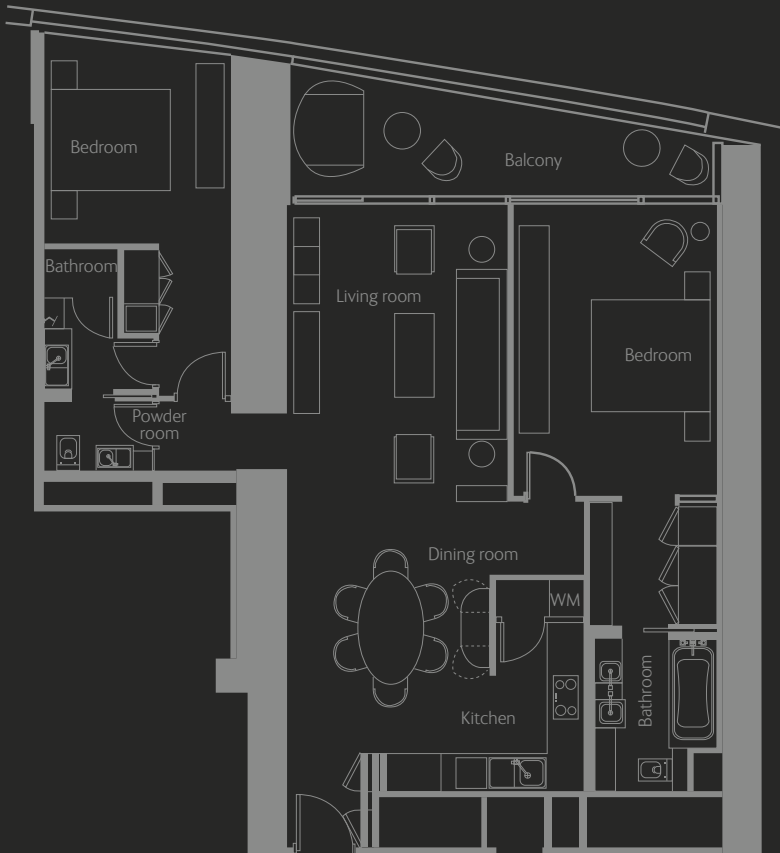


Disclaimer: 1. All materials, dimensions and drawings are approximate. 2. Information is subject to change without notice. 3. Actual suite area may vary from the stated area. 4. Drawings not to scale. 5. The developer reserves the right to make revisions/alterations without any liability whatsoever. 6. Residential Apartments are sold as unfurnished apartments, without furniture, furnishings, white goods, etc.



TWO-BEDROOM RESIDENCE - TYPE R2E

LEVELS: 3 to 16, 18 to 41, 43 to 67

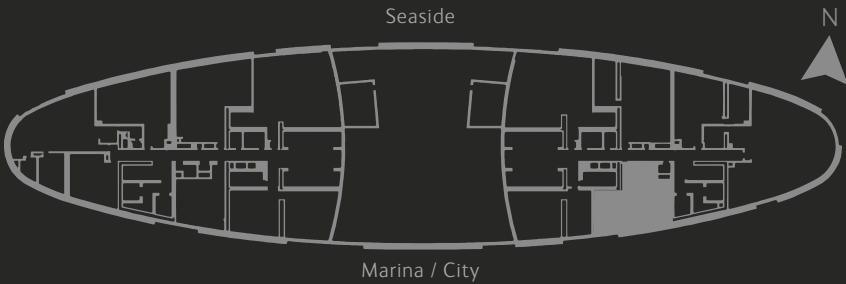
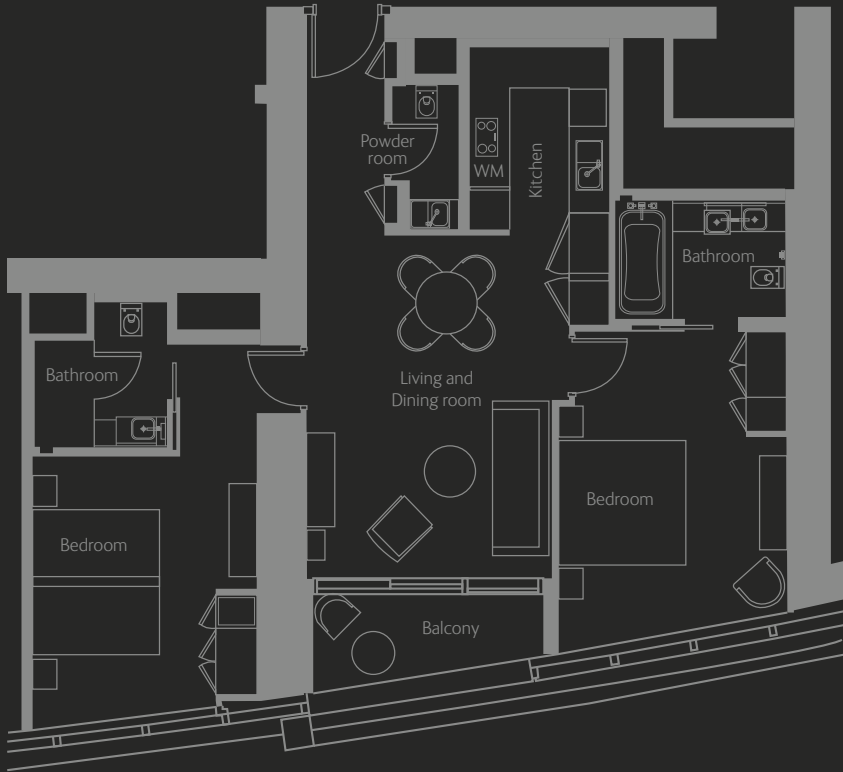


SELLABLE AREA	SQ.M		SQ.FT	
SUITE AREA	123 - 124		1320 - 1330	
BALCONY AREA	16		176 - 177	
TOTAL AREA	139 - 140		1497 - 1505	

Disclaimer: 1. All materials, dimensions and drawings are approximate. 2. Information is subject to change without notice. 3. Actual suite area may vary from the stated area. 4. Drawings not to scale. 5. The developer reserves the right to make revisions/alterations without any liability whatsoever. 6. Residential Apartments are sold as unfurnished apartments, without furniture, furnishings, white goods, etc.

TWO-BEDROOM RESIDENCE - TYPE R2F

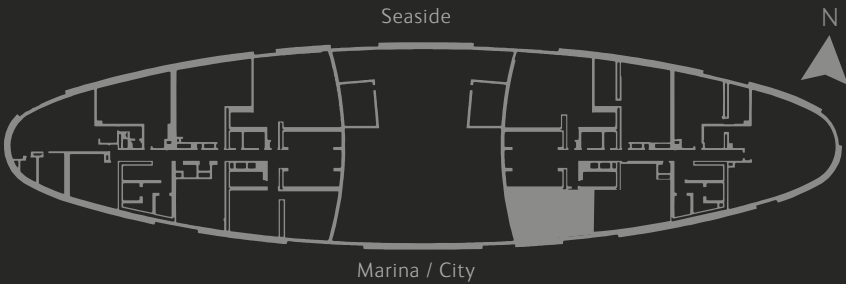
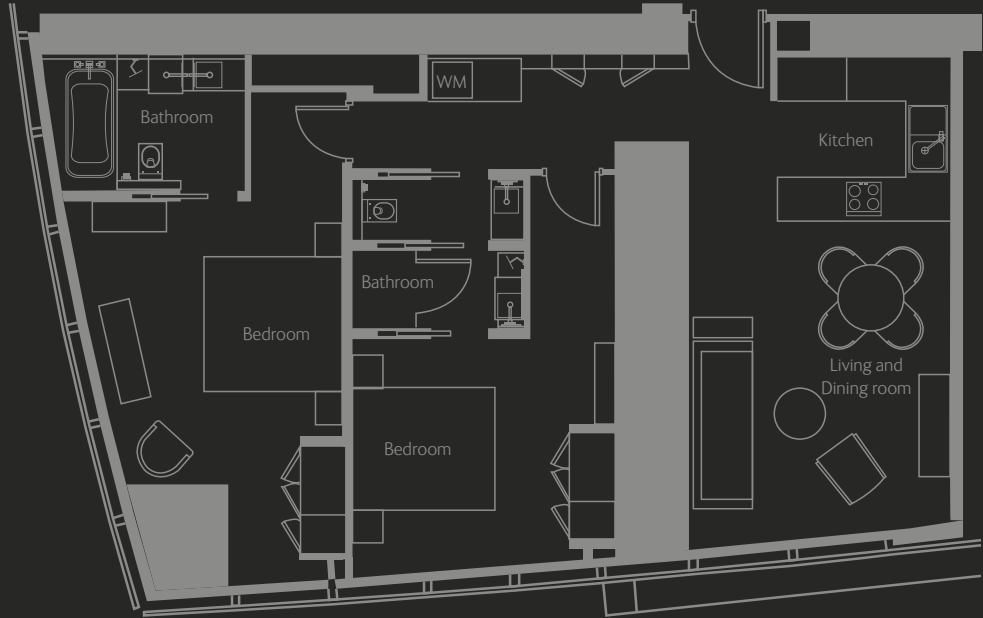
LEVELS: 43 to 72



SELLABLE AREA	SQ.M		SQ.FT	
SUITE AREA	100 - 101		1081 - 1090	
BALCONY AREA	7		79	
TOTAL AREA	108 - 109		1160 - 1169	

Disclaimer: 1. All materials, dimensions and drawings are approximate. 2. Information is subject to change without notice. 3. Actual suite area may vary from the stated area. 4. Drawings not to scale. 5. The developer reserves the right to make revisions/alterations without any liability whatsoever. 6. Residential Apartments are sold as unfurnished apartments, without furniture, furnishings, white goods, etc.

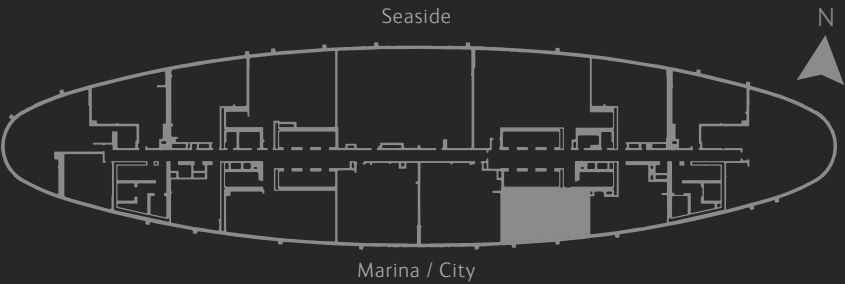
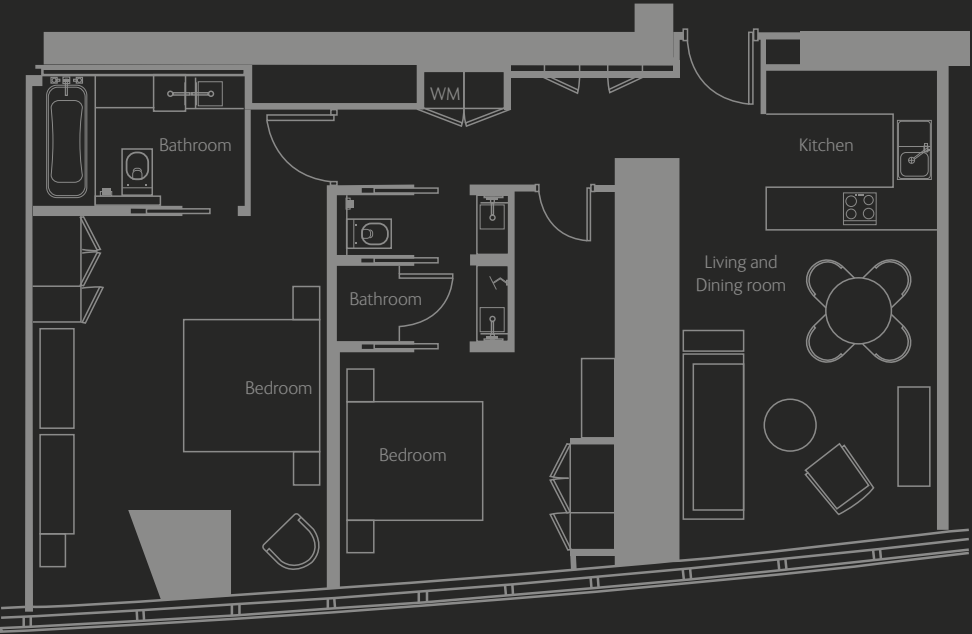
TWO-BEDROOM RESIDENCE - TYPE R2G  
LEVELS: 43 to 62



SELLABLE AREA	SQ.M		SQ.FT	
SUITE AREA	108 - 107		1159 - 1152	
TOTAL AREA	108 - 107		1159 - 1152	

Disclaimer: 1. All materials, dimensions and drawings are approximate. 2. Information is subject to change without notice. 3. Actual suite area may vary from the stated area. 4. Drawings not to scale. 5. The developer reserves the right to make revisions/alterations without any liability whatsoever. 6. Residential Apartments are sold as unfurnished apartments, without furniture, furnishings, white goods, etc.

TWO-BEDROOM RESIDENCE - TYPE R2H  
LEVELS: 64 to 72



SELLABLE AREA	SQ.M		SQ.FT	
SUITE AREA	113		1218	
TOTAL AREA	113		1218	

Disclaimer: 1. All materials, dimensions and drawings are approximate. 2. Information is subject to change without notice. 3. Actual suite area may vary from the stated area. 4. Drawings not to scale. 5. The developer reserves the right to make revisions/alterations without any liability whatsoever. 6. Residential Apartments are sold as unfurnished apartments, without furniture, furnishings, white goods, etc.





BEDROOM



LIVING ROOM

### Three-bedroom Residences

Each of the three splendid designs of the three-bedroom residences offers distinct advantages that assure a superior standard of living for families of up to eight individuals. The smaller variants are distinguished by their ingenious design, which optimises space and privacy in every room while uplifting the joy and intimacy of shared living.

The largest of the three options (Type R3C) capitalises on its generous area with the inclusion of three balconies, a private study and a large living room.

### Features

176sqm to 256sqm / 1,899sqft to 2,752sqft

90 three-bedroom residences

Maximum occupancy: six adults and one child under 12 years or five adults and two children under 12 years

Views of the sea and city: Type R3A, R3B

Views of the city: Type R3C

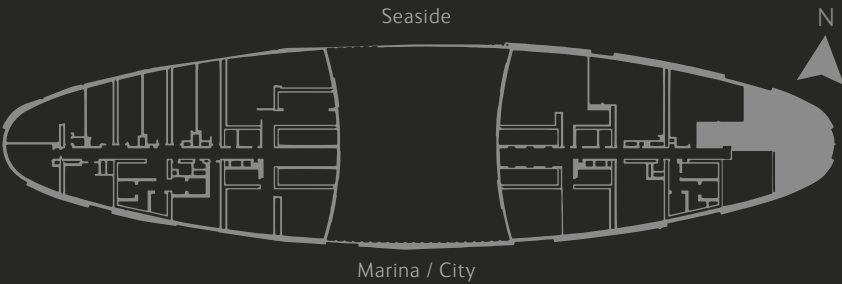
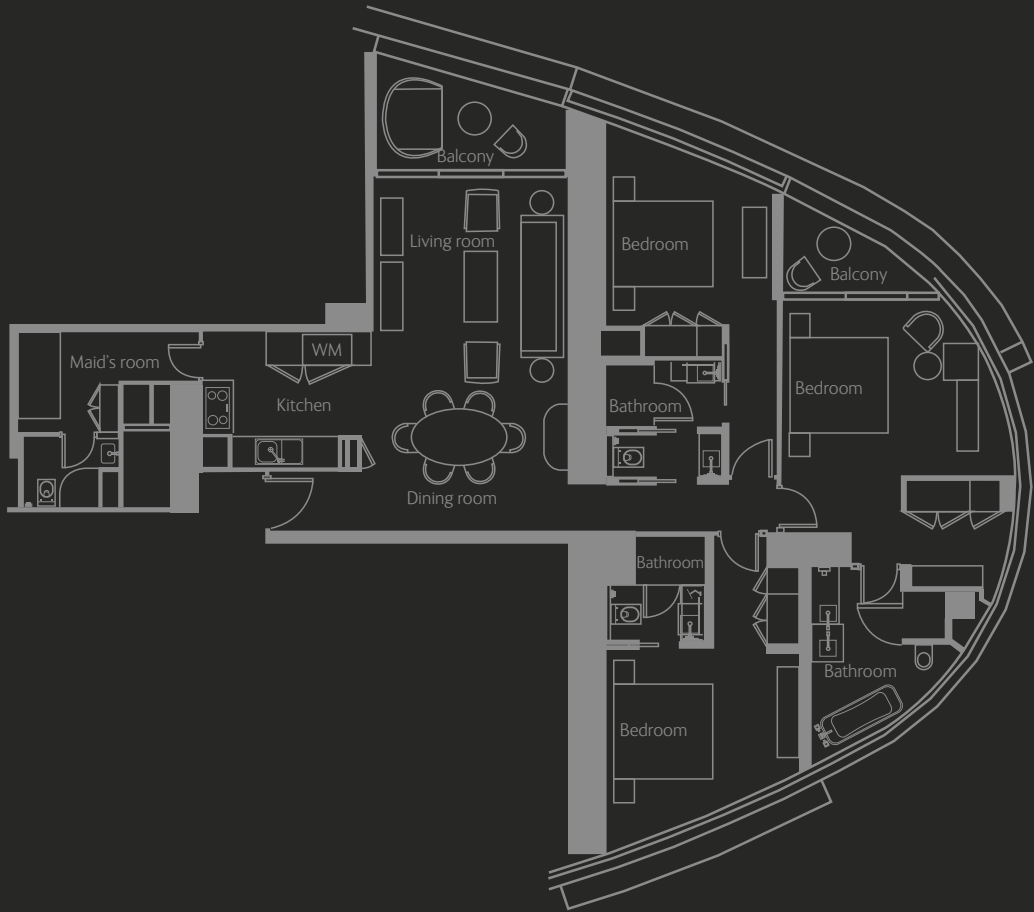
En-suite bathroom in every bedroom

Built-in wardrobes in every bedroom

Kitchen cabinets with worktop complete with hood, kitchen sink, and mixer tap

Two car parking spaces for every residence

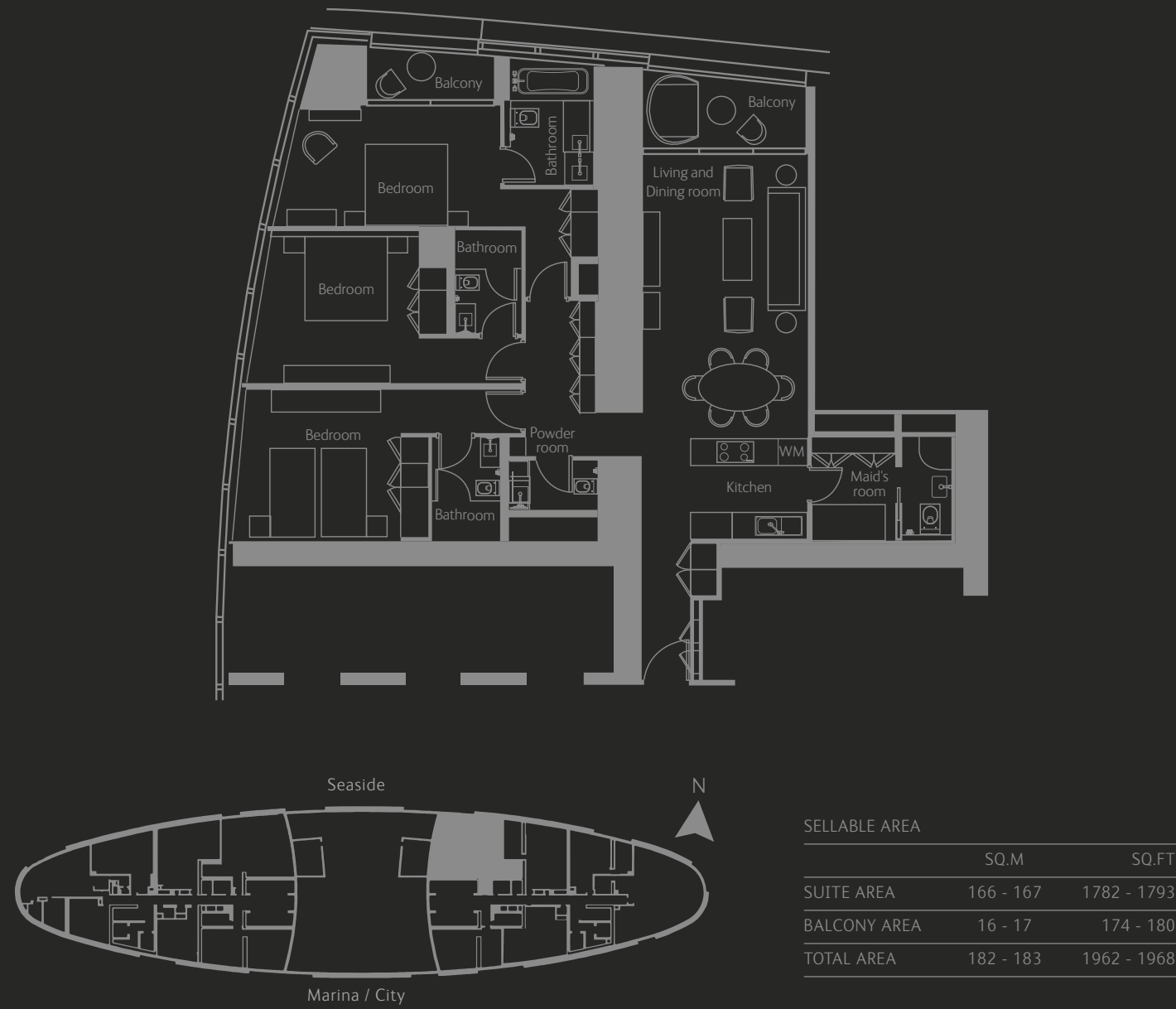
THREE-BEDROOM RESIDENCE - TYPE R3A  
LEVELS: 3 to 16, 18 to 41



SELLABLE AREA		
	SQ.M	SQ.FT
SUITE AREA	162	1746
BALCONY AREA	14	151 -152
TOTAL AREA	176	1897 - 1899

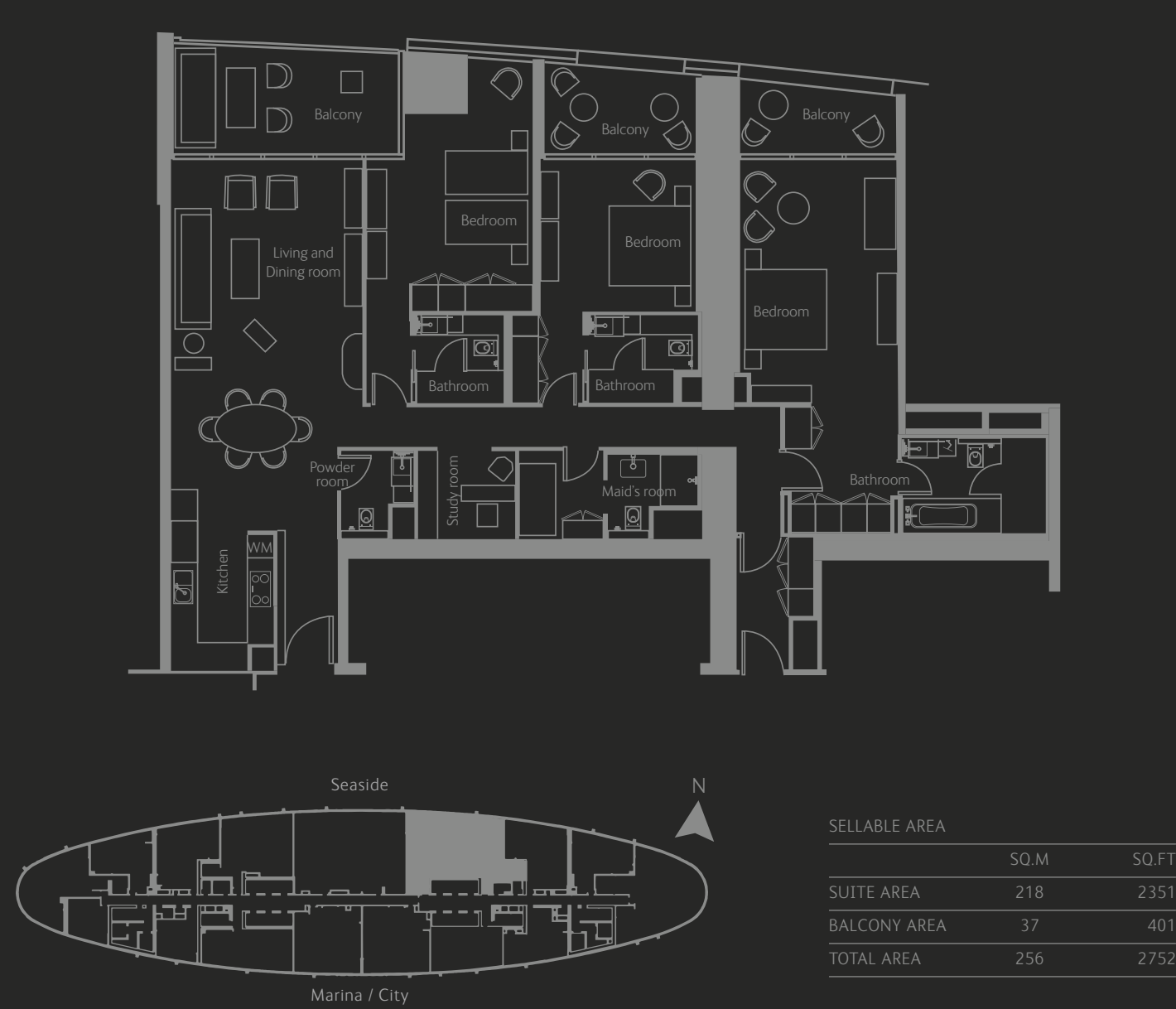
Disclaimer: 1. All materials, dimensions and drawings are approximate. 2. Information is subject to change without notice. 3. Actual suite area may vary from the stated area. 4. Drawings not to scale. 5. The developer reserves the right to make revisions/alterations without any liability whatsoever. 6. Residential Apartments are sold as unfurnished apartments, without furniture, furnishings, white goods, etc.

THREE-BEDROOM RESIDENCE - TYPE R3B  
LEVELS: 13 to 16, 18 to 41, 43 to 62



Disclaimer: 1. All materials, dimensions and drawings are approximate. 2. Information is subject to change without notice. 3. Actual suite area may vary from the stated area. 4. Drawings not to scale. 5. The developer reserves the right to make revisions/alterations without any liability whatsoever. 6. Residential Apartments are sold as unfurnished apartments, without furniture, furnishings, white goods, etc.

THREE-BEDROOM RESIDENCE - TYPE R3C  
LEVELS: 64 to 67



Disclaimer: 1. All materials, dimensions and drawings are approximate. 2. Information is subject to change without notice. 3. Actual suite area may vary from the stated area. 4. Drawings not to scale. 5. The developer reserves the right to make revisions/alterations without any liability whatsoever. 6. Residential Apartments are sold as unfurnished apartments, without furniture, furnishings, white goods, etc.





BEDROOM



BATHROOM

### Four-bedroom Residences

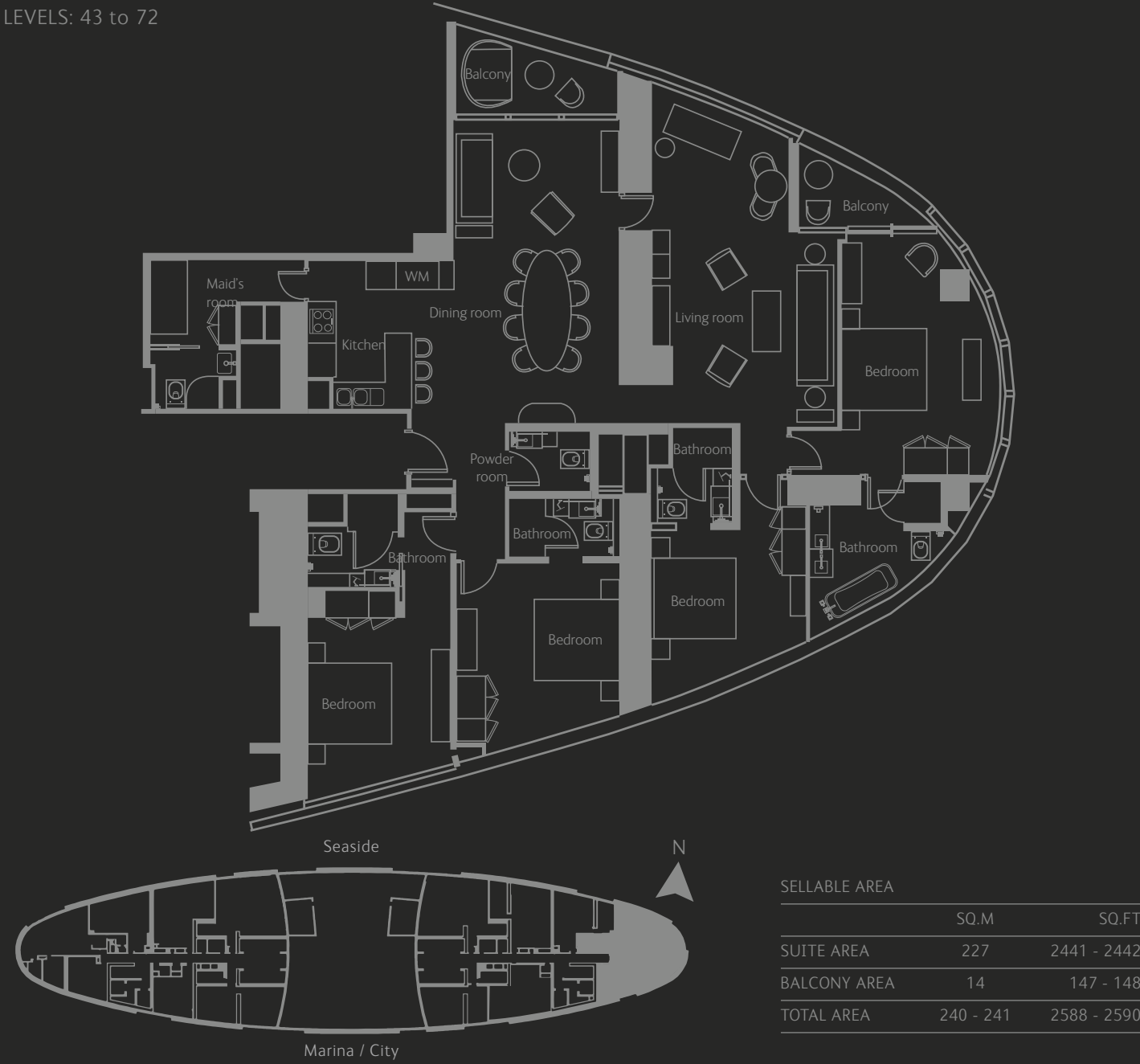
Attractively situated at the rim of the tower, the four-bedroom residence makes the most of the brilliant skyscraper’s spherical structure with its delightfully intuitive design and almost 360-degree perspectives of the beach and Dubai cityscape. The capacious abode features a separate living room and dining area, which conveniently connects to a modern open kitchen and the maid’s room.

The communal areas are centrally located near the main entrance, and are easily accessible from every bedroom. Floor-to-ceiling windows encapsulate the residence and ensure an abundance of natural light in every space, while two immaculate balconies offer the opportunity to step out and enjoy the soothing coastal breeze in an elegant alfresco environment.

### Features

- 241sqm / 2,590sqft
- 30 four-bedroom residences
- Maximum occupancy: eight adults and one child under 12 years or seven adults and two children under 12 years
- Views of the sea and city: Type R4A (levels 43 to 72)
- En-suite bathroom in every bedroom
- Built-in wardrobes in every bedroom
- Kitchen cabinets with worktop complete with hood, kitchen sink, and mixer tap
- Two car parking spaces for every residence

### FOUR-BEDROOM RESIDENCE - TYPE R4A LEVELS: 43 to 72



Disclaimer: 1. All materials, dimensions and drawings are approximate. 2. Information is subject to change without notice. 3. Actual suite area may vary from the stated area. 4. Drawings not to scale. 5. The developer reserves the right to make revisions/alterations without any liability whatsoever. 6. Residential Apartments are sold as unfurnished apartments, without furniture, furnishings, white goods, etc.



LIVING ROOM



BEDROOM

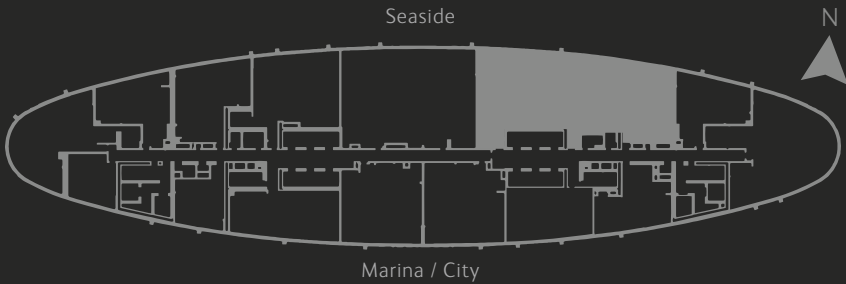
Five-bedroom Residences

Outstanding in terms of both size and aesthetics, the five-bedroom residences occupy pride of place from levels 68 to 72 of The Residences Jumeirah Dubai, Managed by Address. The one-of-a-kind allure of this magnificent home is amply reflected by its many unique facets which include, but are not limited to, the presence of four vast balconies, the striking spaciousness of its living and dining room and an extended kitchen that features a closed area as well as an open area with attached seating.

Features

- 399sqm / 4,300sqft
- Five five-bedroom residences
- Maximum occupancy: ten adults and one child under 12 years or nine adults and two children under 12 years
- Views of the sea: Type R5A (levels 68 to 72)
- En-suite bathroom in every bedroom
- Built-in wardrobes in every bedroom
- Kitchen cabinets with worktop complete with hood, kitchen sink, and mixer tap
- Two car parking spaces for every residence

FIVE-BEDROOM RESIDENCE - TYPE R5A  
LEVELS: 68 to 72



SELLABLE AREA		
	SQ.M	SQ.FT
SUITE AREA	354	3810
BALCONY AREA	45	489
TOTAL AREA	399	4300

Disclaimer: 1. All materials, dimensions and drawings are approximate. 2. Information is subject to change without notice. 3. Actual suite area may vary from the stated area. 4. Drawings not to scale. 5. The developer reserves the right to make revisions/alterations without any liability whatsoever. 6. Residential Apartments are sold as unfurnished apartments, without furniture, furnishings, white goods, etc.



# Betterhomes.

Rated 'Excellent' on ★ Trustpilot



## **Head Office**

Vision Tower 42nd floor, Business Bay, Dubai

## **Dubai Marina Office**

Marina Plaza, office 1901, Dubai Marina, Dubai

## **Motor City Office**

Control Tower, office 2101, Motor City, Dubai

## **Abu Dhabi Office**

Block D1, Al Zeina, Al Raha Beach, Abu Dhabi

T. +971 4 409 0998 | E. [offplan@bhomes.com](mailto:offplan@bhomes.com)

**[bhomes.com](https://bhomes.com)**